

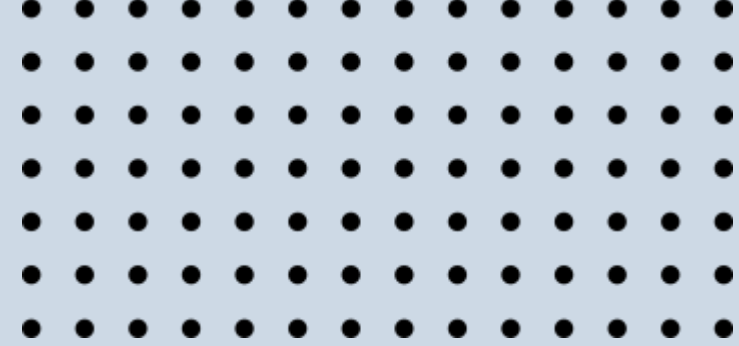


成心科技

SUCCESSFUL HEART TECHNOLOGY

1





成心科技

SUCCESSFUL HEART TECHNOLOGY

負責人：金相勳 / 邱國威

設立日期：2009.11

資本額：NTD 100,000,000

半導體/面板- 代理產品/維修/設備機台買賣,改善

員工人數：136位

台灣總部：35059 苗栗縣竹南鎮公義里群義路38號

韓國總部：901-9F, 253, Pangyo-ro, Bundang-gu, Seongnam-si, Gyeonggi-do,

Republic of Korea

新加坡總部：1 YISHUN INDUSTRIAL STREET1# 04-19 A'POSH BIZHUB SINGAPORE

(768160)

大陸總部：廣東省東莞市常平鎮星匯中心1006號

日本總部：千葉縣柏市南柏2 - 6 - 18

越南總部：Floor 3, B3-11 Vinhomes Gardenia, Ham Nghi, Cau Dien ward, Nam Tu

Liem district, hanoi

COMPANY HISTORY



2009

- GCT 設立 Repair center



2010

- SHT 設立



2011

- SHT Korea 設立
- CMO/AUO Vender code
- UMC/Micron/
Winbond Vender code



2012-2013

- Jiufeng 設立
- AKT OEM
Vender code



2014-2015

- SHT 公司搬遷
- MECHARONICS SZ 設立
- CSOT/TIANMA Vender code
- GCT ISO 9001/14001 認證
- UMC 12X/TLURY/ APPLE
Vender code



2018-2019

- TSMC Vender code
- GCT Chiller Repair
部門設立
- Vietnam Office 設立
- CXMT/JHICC Vender
code
- HKC Vender code



2020

- Water treatment
engineering 設立
- USCXM Vender
code



2021

- Xiamen Office 設立
Repair center
- MECHARONICS SZ 搬
遷
- SHT ISO 9001 認證
- GCITCXM ISO
9001/14001 認證



2022

- SHT Turbo & Cryo
PUMP Repair center
- NanJing Office 設立
- TSMC南京/YMTC
/CHOT Vender code





2024-Now

- Singapore Office 設立
- Japan Office 設立

LOCATION



TAIWAN

-  Zhunan Headquarters & Repair Center
-  Tainan Office & Chiller Repair Center

KOREA

-  Korea office

SINGAPORE

-  Singapore office

CHINA

-  Shenzhen Office
-  Xiamen Office & Repair Center
-  NanJing Office & Repair Center
-  ChongQing Office

JAPAN

-  Japan office

VIET NAM

-  Hanoi office

HEADQUARTERS



Singapore Office & Repair Center



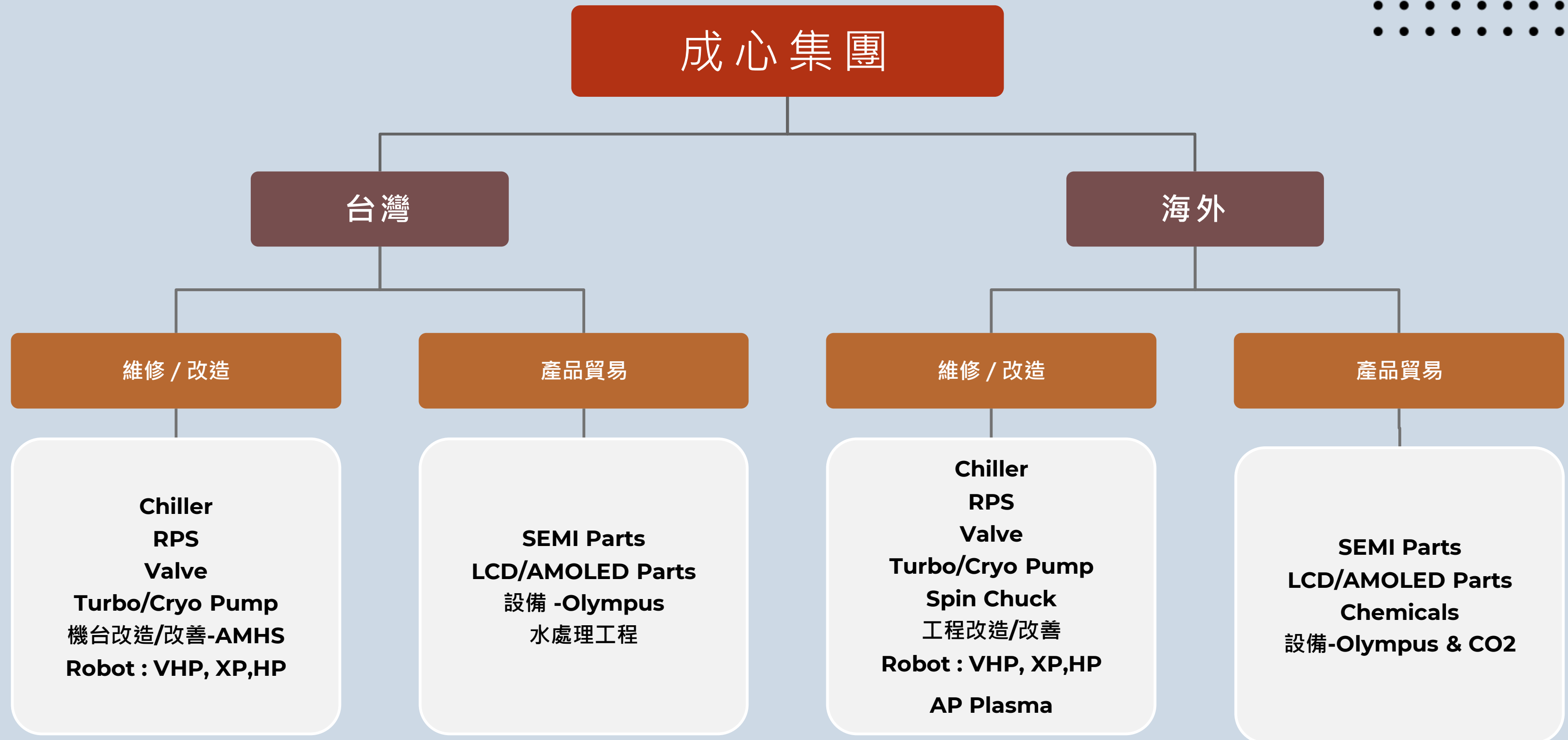
Xiamen & Nan Jing Office & Repair Center



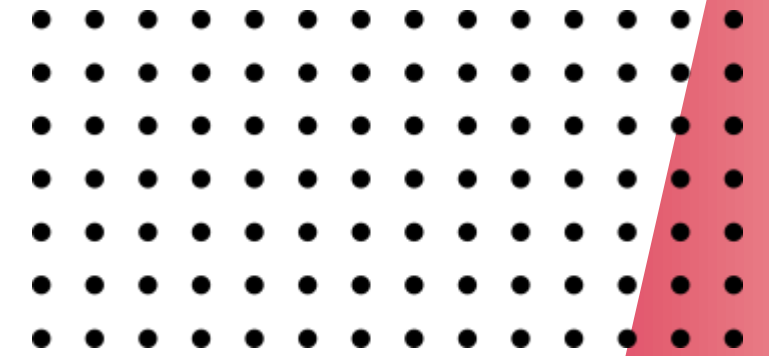
Vietnam Office



Product applications



SEMI Parts -AIN Heater



12" AMAT Producer
AIN heater

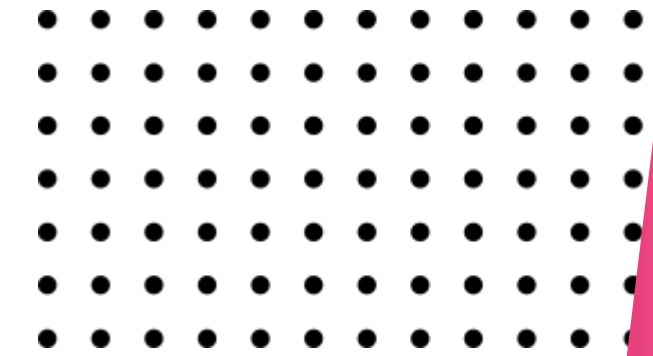


8" AMAT Producer
AIN heater



8" AMAT Centura
AIN heater

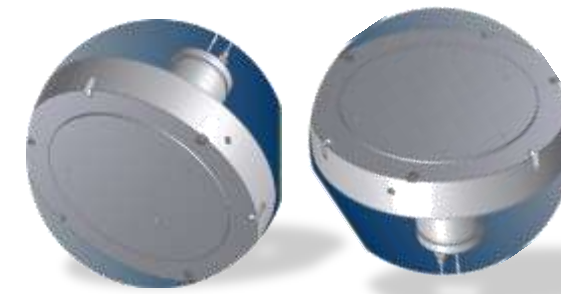
SEMI Parts -Al Heater



Pedestal 12"



CVD Heater 12"



Vector
Heater 12" AIF extreme



Pedestal 8"



Pedestal 12" ATM

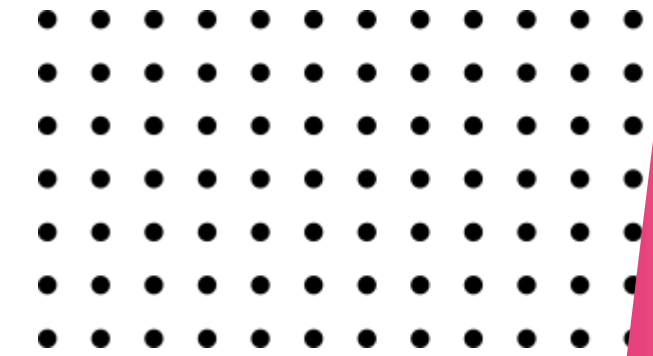


Vector
Heater 12" Normal
(AIF Coating Type)

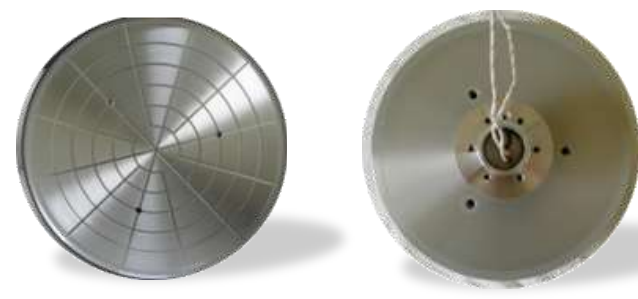


12" AMAT ENDURA MCA Heater
(0040-91179 / 2nd new/SUS Heater)

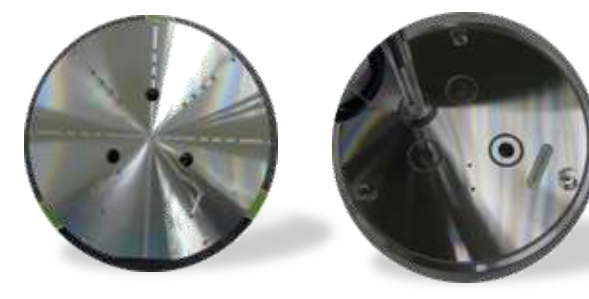
SEMI Parts -Al Heater



FORGED DXZ 8"



DAS 2000



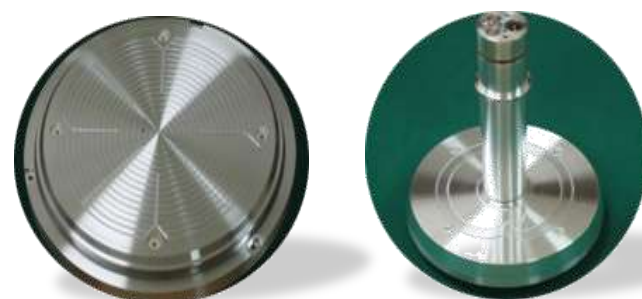
GASONIC 8"



8" WXZ



PLUS TXZ 8"

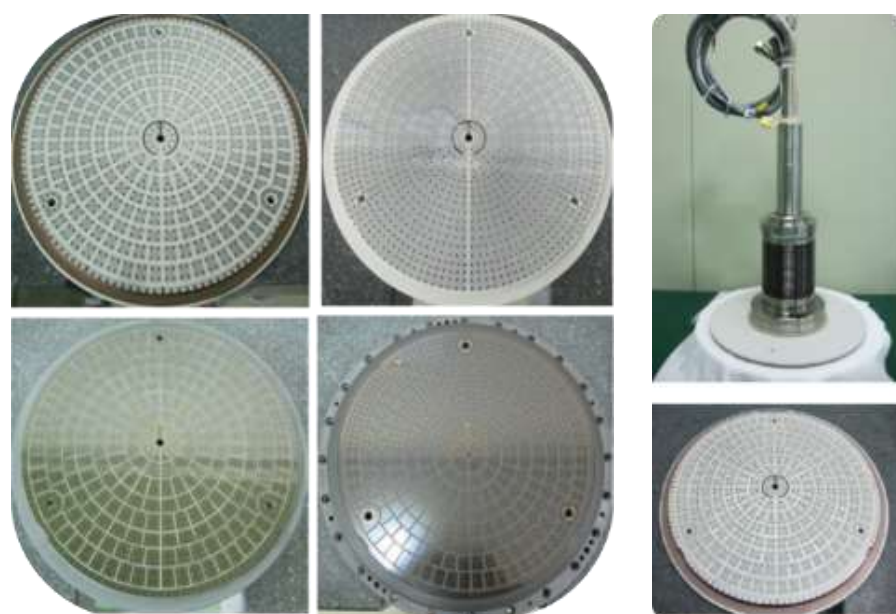
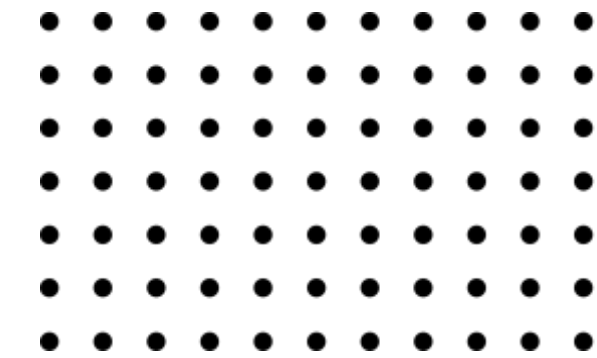


CPR 8"



ATTO 8" 12"

SEMI Parts - 8" & 12" ESC



12" AMAT MCA High & Low Temp ESC(Repair)



12" LAM Al2O3 Plate type



12" AMAT DPS



12" TEL RK&LK & NV

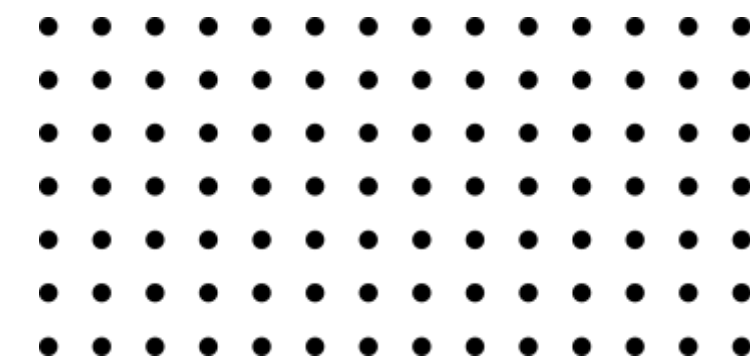


12" AMAT Producer



12" AMAT E-MAX

SEMI Parts- Quartz & Silicon & SIC



12" & 8" Quartz parts



12" & 8" Si Cathode & Ring



CVD SiC ring



Focus ring

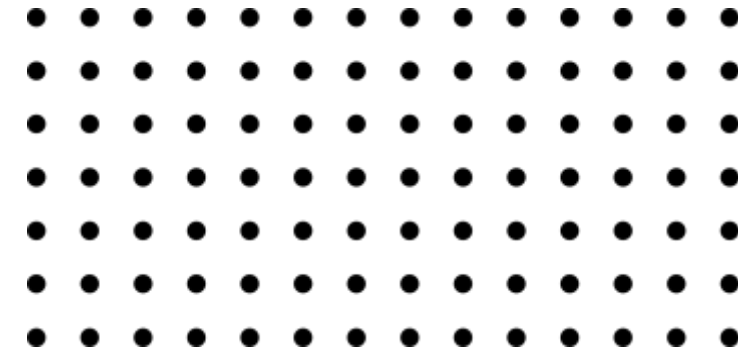


Outer cel

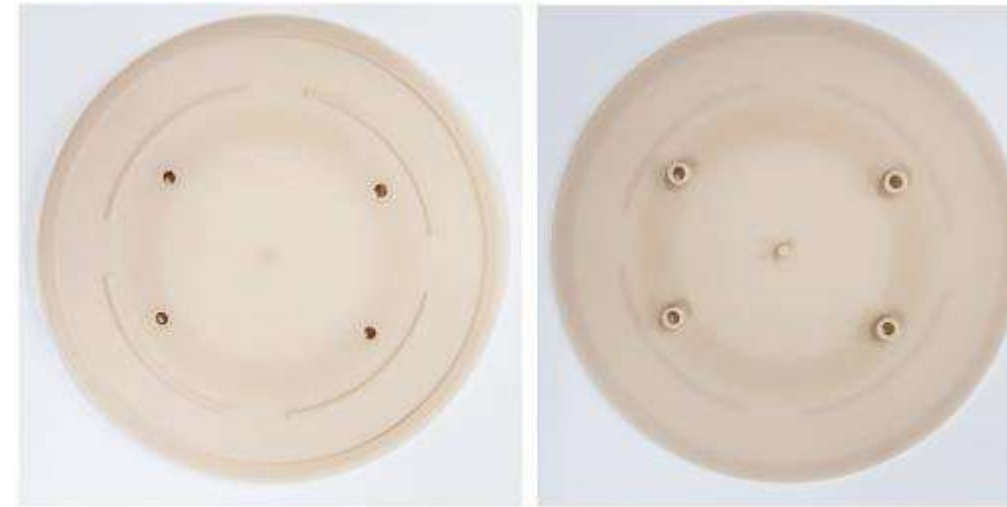
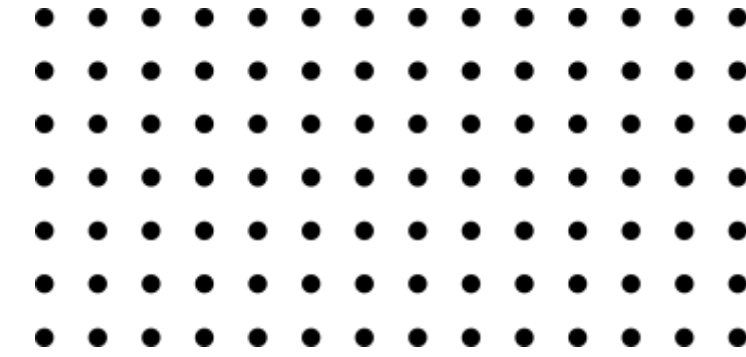


Inner cel

SEMI Parts- Ceramic



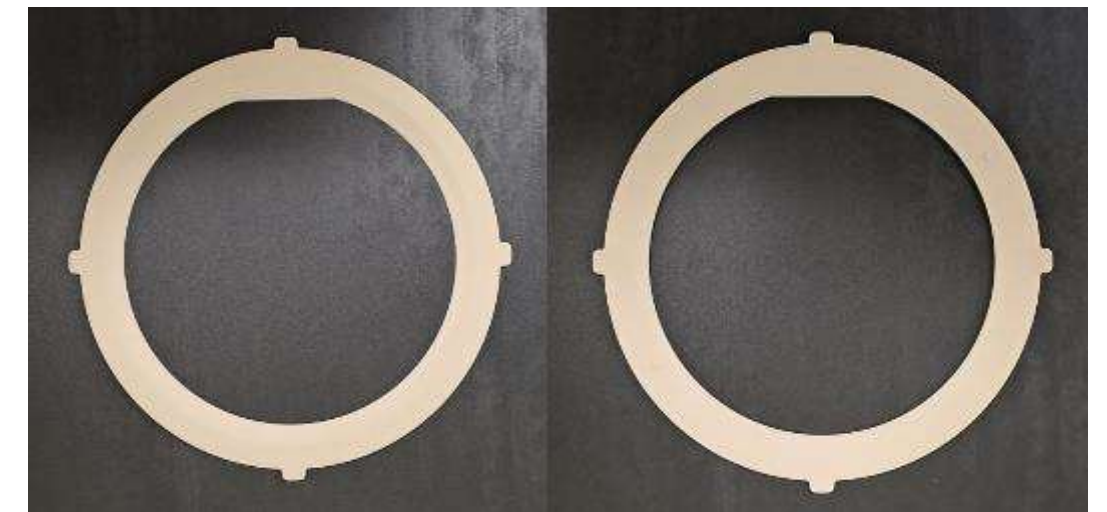
SEMI Parts- ALN & Y2O3



AIN BRACKET NOZZLE

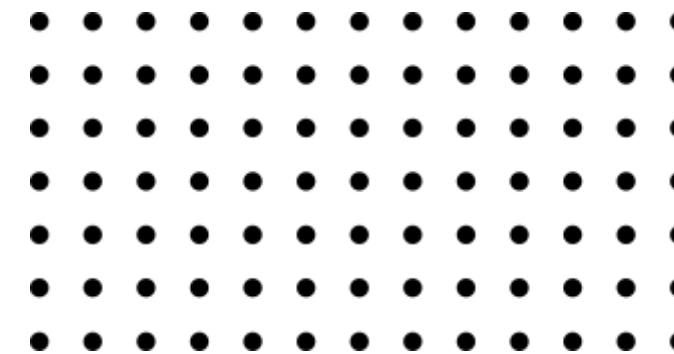


DXZ COVER PLATE 0200-36629

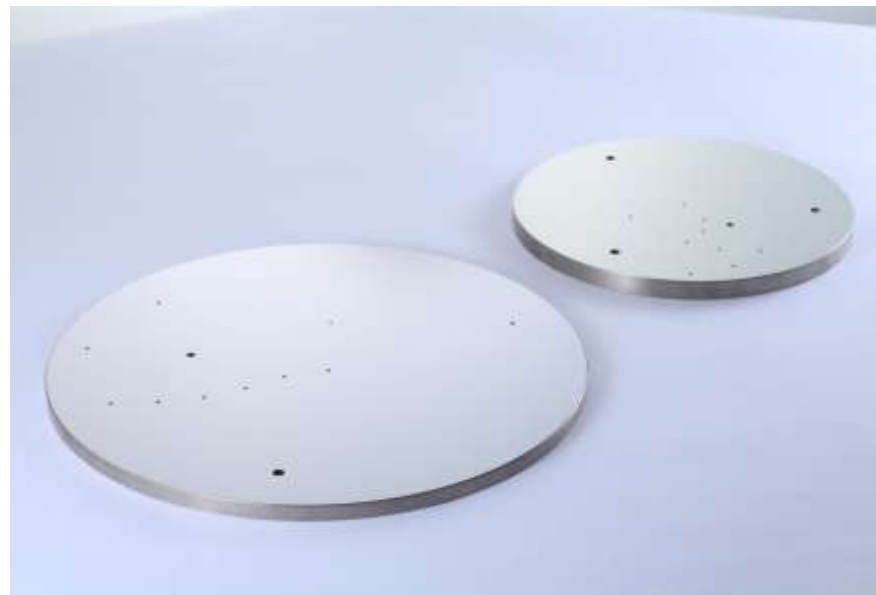


SHADOW RING_0200-04302

SEMI Parts-RTP



12" AMAT UNI-Ring
0200-23001
0200-23002
0200-02917



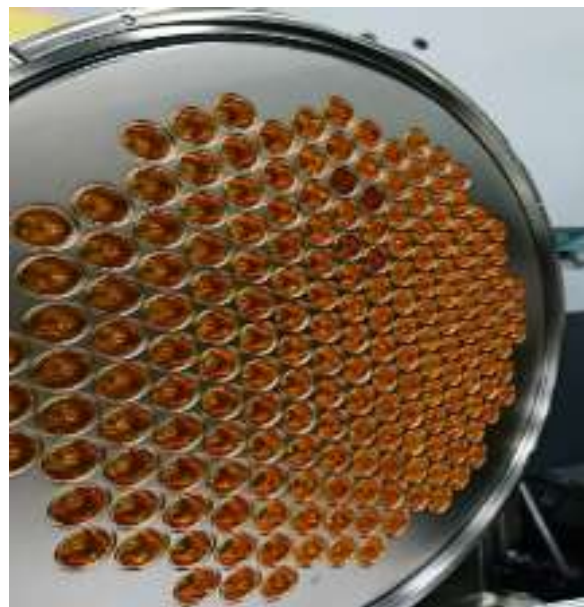
12" AMAT Reflector Plate
0041-12192
0041-12156
0041-39482

12" AMAT Susceptor
0200-01947

12" AMAT Support Cylinder
0200-15617
0200-04094



12" AMAT Lamp Taper
0021-36086
0021-35055
0020-01419



12" AMAT Lamp Housing
0040-88855
0040-70247



12" AMAT Lamp
0190-38516
0190-38517



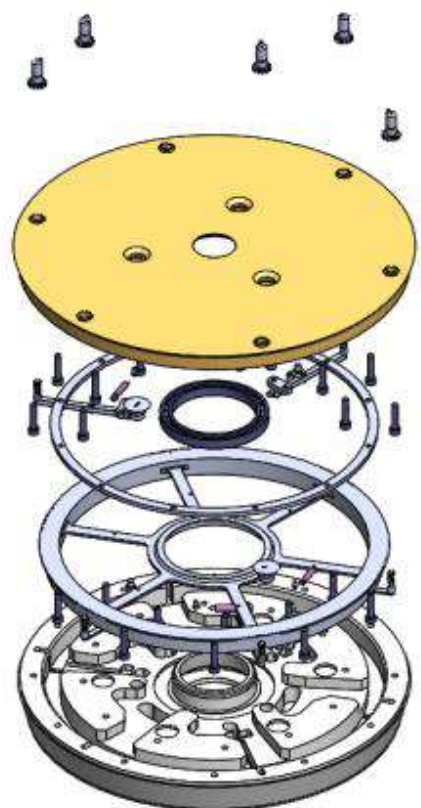
SEMI Parts-Wet



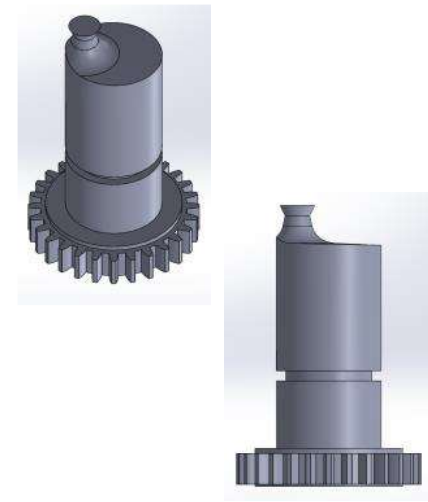
12" DNS Spin Base
3100/3200/3300
6A61060701



12" DNS Chuck Pin
6A610608



12" Lam Spin Base
853-109087-262
853-109087-201



12" Lam Chuck Pin
2360570-01

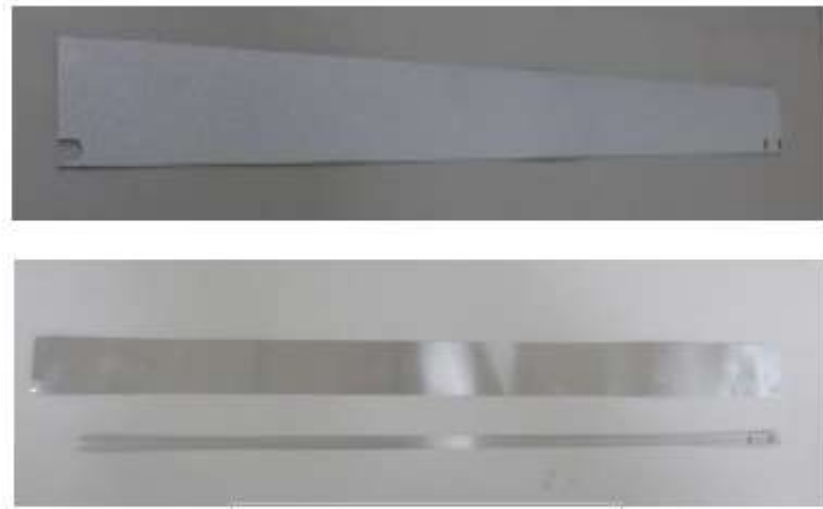


12" ACM Chuck Pin
506-0065



Test Tool

LCD/AMOLED Parts- Lamp & Clamp & Other



Grounding line(鋁/鎳鉻合金)



Display Parts-Pad



液晶噴墨頭



Probe Pin



PVD-Clamp



Display Parts-Lift pin



Lighting Lamp



SEMI Maintenance service



CO2 DIW water system

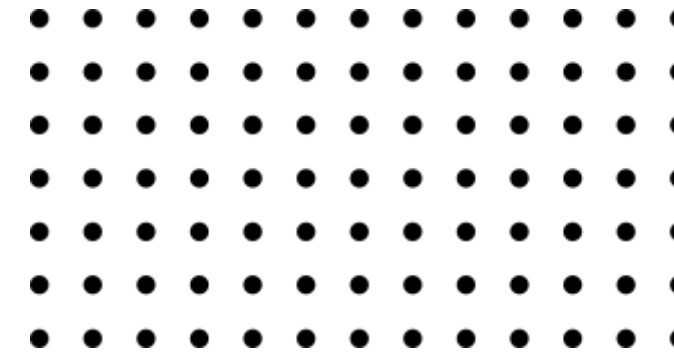


乾式超聲波清潔 Dry Ultrasonic Clean



SEMI Maintenance service

BARATRON Gauge



4x / 5x Series



600 Series



700 Series

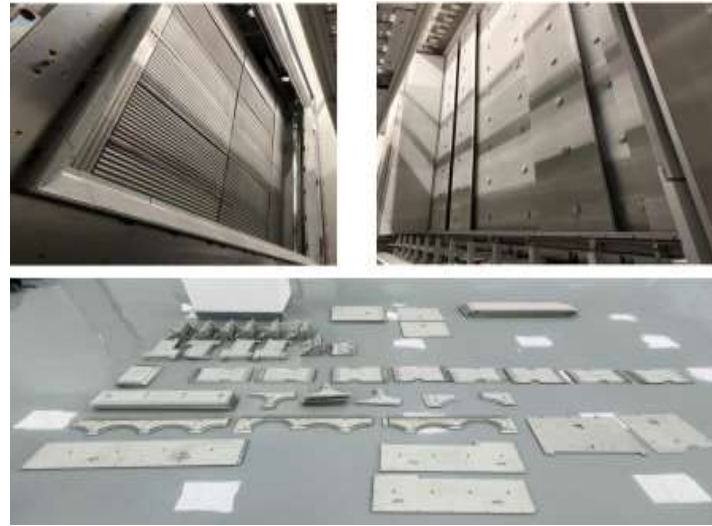


E2x Series



Test Tool

LCD/AMOLED Parts-Ceramic & Mask & Other



PVD-Mask



大型Plate



Golf tee & Bushing set



Adapter



Carrier Car



Carrier Holder

SEMI / LCD / AMOLED Maintenance service

-Chiller



AMAT



NESLAB STEELH...



NESLAB HX-150



NESLAB M33



Julabo FC1600T



NESLAB SYSTEM3



HB-THERM HB-W...



Thermo CUBE



TAITEC CH-800B



EDWARDS TCU4...



ATS DEX-20A



Daikin DI MAX



SMC HRZ001-L-D



SMC HRG001-W-A



SMC H-2000 INR...



Daikin UBRP3AM...



ATS NX-20A-GL



ATS M-PAK

SEMI/LCD/AMOLED Maintenance service

-MB/ RF/ MOTOR/ MKS/VALVES



MOTOR



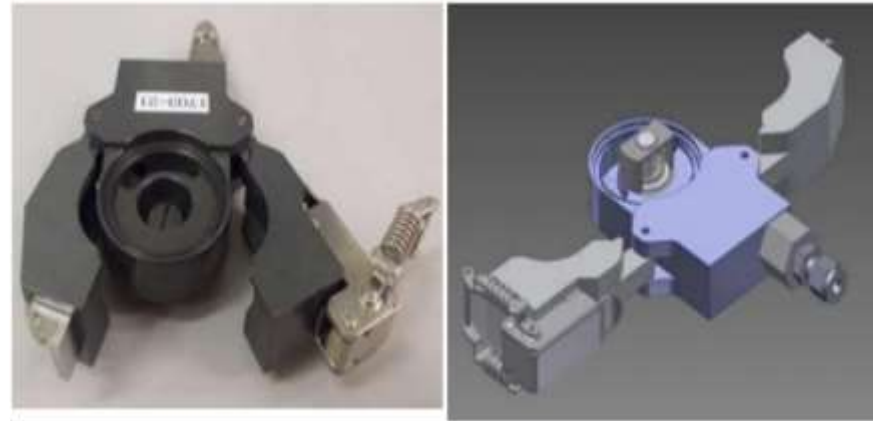
RF Power Supply



MKS RPSC 2~30L

SEMI/LCD/AMOLED Maintenance service

- VALVE/ CDU/PUMP 節能



Pump 節能



Gate valve



SDT 突波吸收




CDU/RDU



SEMI / LCD / AMOLED Maintenance service

- Cryo PUMP

Suzuki型	型號系列	Aisin型	型號系列
	A-100 Lseries		SA-08FA-11 series
	A-150 series		SA-10FI-11 series
	A-200 series		SA-12FA-11 series
	A-200F series		SA-06SJ-11 series
	A-250F series		SA-08SJ-11 series
	A-300 series		SA-10SI-11 series
	A-300F series		SA-12SA-11 series
	A-350 series		SA-14SJ-11 series
	A-400 series		SA-16SJ-11 series
	A-550 series		
	A-570 series		
CTI 型	型號系列	ULVAC 型	型號系列
	CT-8		CRYO-U4H
	CT-8F		CRYO-U6H
	OB-8		CRYO-U8H
	CT-10		CRYO-U10H
	OB-10		CRYO-U12H
	CT-250F		CRYO-U16
	OB-250F		CRYO-U20P
	CT-250F		
	CT-400		
	OB-400		



SEMI / LCD / AMOLED Maintenance service

– Turbo PUMP



 **SHIMADZU**

- 303 ▪ 403 ▪ 803 ▪ 1003 ▪ 1303
- 1503 ▪ 2203 ▪ 2403 ▪ 2404 ▪ 2804
- 3203 ▪ 3403 ▪ 3413 ▪ 3804 ▪ 4304 ▪ V1704
- V2304 ▪ V3304 ▪ W2403 ▪ W3503 ▪ H3603



 **EDWARDS**

- 1303 ▪ 1603 ▪ A2203 ▪ A2503 ▪ A3503
- XA2703 ▪ XA3203
- XA4503 ▪ IXA2206 ▪ IXA3306



SEMI / LCD / AMOLED Maintenance service

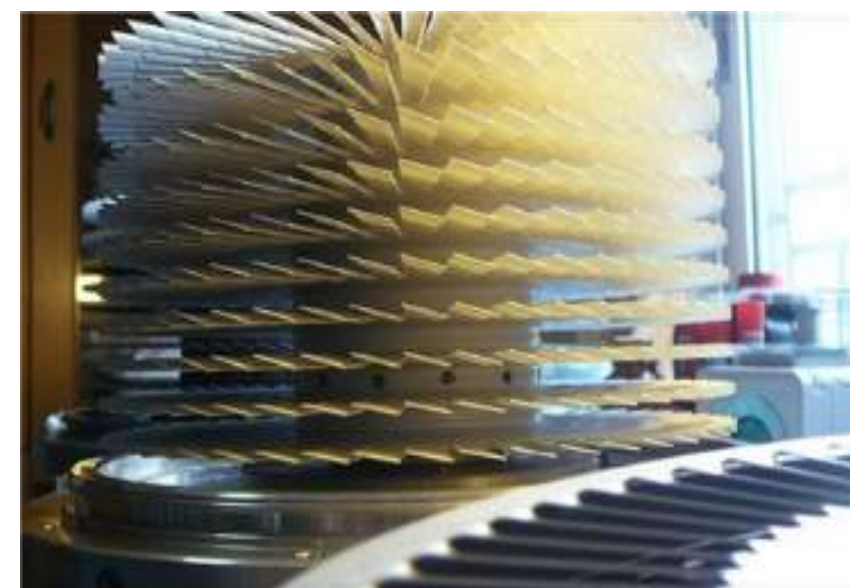
- Turbo PUMP



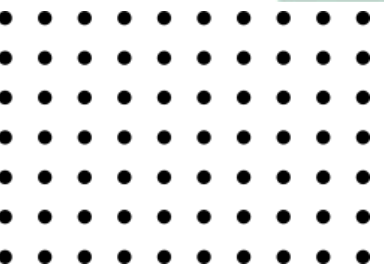
Seiko Seiki Pump



Shimadzu Pump



Mitsubishi Pump



Transformation of equipment and system



AMHS OHT



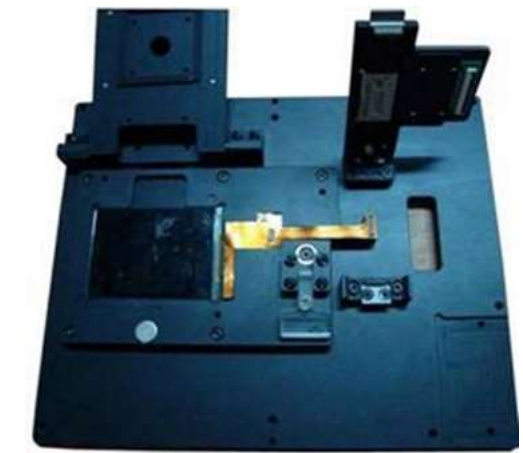
AMHS STK



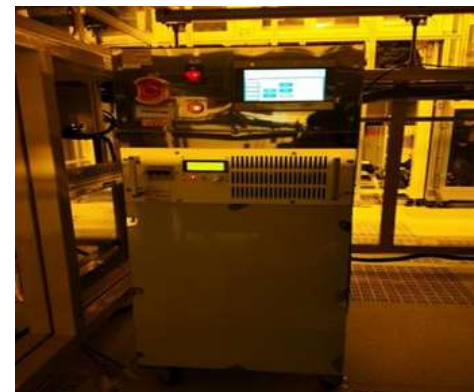
無風離子棒



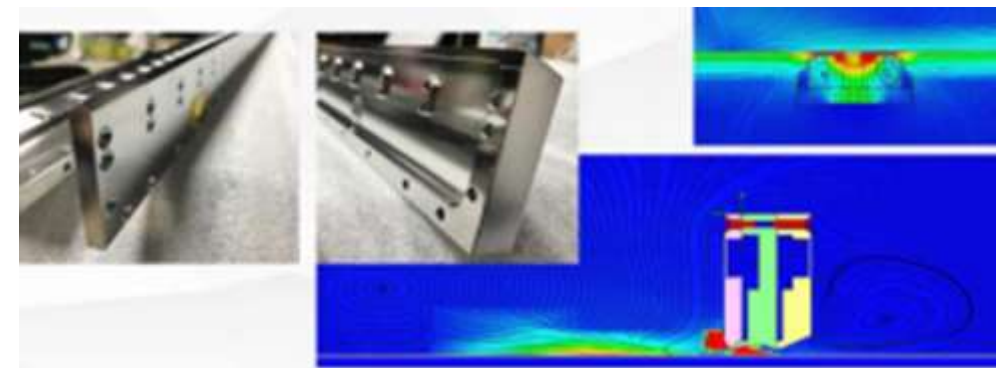
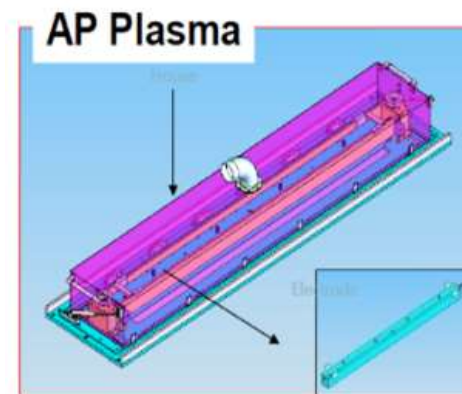
點燈機



Probe Pin



PVD-Clamp



Display Parts-Lift pin



Lighting Lamp

Total Solution in Water treatment engineering



We Provide:

Water system Evaluation, Basic design, Detail Design, Installation, Testing, Operation and Maintenance.



Service Include:

DI water supply system, Wastewater treatment system, Wastewater Reclaim system.



Application Field:

Include most industry in Semi-conductor, LCD, Solar cell, LED, PCB, Mechanical, Medicine etc.

Water treatment engineering

DI water system

Grade: RO water/
DIW/UPW

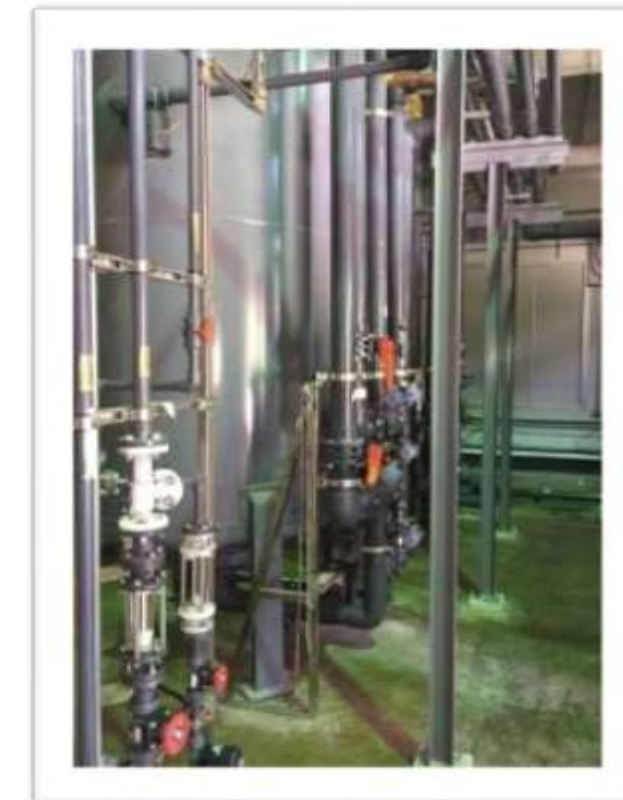
- Pre-treat Unit: MMF/ACF/SF
- Further-treat Unit: 2B3T/RO /MB/EDI
- Post-treat Unit: UV/Polisher/MD/UF



MMF+ACF



CEDI



2B3T



RO



UV/Polisher

Water treatment engineering

Wastewater system

- Chemical Reaction Treatment: HF wastewater/As wastewater/Heavy-metal wastewater.
- Bio-treatment: UASB, A/O, MBR, Contact aerator.
- NH₃ treatment: Membrane separation, High-G Stripper, Electrolysis oxidation



HF Batch Reactor



Chemical Sedimentation



High-G stripper



NH₃ Membrane separation unit



As Batch Reactor



UASB



MBR

Water treatment engineering

Wastewater Reclaim system

- Inorganic Wastewater Reclaim: MMF/ACF/UF +RO °
- Organic Wastewater Reclaim : MBR + RO



UF/RO



MMF



MBR- Submerged type



MBR- Tube type



UF

Equipment - Olympus wafer inspection and review system



AW5000



Full Auto

FR3200



Semi Auto

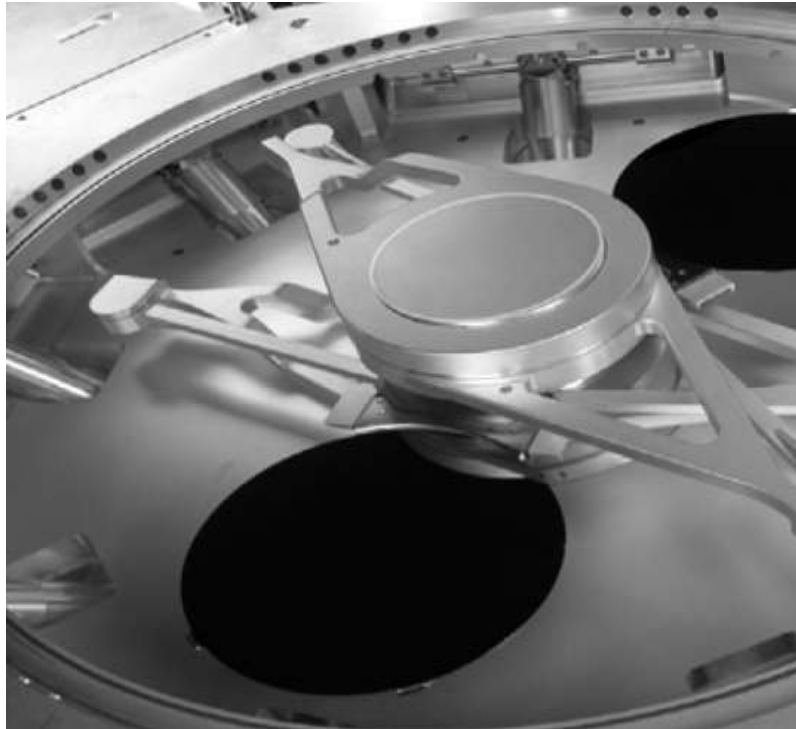
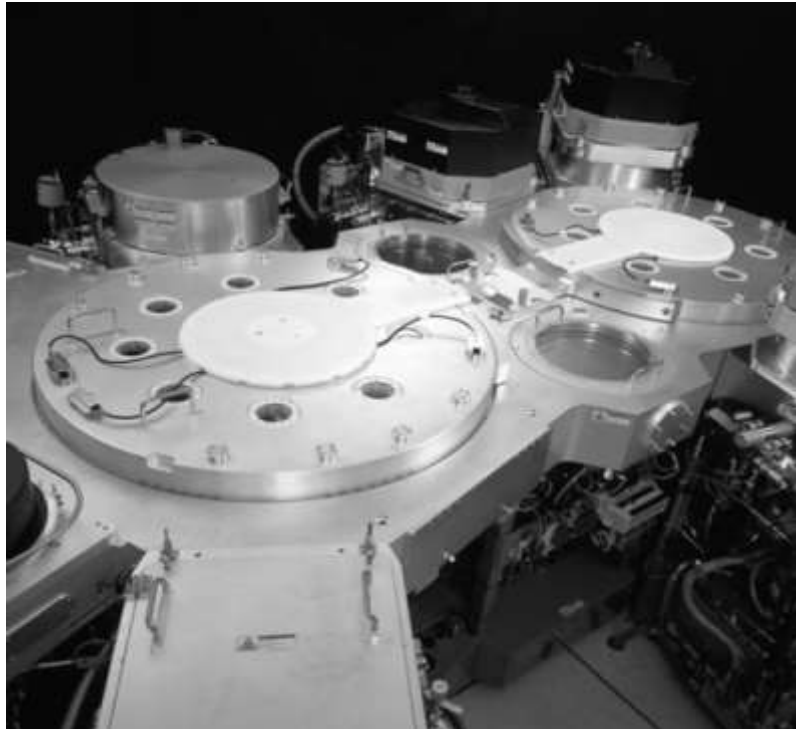
AL3300



Semi Auto

AMAT Robot : XP service

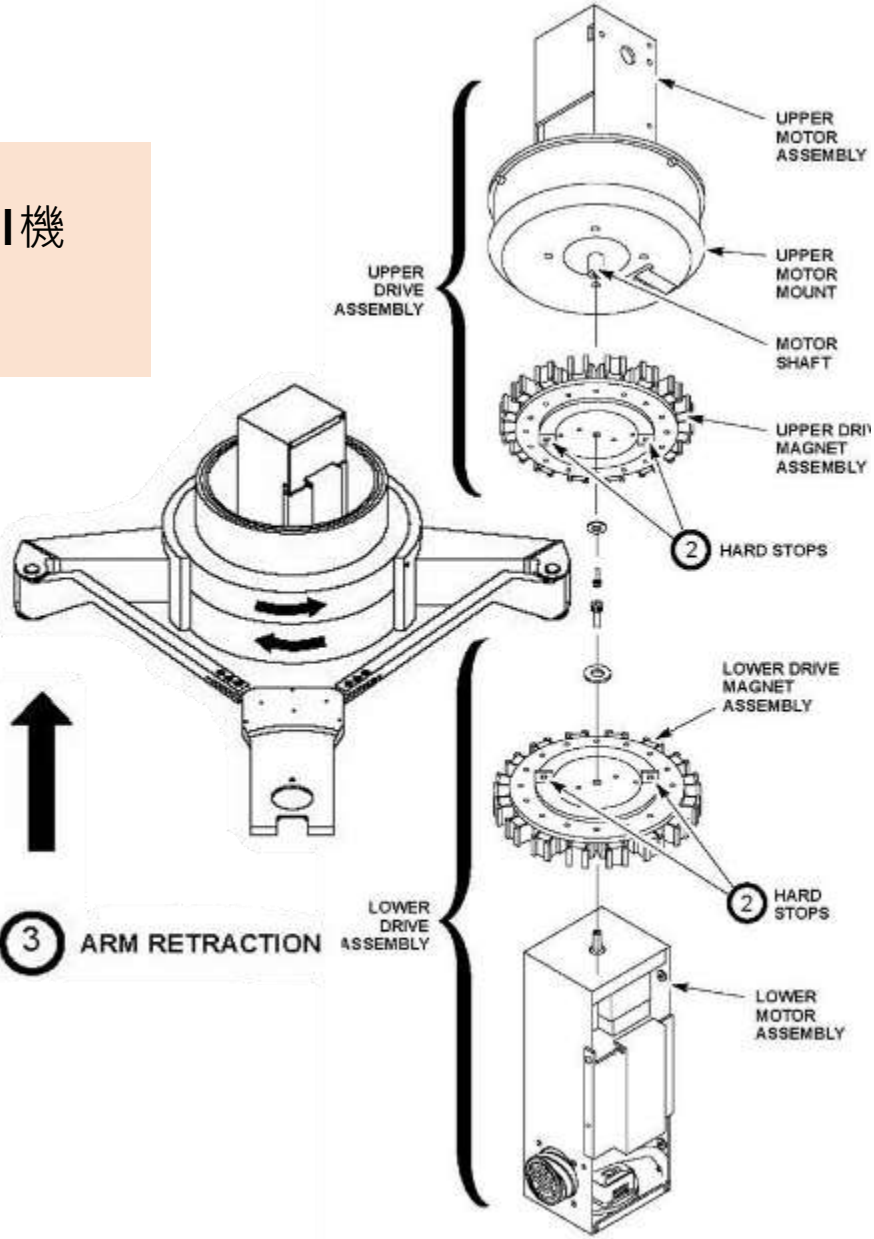
AMAT XP Robot overhaul



XP Robot Service :
1.Overhaul
2.Exchange

HP Robot測試平台

測試平台可模擬 Applied Material機台robot運行狀態

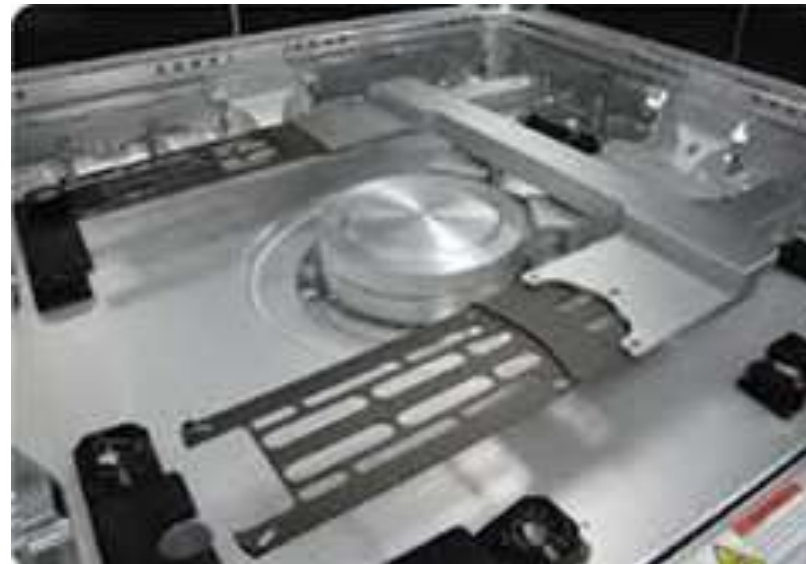


VHP Robot service

VHP Robot Overhaul
Presentation



VHP Robot for 200mm &
300mm Tool



VHP Robot Armset



8" Centura type



Producer type



12" ETCH type

200mm tool ~
ETCH AMAT DPS
CVD AMAT HDP
CVD PRODUCER
PVD ENDURA tool
Transfer robot

300mm tool ~
ETCH AMAT EMAX
ETCH AMAT DPS2
CVD PRODUCER

HP Robot service

HP Robot Introduction



HP Robot Service :
1.Overhaul
2.Exchange

適用機台



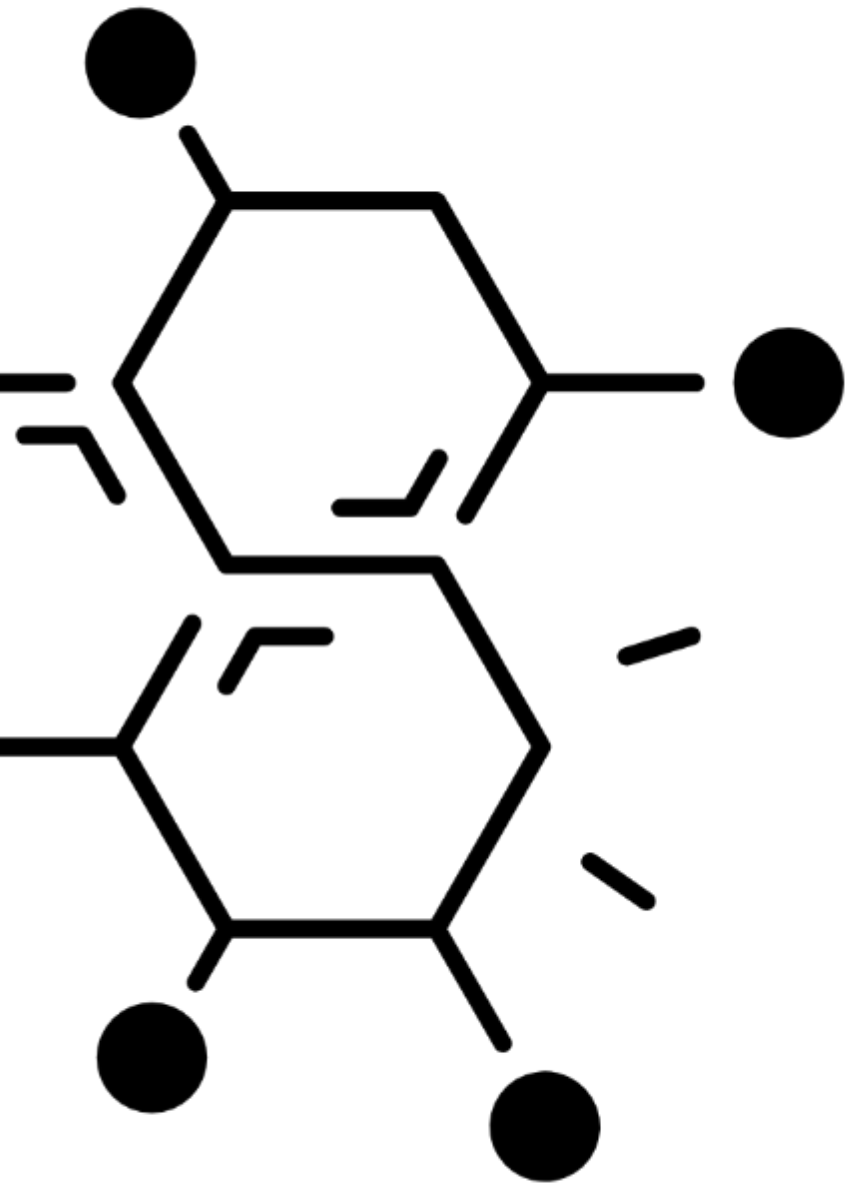
Application : Centura-CVD, Endura- PVD
Etch-Mxp ,Super E ,DPS , HDP
Lead Time : 1~2 weeks
Warranty : 6 months

Adjust home sensor feedback voltage



Measure sensor feedback voltage after
replace new sensor
Spec: < 1 voltage

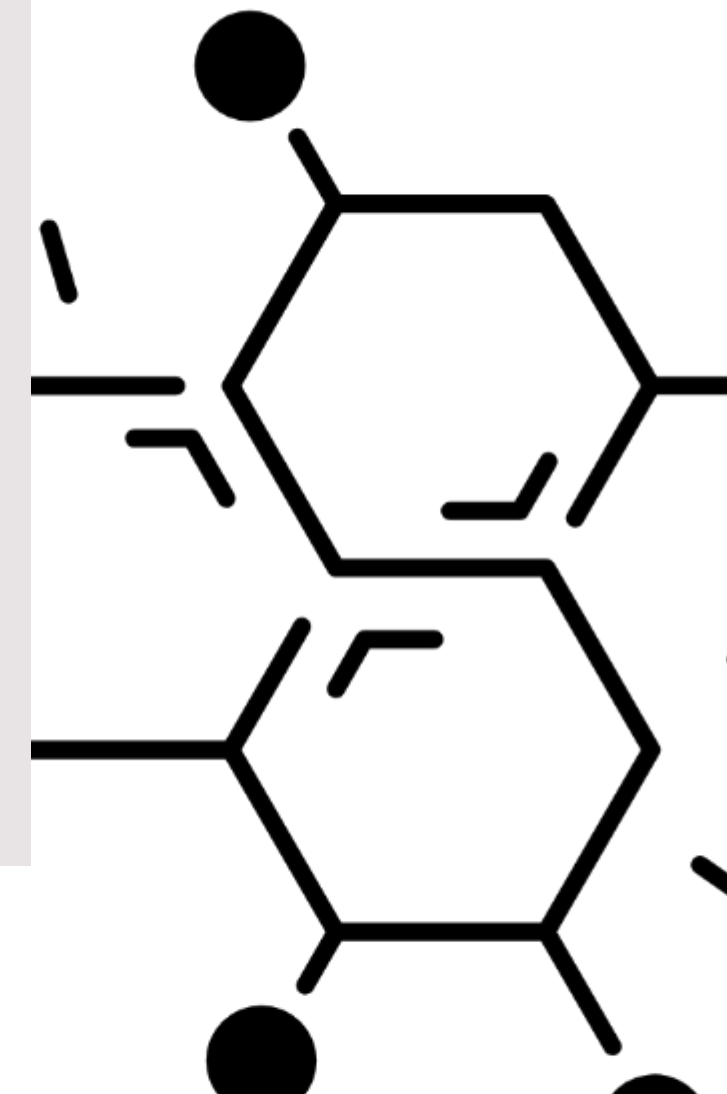
Chemicals



Group	Product name	Target thickness	Characteristic	
Semiconductor	KrF Photoresist	YKP-503	<ul style="list-style-type: none"> Thickness 0.54um (Res. 180nm, 250nm) Implant & Etch Layer 	
		YCKP-1654	<ul style="list-style-type: none"> Thickness 0.54um (Res. 180nm, 250nm) Implant & Etch Layer 	
		AYCKP-7930	<ul style="list-style-type: none"> Thickness 0.30um (Res.180nm) Implant Layer 	
		YKN-510	<ul style="list-style-type: none"> Thickness 0.54um (Res. 180nm, 250nm) Implant & Etch Layer 	
		YCKN-4530	<ul style="list-style-type: none"> Thickness 0.30um (Res.180nm) Implant Layer 	
		YCKN-2954	<ul style="list-style-type: none"> Thickness 0.54um (Res. 180nm, 250nm) Implant & Etch Layer 	
	TSV Thick Photoresist	YPP-T6K	6.0um	<ul style="list-style-type: none"> Thickness 6.0um (Res. 6.0um, Contact Hole) i-Line Positive TSV Devices
		AYCKP-9160	6.0um	<ul style="list-style-type: none"> Thickness 6.0um (Res. 5.0nm, Contact Hole) KrF Positive TSV Devices
	BARC	YCB-240	0.024um	<ul style="list-style-type: none"> Thickness 0.024um TSV package BARC – Ball grid array bumping process
		YA-400	0.04um	<ul style="list-style-type: none"> Thickness 0.04um ArF BARC
		YA-600A	0.06um	<ul style="list-style-type: none"> Thickness 0.06um Gapfill BARC
YA-800		0.08um	<ul style="list-style-type: none"> Thickness 0.08um ArF BARC 	
TARC	YCTA-9047	0.43um	<ul style="list-style-type: none"> Environmentally safe; PFOS/PFOA issue free Low refractive index pH controllable 	

Chemicals

Group	Product name	Target thickness	Characteristic	
Semiconductor	Spin On Carbon Hardmask	YHS-80 / YHS-140 / YHS-330 / AYCHS-2819	0.08um 0.13um 0.33um 0.19um	<ul style="list-style-type: none"> High Tg Low defect density
		YCHS-130 / YCHE-3731 / YCHE-4359 / YCHE-20	0.2um 0.31um 0.59um 2.0um	<ul style="list-style-type: none"> High Tg, High etch resistant Low Fume High carbon content (more than 85 wt%)
		YCHS-3814	0.08um	<ul style="list-style-type: none"> Planarization SOC
		YS-210	0.21um	<ul style="list-style-type: none"> Thickness 0.21um Normal SOC
	CMP	NTS-300	-	<ul style="list-style-type: none"> Slurry for polishing semiconductor SiO₂/Poly/Nitride layer. Alternative of selective/non-selective polishing.
		YCHT-S902 / YCLW-S804		
		SW-300		<ul style="list-style-type: none"> CMP slurry for Tungsten buffing process W Removal Rate: ≥ 30 Å/min
		YPCC-2000	-	<ul style="list-style-type: none"> Contamination remove and corrosion control after the CMP process.



SOLVEX 代理

社名 SOLVEX 株式会社
設立 昭和56年10月15日 (1981年)
資本金 7,000万日元
代表 代表取締役会長 藤原 忠生
代表取締役社長 藤原 敏雄
總公司位址：福井市江守中町7号9-1

- ・ 有機化学工業製品の製造及销售
- ・ 表面活性剤の製造及销售
- ・ 有毒有害物品的销售
- ・ 計量器具的销售及修理
- ・ 無機化学工業製品の製造及销售
- ・ 塗料・顔料・染料的销售
- ・ 精密機械器具及纖維機械的销售
- ・ 工業用塑料原料及製品的销售

- ・ 貴金属・非鉄金属地金及塩類的销售和回收
- ・ 上述各項付帶的一切業務



株式会社 ソルベックス®



SOLVEX PRODUCT INFORMATION (1)

氟素系 (PFPE 系) 溶劑 _ SOLBLE · GH 系列與 TH 系列

SOLBLE-GH和TH系列是基於PFPE的惰性液體，沸點在170°C至270°C範圍內。由於其優異的性能，它作為各種電子元件的絕緣測試液體和溫度控制的加熱介質非常有效。

它具有較高的化學穩定性和熱穩定性，可在低溫和高溫條件下發揮作用，非常適合電子產品的品質測試。



株式会社ソルベックス®

洗淨

- 電子部品、精密部品、樹脂部品の精密洗淨及輕質油除去、異物除去
- 金属加工部品の洗淨
- 氟素油、潤滑油類的除去
- 氟素Depot類的除去
- 光学部品類的洗淨、乾燥
- 高沸点溶劑 (炭化水素類) 的置換乾燥
- 各種部品及裝置類的擦拭洗淨及浸泡洗淨

溶媒

- 氟素油、潤滑油類類的溶劑、氟素塗層劑的溶劑
- 氟素樹脂聚合物類的溶解及分散

檢查與熱媒體

- 各種Chiller恒温槽的熱媒体
- 氣密性测试的媒体
- 耐電圧测试的媒体
- 熱衝擊測試 其他
- 用於氣溶膠的不可燃清潔溶劑

SOLVEX PRODUCT INFORMATION (2)

高性能含氟溶劑

SOLBLE- GE1000/GN2000/GN3000/GE1700/GS1300

SOLBLE-F系列，由於大型含氟化學品製造商停產。與現有含氟溶劑結構相同，是高性能含氟溶劑，無需改變現有設備即可使用。請用作精密清潔劑、油脂的稀釋溶劑、各種冷水機和恆溫器的加熱介質以及氣密性測試的介質。



株式会社ソルベックス®

主要物理性能の比較		物性値 Technical parameters				
項目	單位	SOLBLE- GN2000	SOLBLE- GN2000	SOLBLE- GN3000	SOLBLE- GE1700	SOLBLE- GS1300
種別	°C	HFE	HFE	HFE	PFPE	PFC
沸点	°C	59	76	98	170	128
流動点(凝固点)	°C	-135	-138	-38	-100	-65
蒸気圧	Kpa(25°C)	26.9	14.53	5.9(20°C)	0.1	1.3
蒸発潜熱(沸点)	KJ/Kg	126	126	102	67	84
密度	g/cm ³	1.5	1.43	1.69	1.77	1.83
動粘度	cst	0.38	0.4	0.7	1.81	0.75
絶対粘度	cP	0.6	0.57	1.2	-	1.4
比熱	J/kgK	1172	1214	1137	1000	1100
熱伝導度	W/mK	0.069	0.069	0.062	0.065	0.066
表面張力	mN/m	13.6	13.6	15	18	14.6
膨張係数	m ³ K/m ³	0.00171	0.00158	0.00144	0.0011	0.0012
屈折率		1.27	1.28	1.28	1.28	-
絶縁耐力	kV	28	23	27	40	>40
体積抵抗	Ωm(DC500V)	1.0x10 ⁹	2371.0x10 ⁸	1.0x10 ⁹	1.0x10 ¹⁵	1.0x10 ¹⁴
誘電率 1kHz		7.5	7.4	6.1	1.94	1.9
水の溶解度	ppm	95	92	67	14	11
水中溶解度	ppm	12	<20	<1	26	<5
引火点	°C	なし	なし	なし	なし	なし
燃焼範囲	Vol%	なし	なし	なし	なし	なし

SAFETY GUARANTEE



● 廈門泛光云電子科技 ISO 9001



● 廈門泛光云電子科技 ISO 14001



● 光云科技 ISO 9001 & 14001



● 泛光云科技(江蘇) ISO 9001 & 14001



● 成心科技 ISO 9001



● 危險化學品經營許可證

GLORY SUCCESSFUL Group



SUCCESSFUL HEART
TECHNOLOGY

成心科技股份有限公司



SINGAPORE
SUCCESSFUL HEART

SUCCESSFUL HEART
TECHNOLOGY (SINGAPORE)
PTE. LTD.



JAPAN
SUCCESSFUL HEART

日本成心株式會社 (ニホ
ンセイシンカブシキガ
イシャ)



SUCCESSFUL HEART
VACUUM CO., LTD

成心真空股份有限公司



GLORY CLOUDS

光云科技股份有限公司



GLORY SUCCESSFUL

- 廈門泛光云電子科技有限公司
- 泛光云科技(江蘇)有限公司



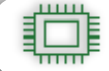
深圳市美凱尼斯
科技有限公司



晶采電子商務股份有限公司
JCI E-commerce

晶采電商股份有限公司

Customers



SEMI



UMC



nuvoTon
新唐科技



winbond
We Deliver

hys
HON YOUNG
SEMICONDUCTOR CORPORATION
鴻揚半導體

United Semi



CanSemi

ALPHA & OMEGA
SEMICONDUCTOR
万国半导体有限公司

華潤微电子
CR MICRO



JHIC 晋华



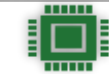
SiEn 芯恩

SK hynix

福联集成

WTSMC
沃泰芯半导体

SMIC
中芯国际集成电路制造有限公司
Semiconductor Manufacturing International Corporation



Packaging



SPIL



OLE
渠梁电子有限公司
Quliang Electronics Co., Ltd.

新汇成



LCD



AUO

HannStar

INNOLUX

CEC | CHOT
中国电子

CTC
深超光电

HKC



MANTIX

SDP
超视界显示技术

TIANMA

TCL 华星



Thank you.