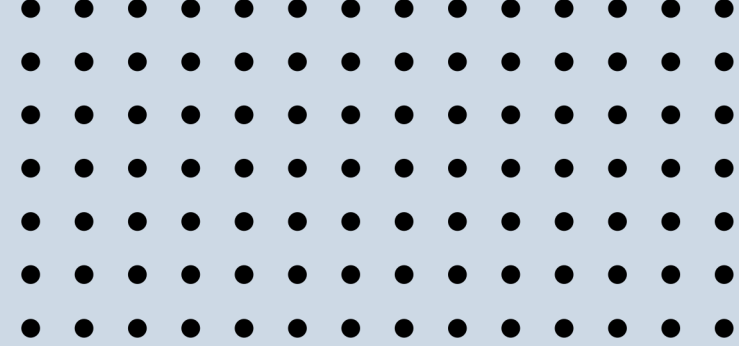




GLORY SUCCESSFUL
泛光云集團





泛光云集團

GLORY SUCCESSFUL

負責人：金相勳 / 邱國威

設立日期：**2009.11**

資本額：**NTD 100,000,000**

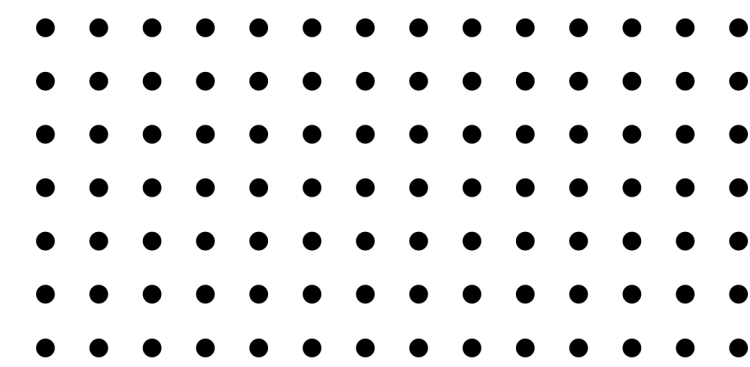
半導體/面板- 代理產品/維修/設備機台買賣,改善

員工人數：**130**位

台灣總部：**35059** 苗栗縣竹南鎮公義里群義路**38**號

大陸總部：廣東省東莞市常平鎮星匯中心**1006**號

COMPANY HISTORY



2009

- GCT 設立 Repair center



2010

- SHT 設立



2011

- CMO/AUO Vender code
- UMC/Micron/
Winbond Vender code



2012-2013

- Jiufeng 設立
- AKT OEM Vender code



2014-2015

- SHT 公司搬遷
- MECHARONICS SZ 設立
- CSOT/TIANMA Vender code
- GCT ISO 9001/14001 認證
- UMC 12X/TLURY/
APPLE Vender code



2018-2019

- TSMC Vender code
- GCT Chiller Repair
部門設立
- CXMT/JHICC Vender code
- HKC Vender code



2020

- Water treatment
engineering 設立
- UMCXM Vender code



2021

- Xiamen Office 設立
Repair center
- MECHARONICS SZ 搬
遷
- SHT ISO 9001 認證
- GCITCXM ISO
9001/14001 認證





2022-Now

- SHT Turbo & Cryo
PUMP Repair center
- NanJing Office 設立
- TSMC南京/YMTC
/CHOT Vender code

LOCATION




TAIWAN

-  Zhunan Headquarters & Repair Center
-  Tainan Office & Chiller Repair Center

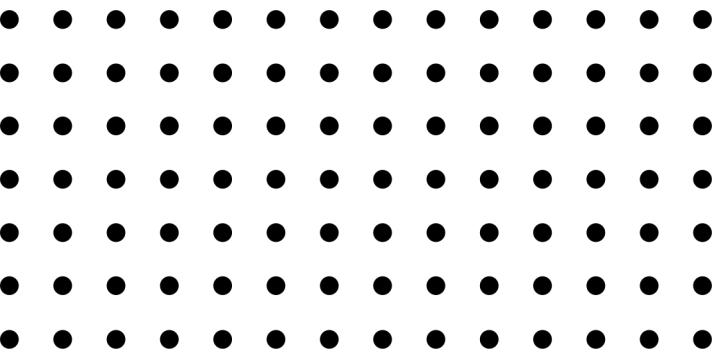
VIET NAM

-  Hanoi office

CHINA

-  Shenzhen Office
-  Xiamen Office & Repair Center
-  NanJing Office & Repair Center
-  ChongQing Office

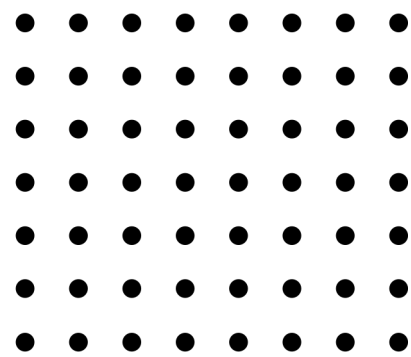
HEADQUARTERS



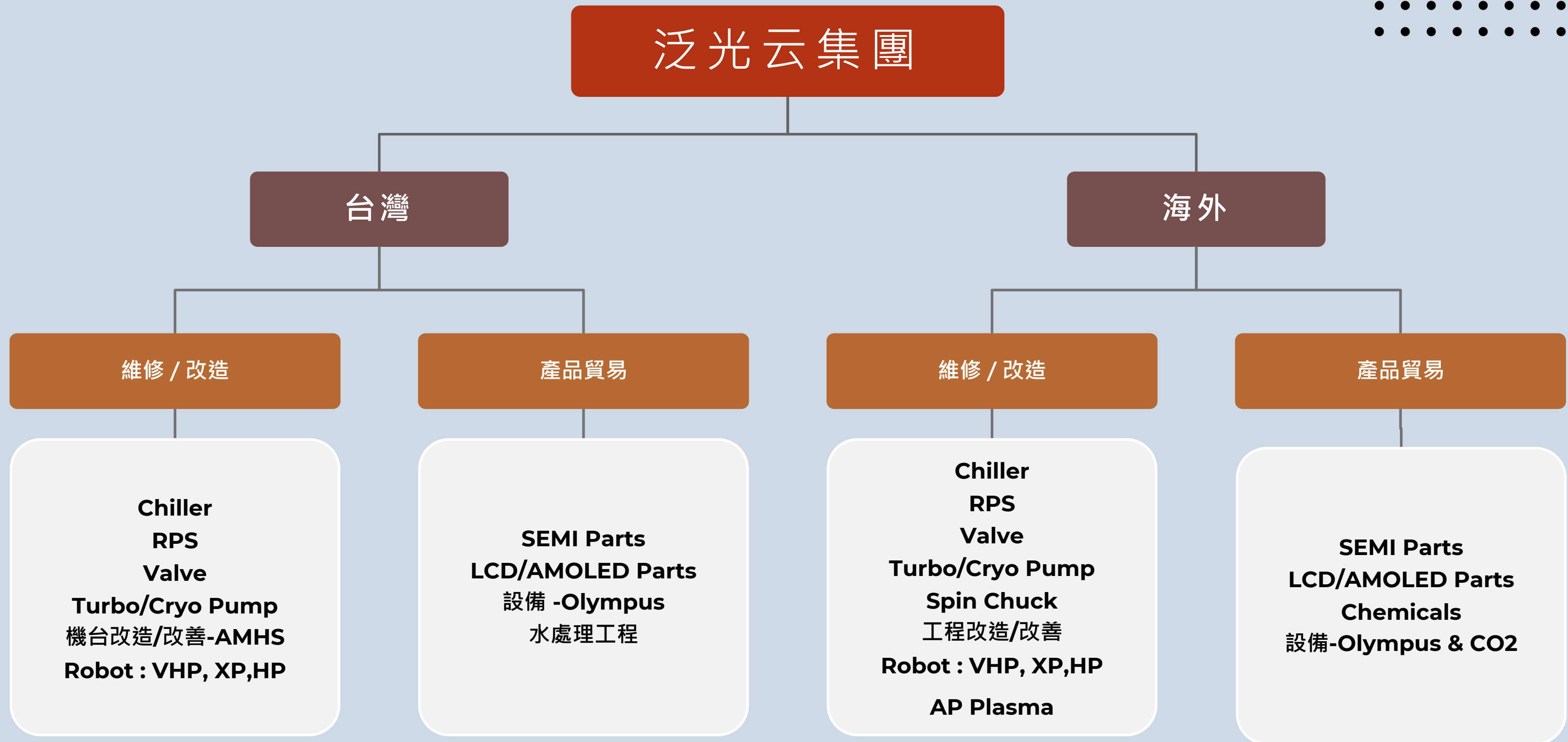
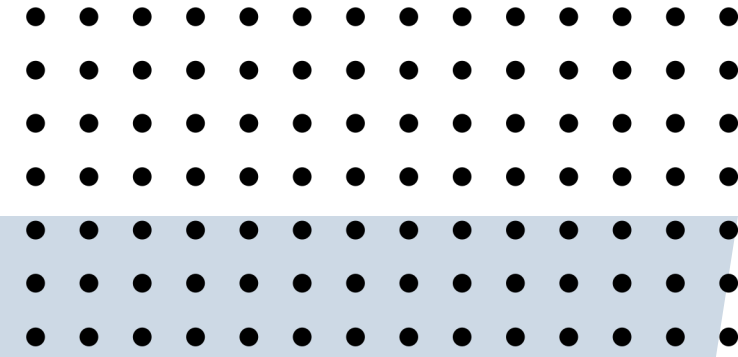
Xiamen Office & Repair Center



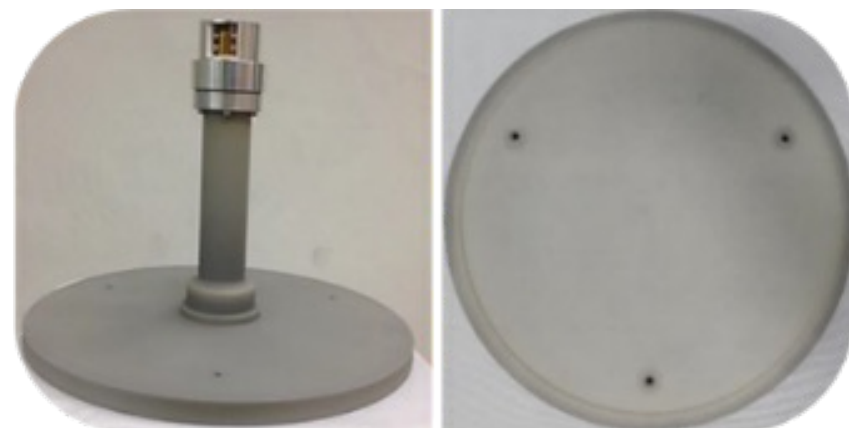
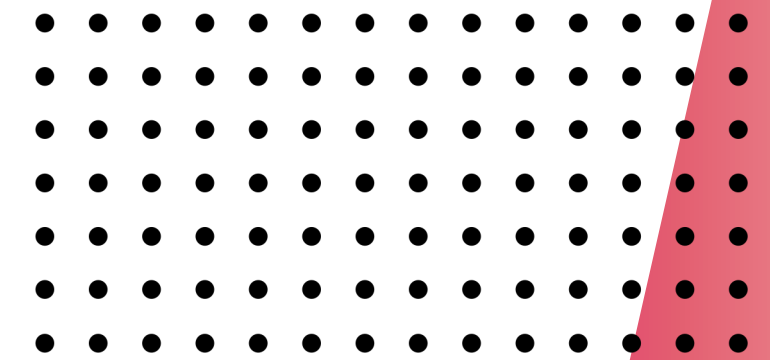
NanJing Office & Repair Center



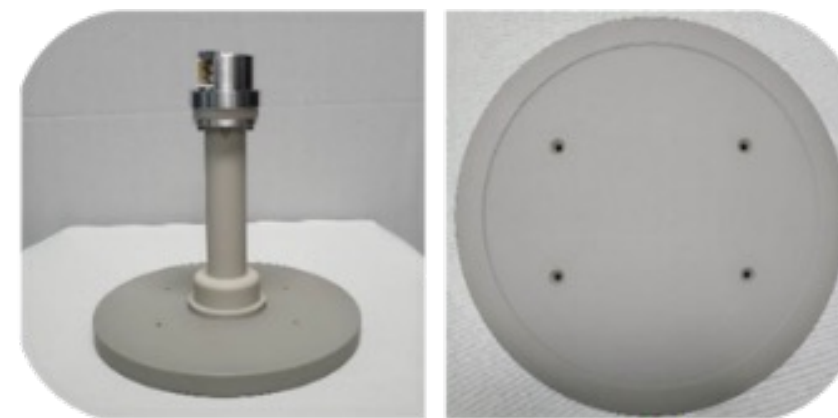
Product applications



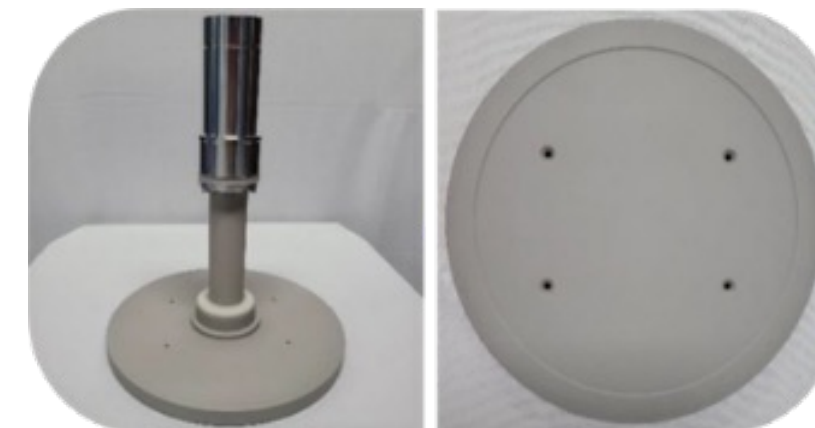
SEMI Parts -AIN Heater



12" AMAT Producer
AIN heater

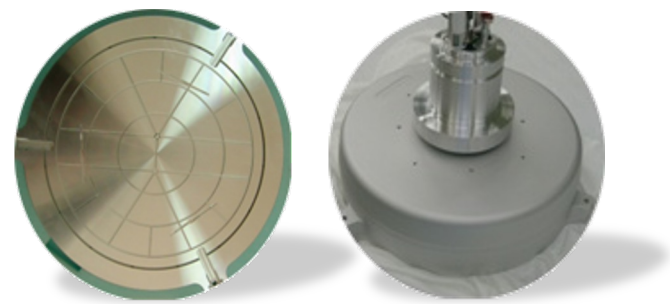
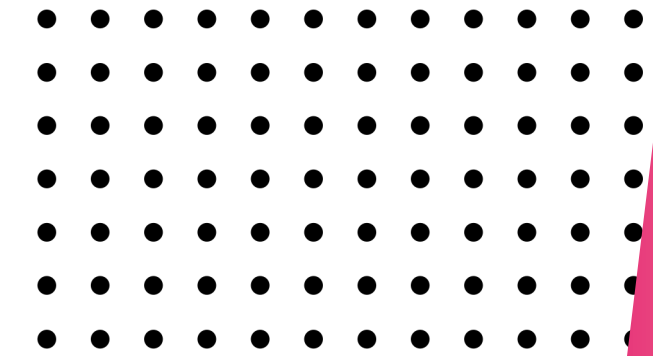


8" AMAT Producer
AIN heater

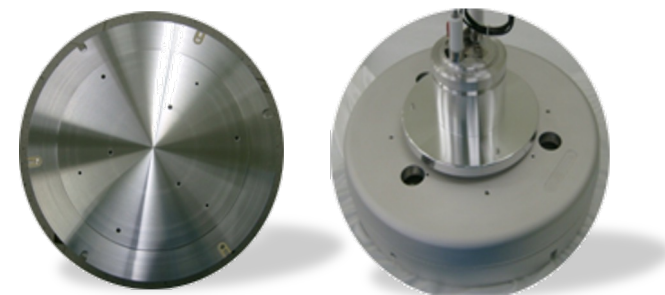


8" AMAT Centura
AIN heater

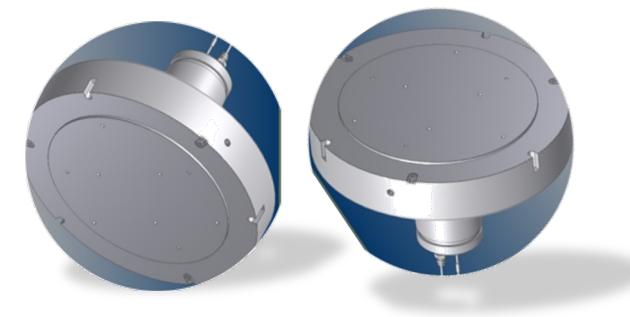
SEMI Parts -Al Heater



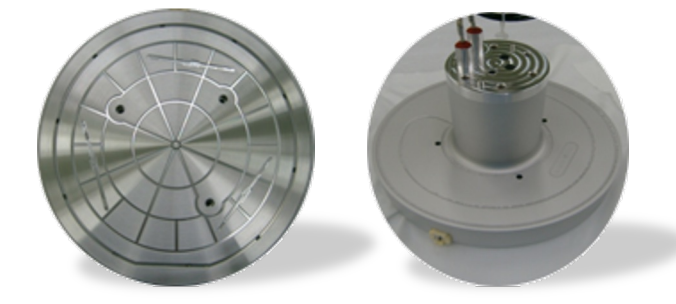
Pedestal 12"



CVD Heater 12"



**Vector
Heater 12" AIF extreme**



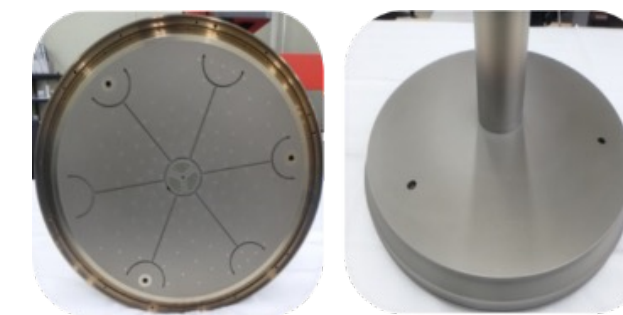
Pedestal 8"



Pedestal 12" ATM

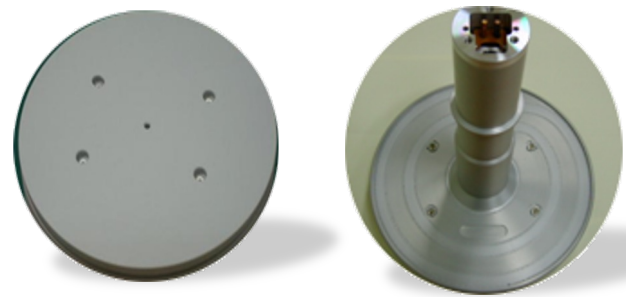
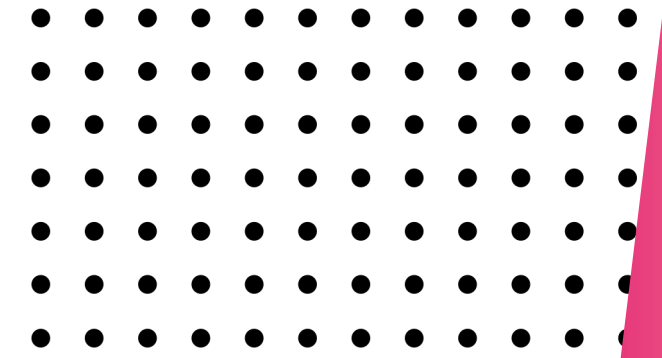


**Vector
Heater 12" Normal
(AIF Coating Type)**

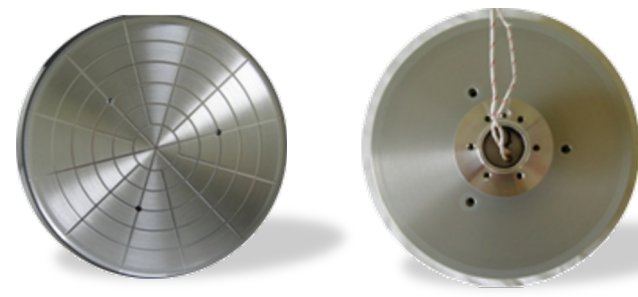


**12" AMAT ENDURA MCA Heater
(0040-91179 / 2nd new/SUS Heater)**

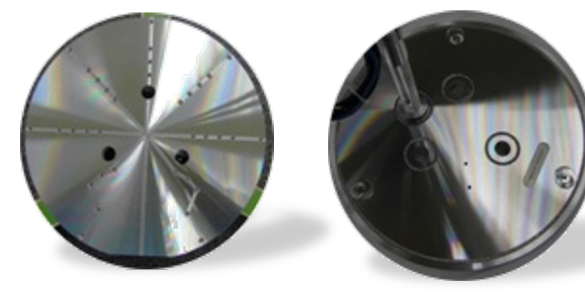
SEMI Parts -Al Heater



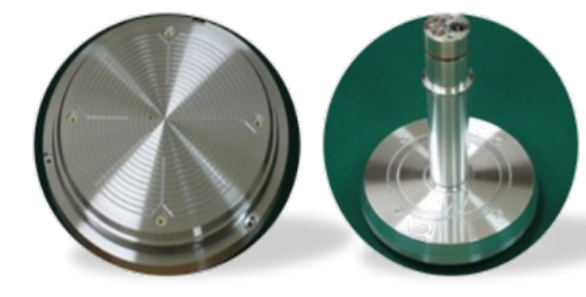
FORGED DXZ 8"



DAS 2000



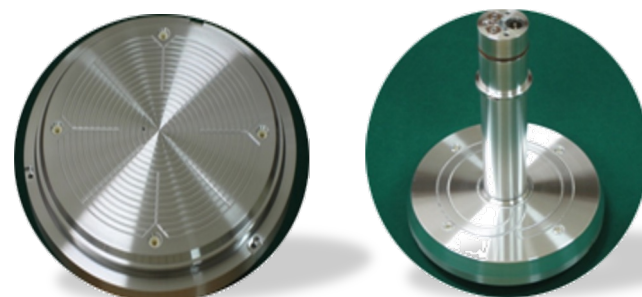
GASONIC 8"



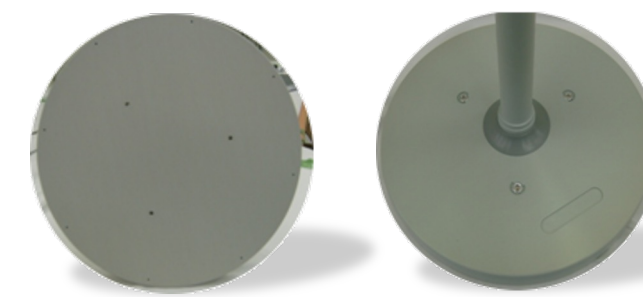
8" WXZ



PLUS TXZ 8"

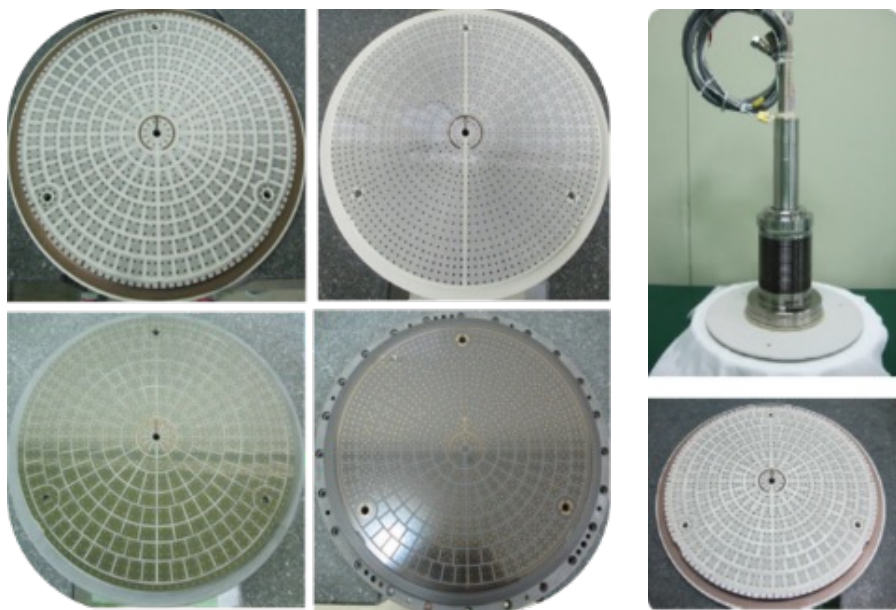
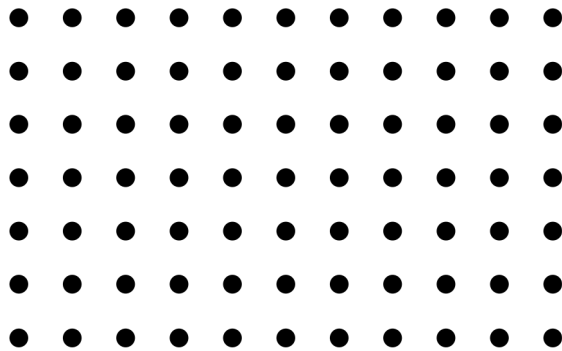


CPR 8"

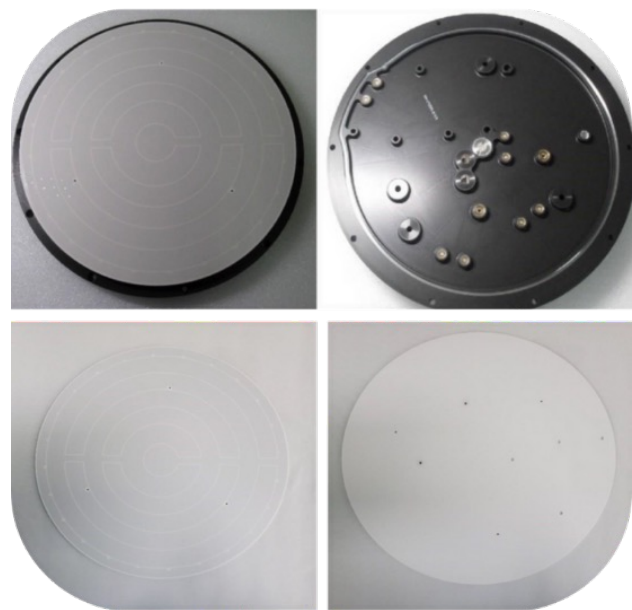


ATTO 8" 12"

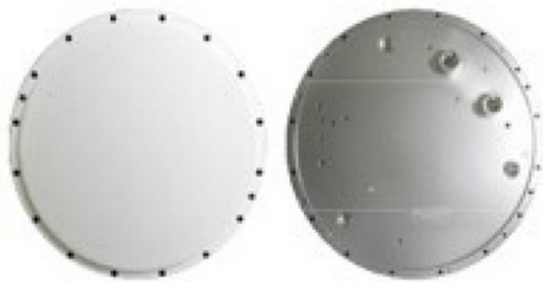
SEMI Parts - 8" & 12" ESC



12" AMAT MCA High & Low Temp ESC(Repair)



12" LAM Al2O3 Plate type



12" AMAT DPS



12" TEL RK&LK & NV

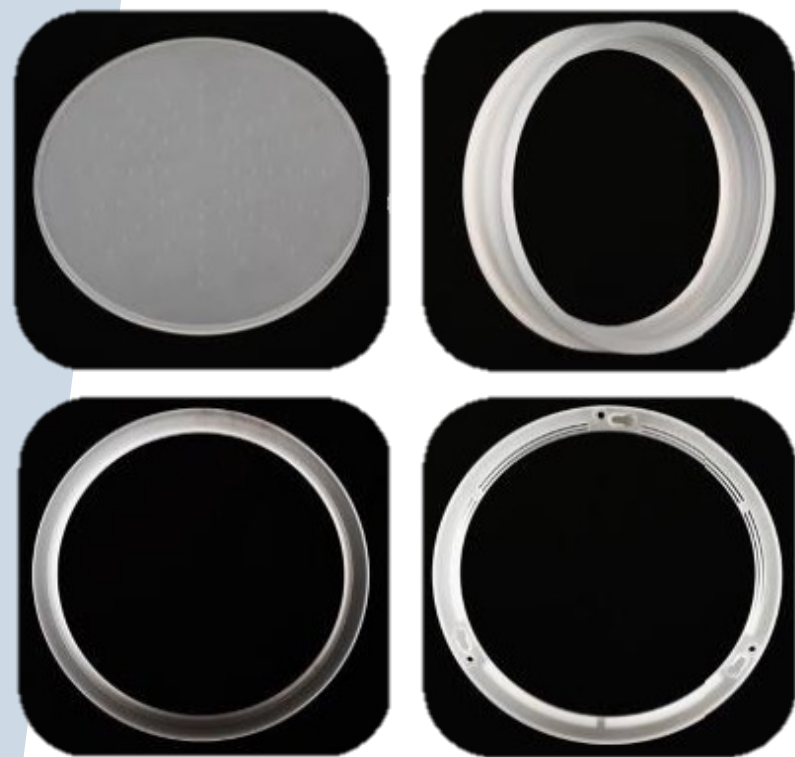
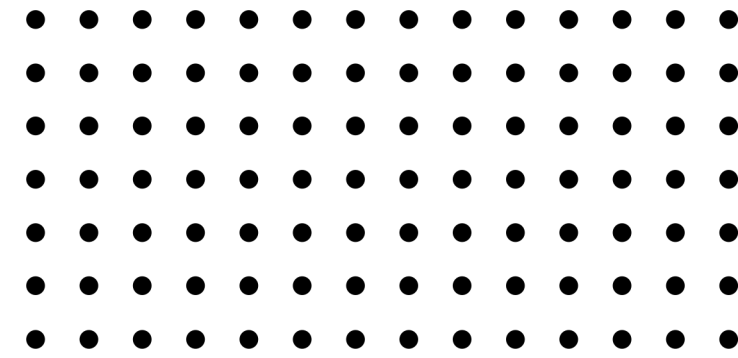


12" AMAT Producer



12" AMAT E-MAX

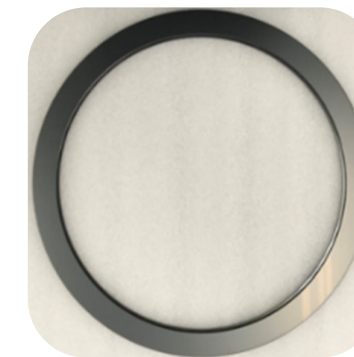
SEMI Parts- Quartz & Silicon & SIC



12" & 8" Quartz parts



12" & 8" Si Cathode & Ring



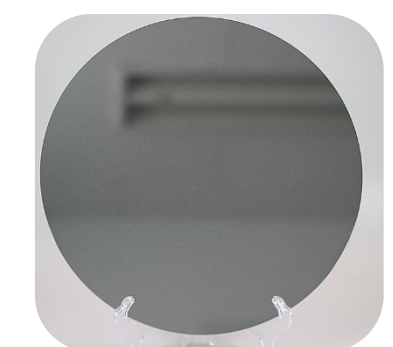
CVD SIC ring



Focus ring

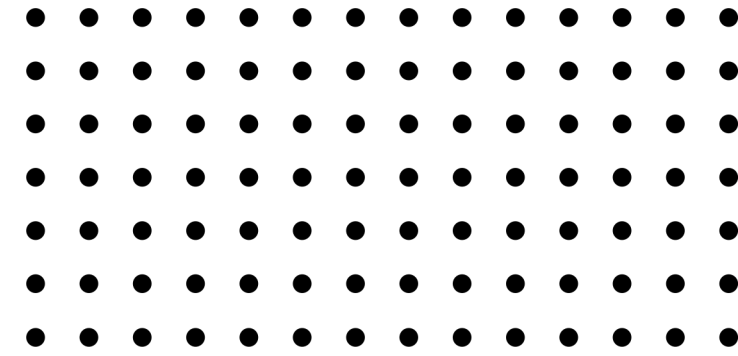


Outer cel

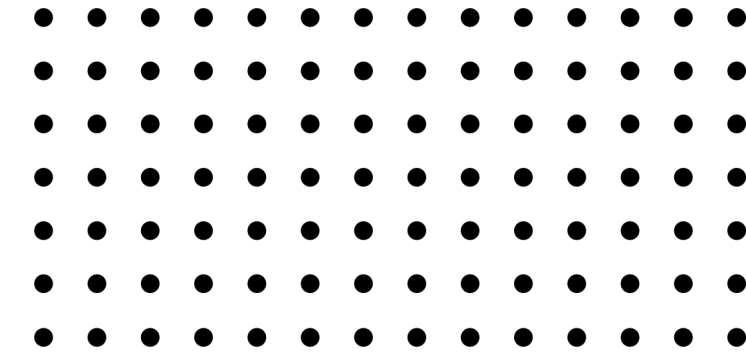


Inner cel

SEMI Parts- Ceramic



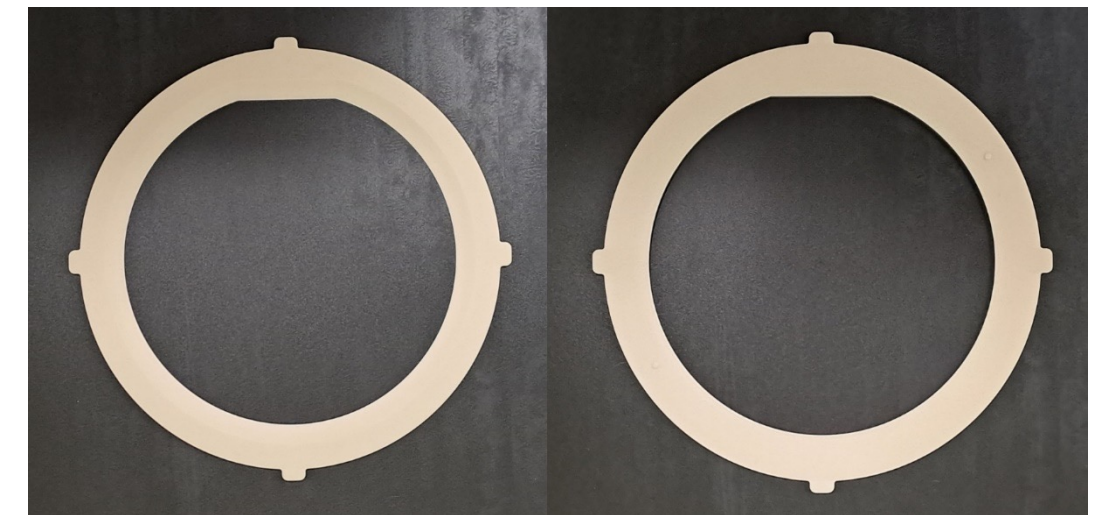
SEMI Parts- ALN & Y2O3



DXZ COVER PLATE 0200-36629



AIN BRACKET NOZZLE



SHADOW RING_0200-04302

LCD/AMOLED Parts- Lamp & Clamp & Other



Grounding line(鋁/鎳鉻合金)



Display Parts-Pad



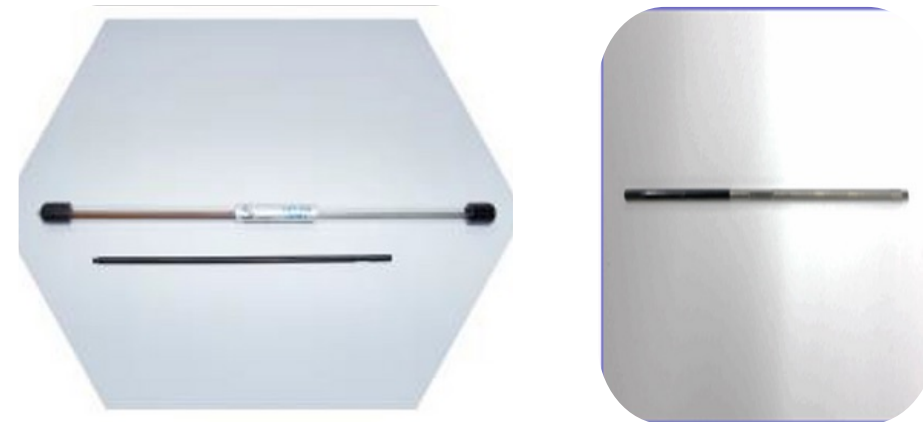
液晶噴墨頭



Probe Pin



PVD-Clamp



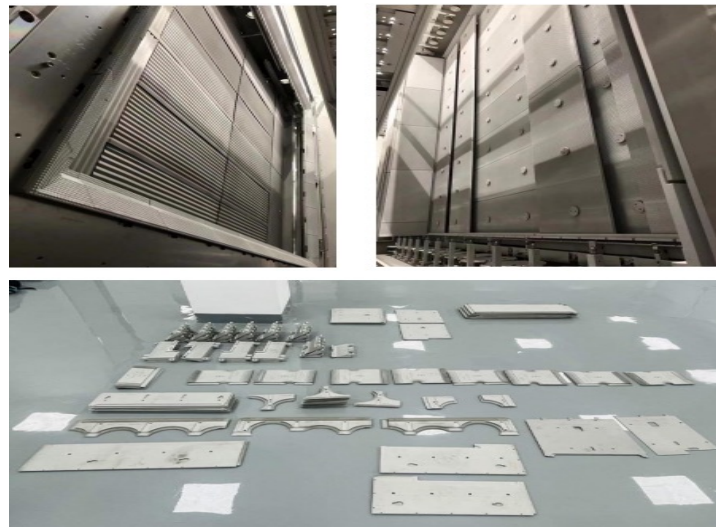
Display Parts-Lift pin



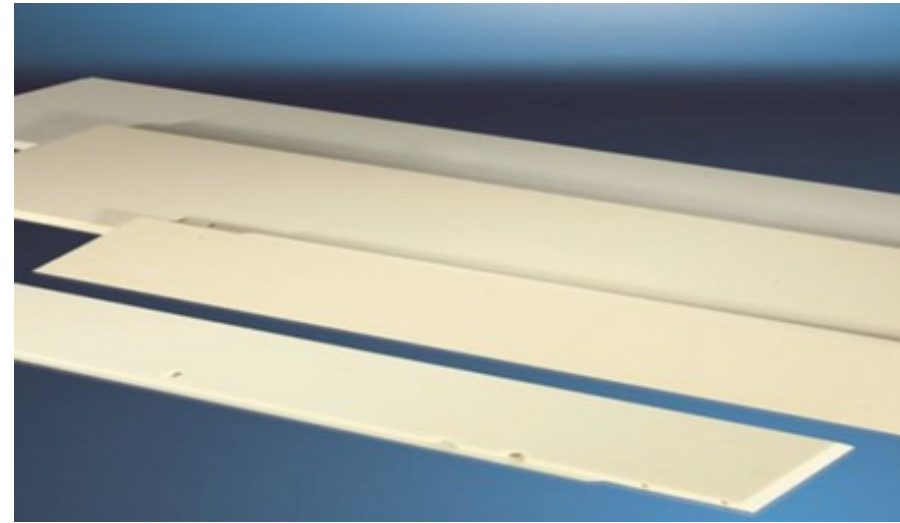
Lighting Lamp



LCD/AMOLED Parts-Ceramic & Mask & Other



PVD-Mask



大型Plate



Golf tee & Bushing set



胶框Svange



Adapter



Carrier Car



CarrierHolder

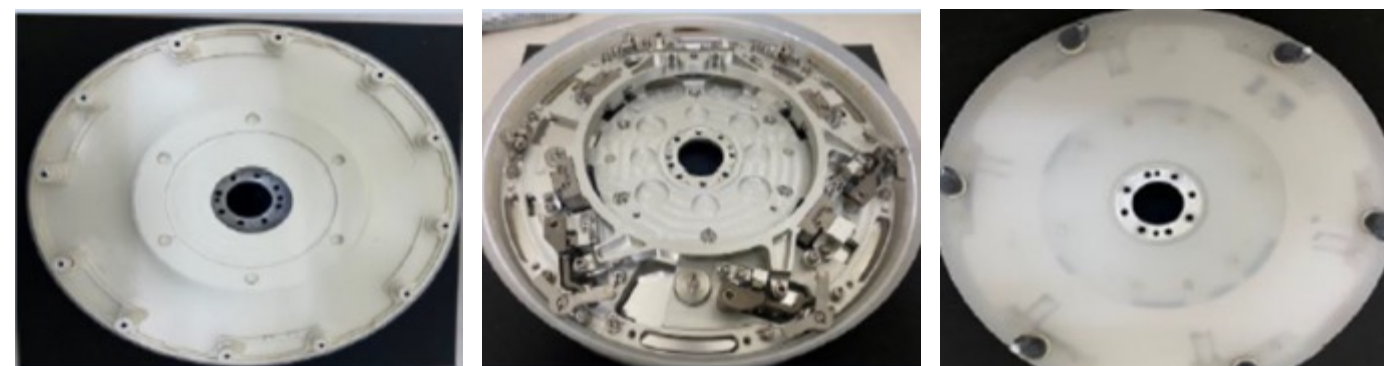
SEMI Maintenance service



CO2 DIW water system



乾式超聲波清潔 Dry Ultrasonic Clean



Spin Chunk



SEMI / LCD / AMOLED Maintenance service

-Chiller



AMAT



NESLAB STEELH...



NESLAB HX-150



NESLAB M33



Julabo FC1600T



NESLAB SYSTEM3



HB-THERM HB-W...



Thermo CUBE



TAITEC CH-800B



EDWARDS TCU4...



ATS DEX-20A



Daikin DI MAX



SMC HRZ001-L-D



SMC HRG001-W-A



SMC H-2000 INR...



Daikin UBRP3AM...



ATS NX-20A-GL



ATS M-PAK

SEMI/LCD/AMOLED Maintenance service

-MB/ RF/ MOTOR/ MKS/VALVES



MOTOR



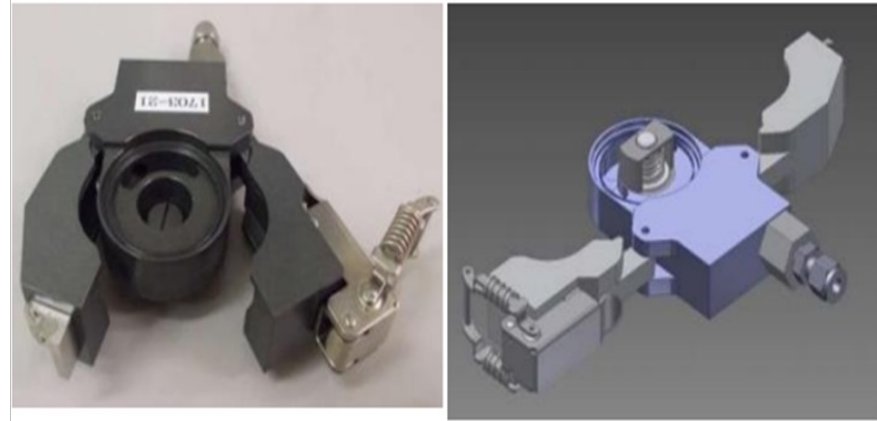
RF Power Supply



MKS RPSC 2~30L

SEMI / LCD / AMOLED Maintenance service

- VALVE / CDU / PUMP 節能



Pump 節能



Gate valve



SDT 突波吸收



CDU/RDU



SEMI / LCD / AMOLED Maintenance service

– Cryo PUMP

Suzuki型	型號系列	Aisin型	型號系列
	A-100 Lseries		SA-08FA-11 series
	A-150 series		SA-10FI-11 series
	A-200 series		SA-12FA-11 series
	A-200F series		SA-06SJ-11 series
	A-250F series		SA-08SJ-11 series
	A-300 series		SA-10SI-11 series
	A-300F series		SA-12SA-11 series
	A-350 series		SA-14SJ-11 series
	A-400 series		SA-16SJ-11 series
	A-550 series		
	A-570 series		
	CTI 型		型號系列
	CT-8		CRYO-U4H
	CT-8F		CRYO-U6H
	OB-8		CRYO-U8H
	CT-10		CRYO-U10H
	OB-10		CRYO-U12H
	CT-250F		CRYO-U16
	OB-250F		CRYO-U20P
	CT-250F		
	CT-400		
	OB-400		



SEMI / LCD / AMOLED Maintenance service

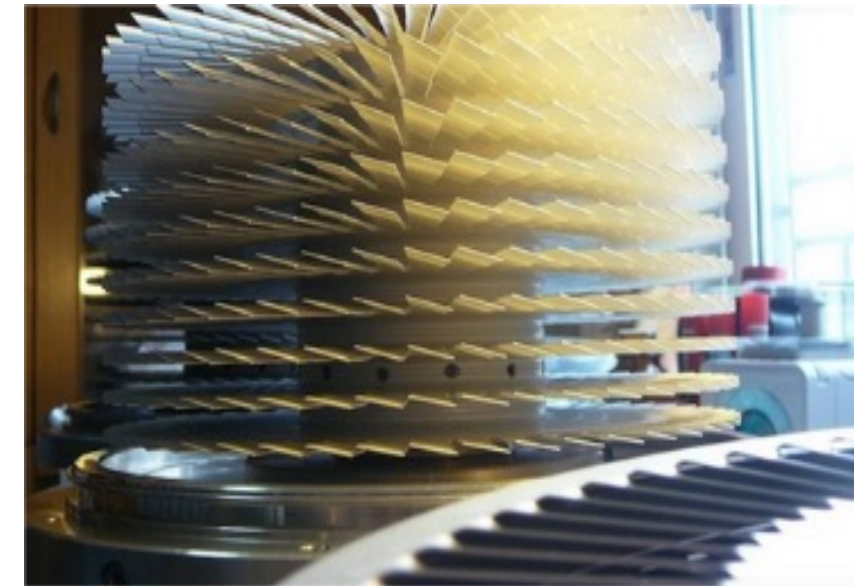
- Turbo PUMP



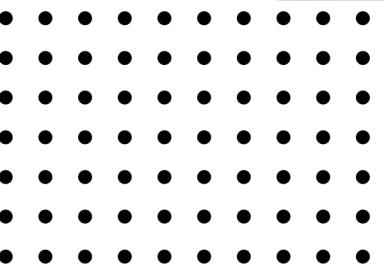
Seiko Seiki Pump



Shimadzu Pump



Mitsubishi Pump



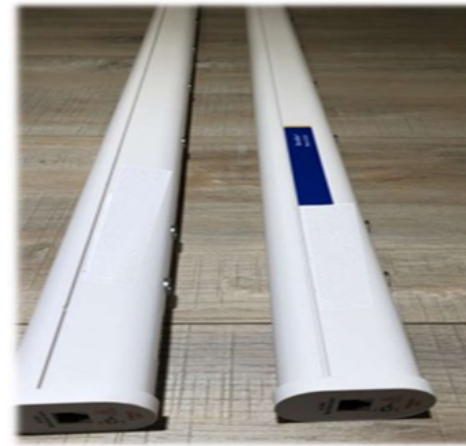
Transformation of equipment and system



AMHS OHT



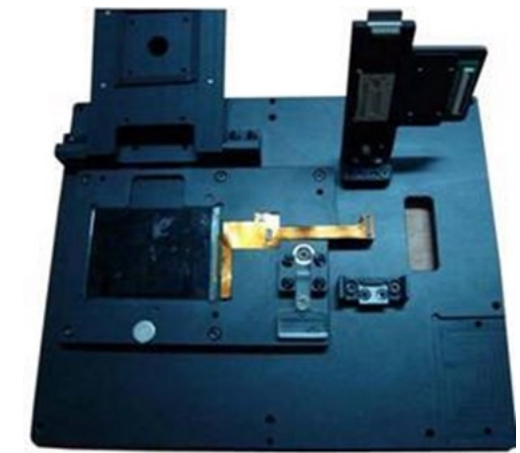
AMHS STK



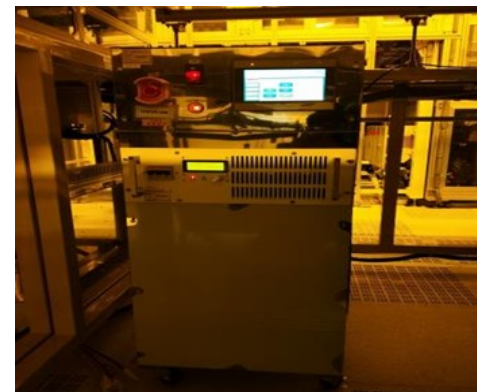
無風離子棒



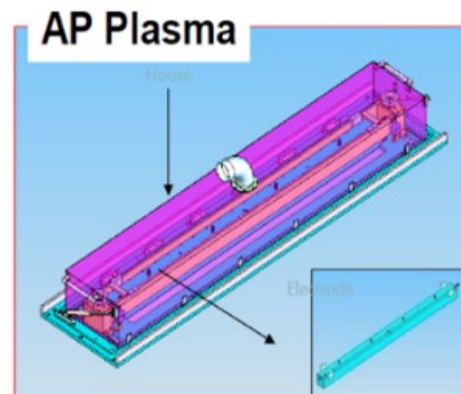
點燈機



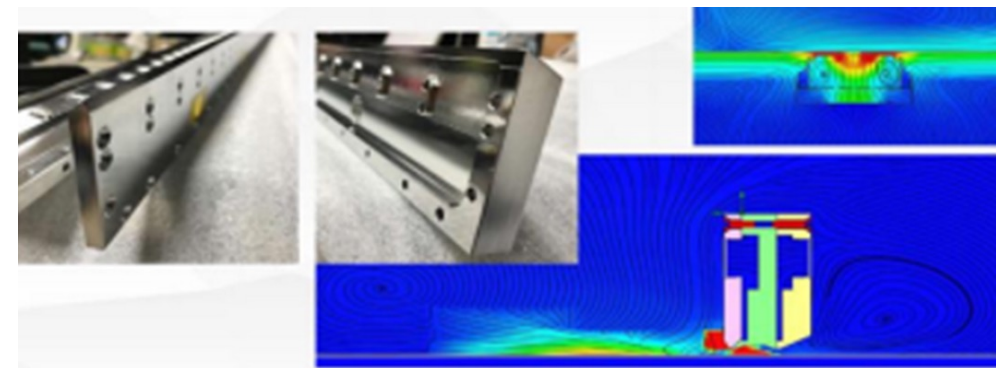
Probe Pin



PVD-Clamp



Display Parts-Lift pin



Lighting Lamp



Total Solution in Water treatment engineering



We Provide:

Water system Evaluation, Basic design, Detail Design, Installation, Testing, Operation and Maintenance.



Service Include:

DI water supply system, Wastewater treatment system, Wastewater Reclaim system.



Application Field:

Include most industry in Semi-conductor, LCD, Solar cell, LED, PCB, Mechanical, Medicine etc.

Water treatment engineering

DI water system

Grade: RO water/
DIW/UPW

- Pre-treat Unit: MMF/ACF/SF
- Further-treat Unit: 2B3T/RO /MB/EDI
- Post-treat Unit: UV/Polisher/MD/UF



RO



MMF+ACF



2B3T



CEDI



UV/Polisher

Water treatment engineering

Wastewater system

- Chemical Reaction Treatment: HF wastewater/As wastewater/Heavy-metal wastewater.
- Bio-treatment: UASB, A/O, MBR, Contact aerator.
- NH₃ treatment: Membrane separation, High-G Stripper, Electrolysis oxidation



HF Batch Reactor



Chemical Sedimentation



High-G stripper



NH₃ Membrane separation unit



As Batch Reactor



UASB



MBR

Water treatment engineering

Wastewater Reclaim system

- Inorganic Wastewater Reclaim: MMF/ACF/UF +RO °
- Organic Wastewater Reclaim : MBR + RO



UF/RO



MMF



MBR- Submerged type



MBR- Tube type



UF

Equipment - Olympus wafer inspection and review system



AW5000



Full Auto

FR3200



Semi Auto

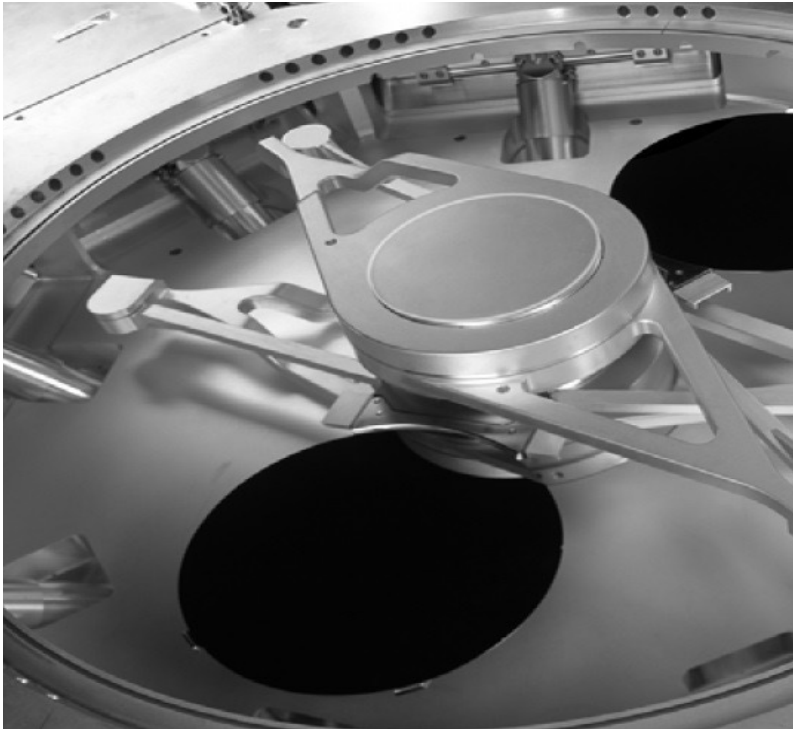
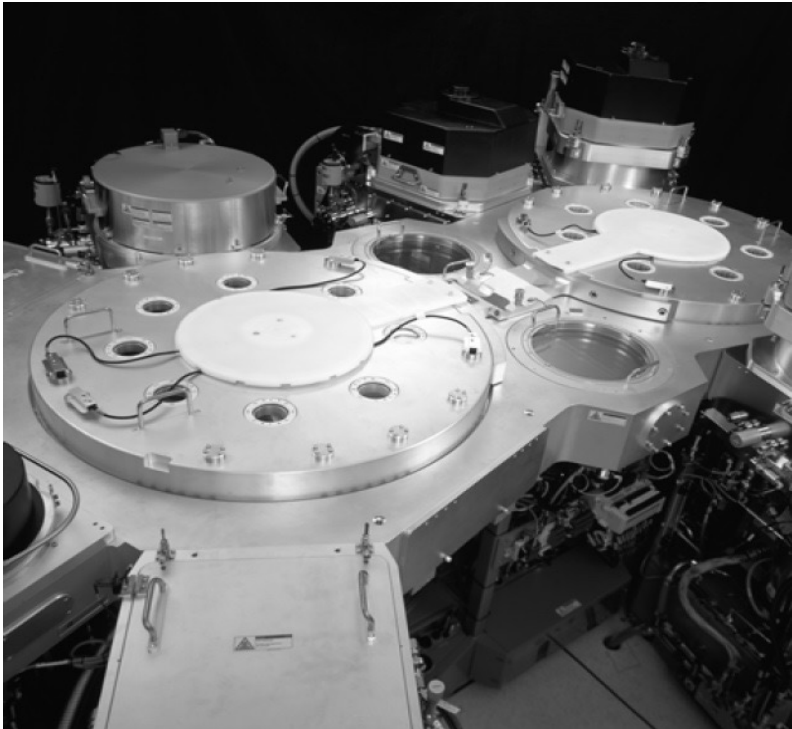
AL3300



Semi Auto

AMAT Robot : XP service

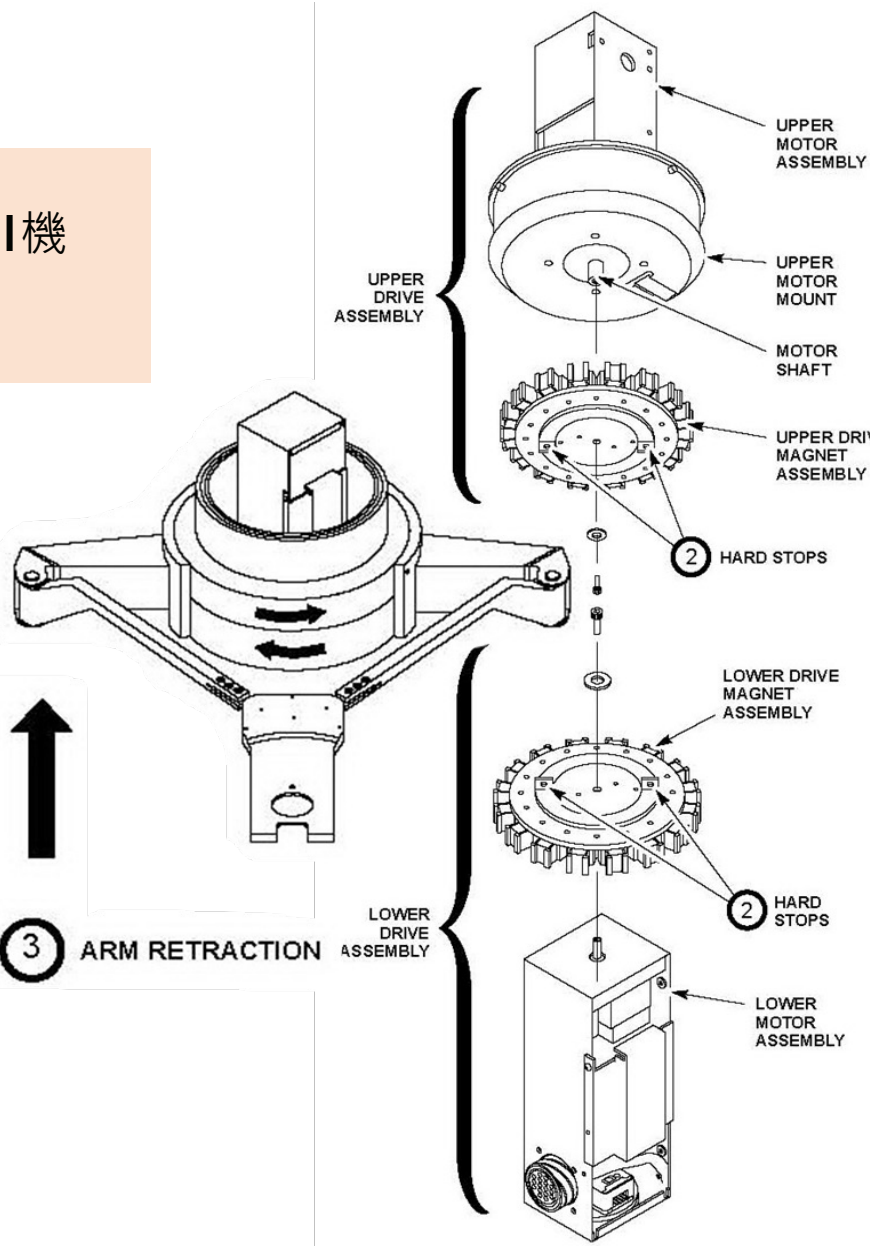
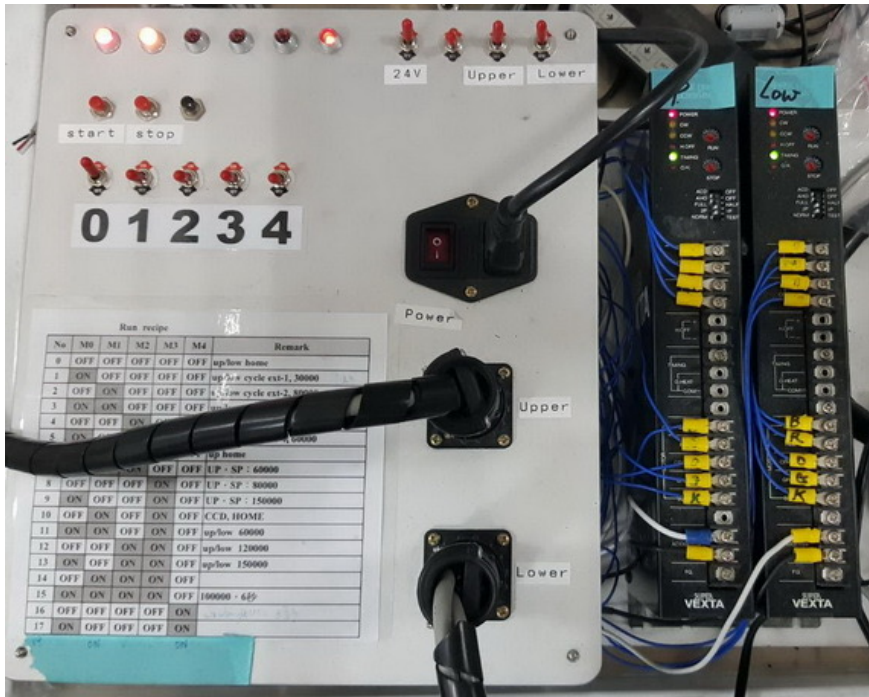
AMAT XP Robot overhaul



XP Robot Service :
1.Overhaul
2.Exchange

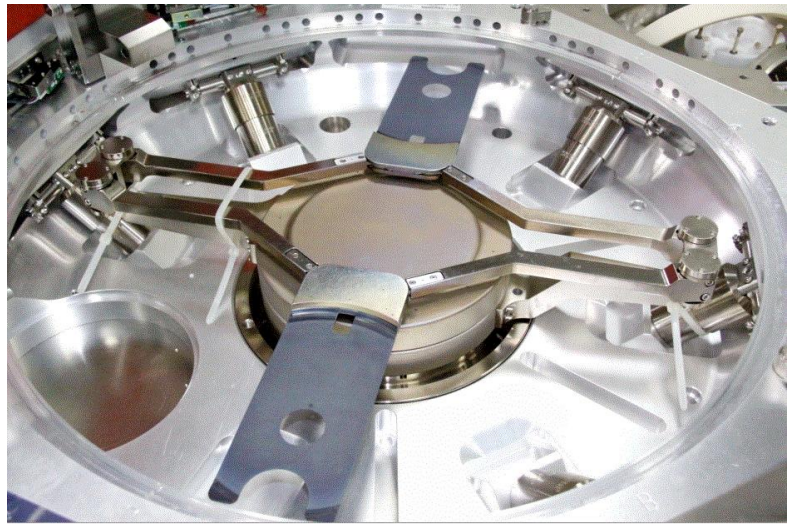
HP Robot測試平台

測試平台可模擬 Applied Material機台robot運行狀態

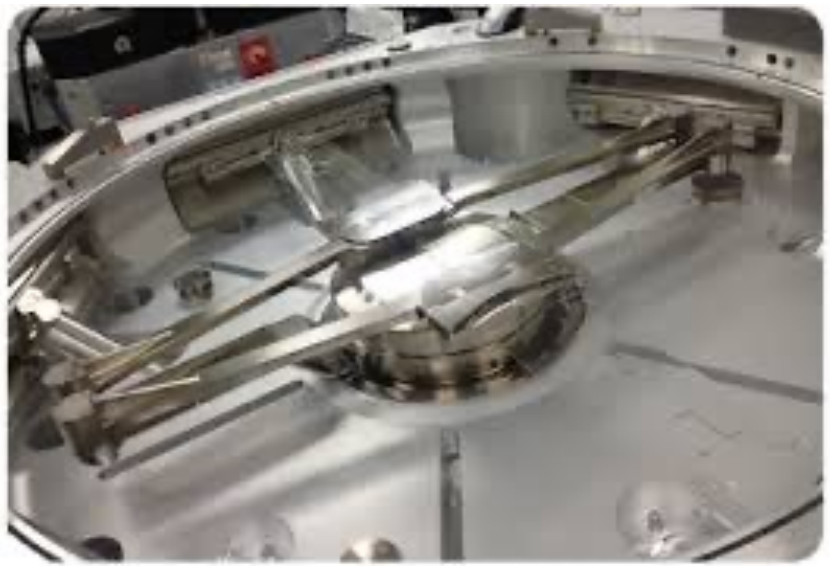


VHP Robot service

VHP Robot Overhaul
Presentation



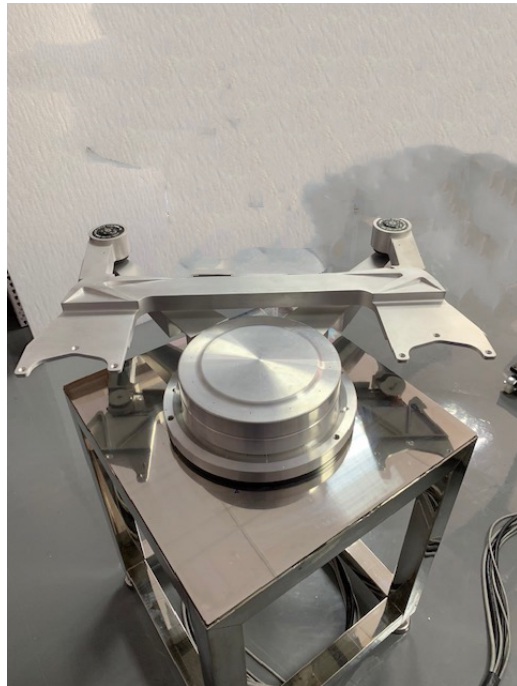
VHP Robot for 200mm &
300mm Tool



VHP Robot Armset



8" Centura type



Producer type



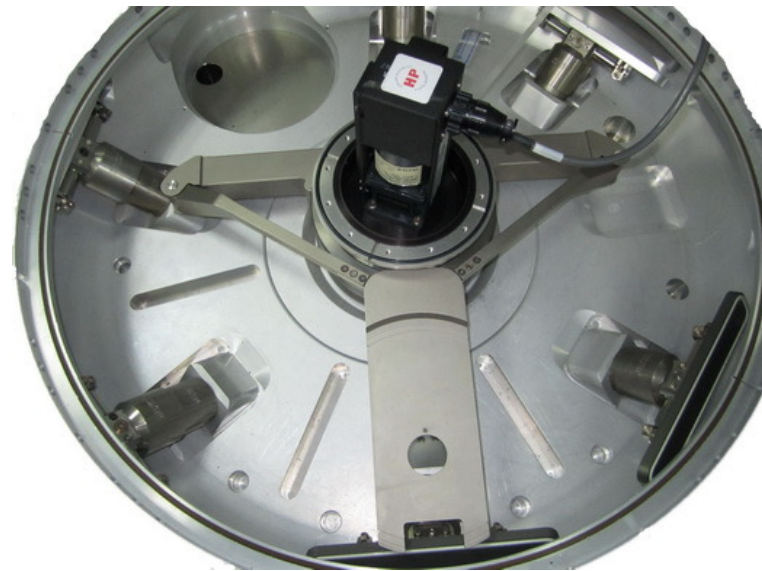
12" ETCH type

200mm tool ~
ETCH AMAT DPS
CVD AMAT HDP
CVD PRODUCER
PVD ENDURA tool
Transfer robot

300mm tool ~
ETCH AMAT EMAX
ETCH AMAT DPS2
CVD PRODUCER

HP Robot service

HP Robot
Introduction



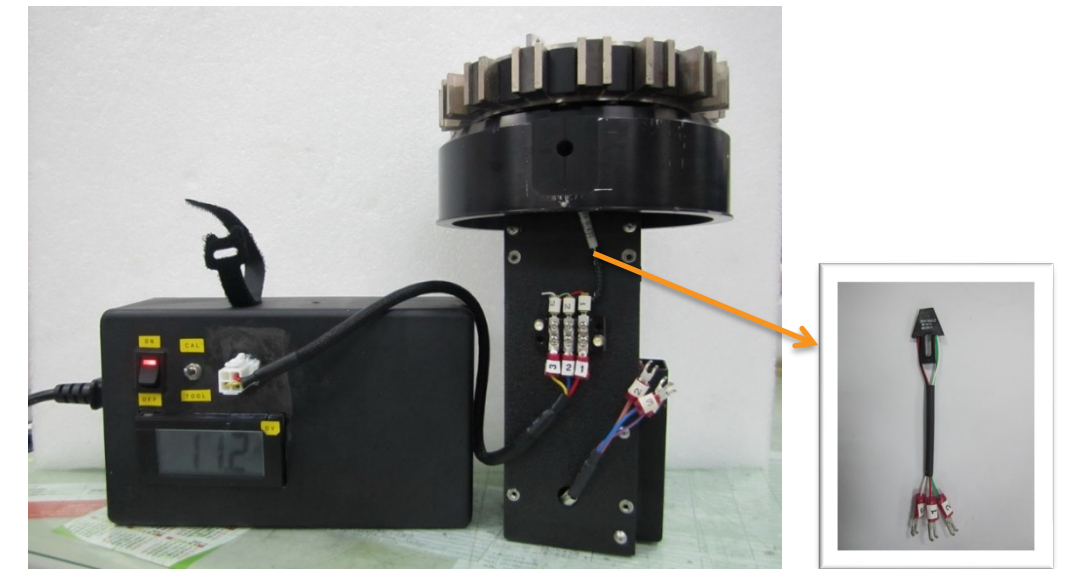
HP Robot Service :
1.Overhaul
2.Exchange

適用機台



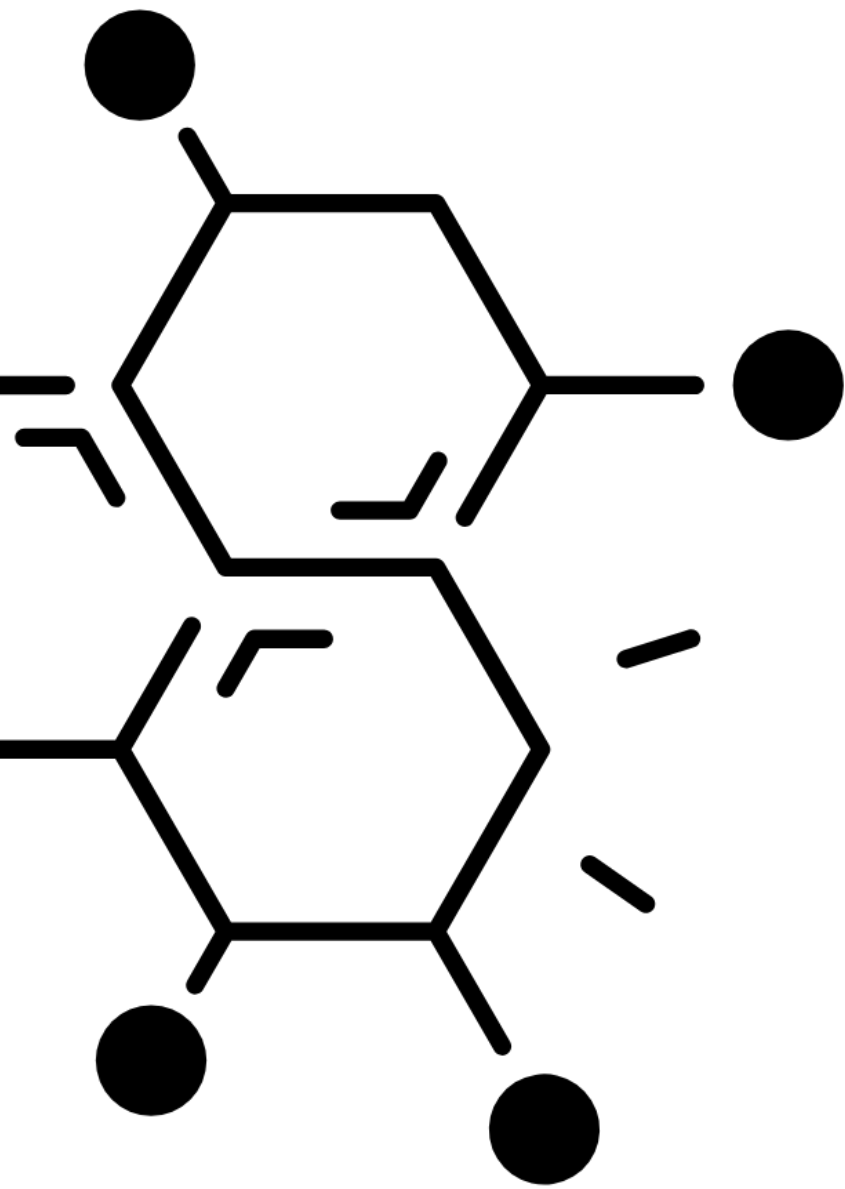
Application : Centura-CVD, Endura- PVD
Etch-Mxp ,Super E ,DPS , HDP
Lead Time : 1~2 weeks
Warranty : 6 months

Adjust home sensor
feedback voltage



Measure sensor feedback voltage after
replace new sensor
Spec: < 1 voltage

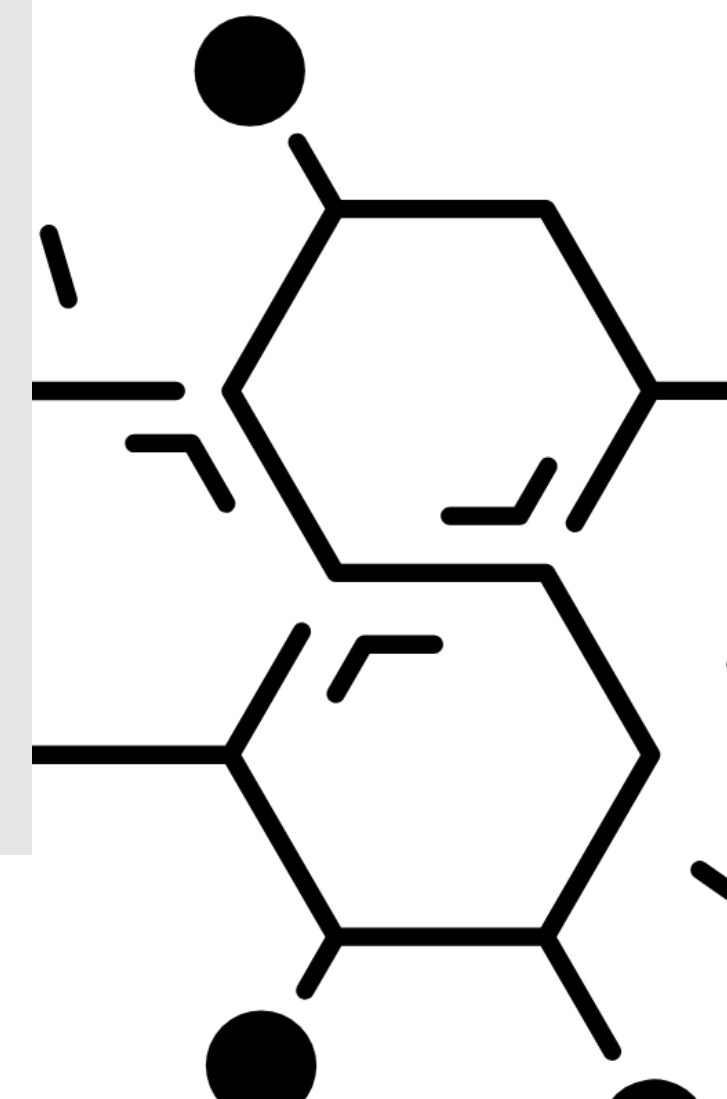
Chemicals



Group	Product name	Target thickness	Characteristic	
Semiconductor	KrF Photoresist	YKP-503	<ul style="list-style-type: none"> Thickness 0.54um (Res. 180nm, 250nm) Implant & Etch Layer 	
		YCKP-1654	<ul style="list-style-type: none"> Thickness 0.54um (Res. 180nm, 250nm) Implant & Etch Layer 	
		AYCKP-7930	<ul style="list-style-type: none"> Thickness 0.30um (Res.180nm) Implant Layer 	
		YKN-510	<ul style="list-style-type: none"> Thickness 0.54um (Res. 180nm, 250nm) Implant & Etch Layer 	
		YCKN-4530	<ul style="list-style-type: none"> Thickness 0.30um (Res.180nm) Implant Layer 	
		YCKN-2954	<ul style="list-style-type: none"> Thickness 0.54um (Res. 180nm, 250nm) Implant & Etch Layer 	
	TSV Thick Photoresist	YPP-T6K	6.0um	<ul style="list-style-type: none"> Thickness 6.0um (Res. 6.0um, Contact Hole) i-Line Positive TSV Devices
		AYCKP-9160	6.0um	<ul style="list-style-type: none"> Thickness 6.0um (Res. 5.0nm, Contact Hole) KrF Positive TSV Devices
	BARC	YCB-240	0.024um	<ul style="list-style-type: none"> Thickness 0.024um TSV package BARC – Ball grid array bumping process
		YA-400	0.04um	<ul style="list-style-type: none"> Thickness 0.04um ArF BARC
		YA-600A	0.06um	<ul style="list-style-type: none"> Thickness 0.06um Gapfill BARC
YA-800		0.08um	<ul style="list-style-type: none"> Thickness 0.08um ArF BARC 	
TARC	YCTA-9047	0.43um	<ul style="list-style-type: none"> Environmentally safe; PFOS/PFOA issue free Low refractive index pH controllable 	

Chemicals

Group	Product name	Target thickness	Characteristic	
Semiconductor	Spin On Carbon Hardmask	YHS-80 / YHS-140 / YHS-330 / AYCHS-2819	0.08um 0.13um 0.33um 0.19um	<ul style="list-style-type: none"> High Tg Low defect density
		YCHS-130 / YCHE-3731 / YCHE-4359 / YCHE-20	0.2um 0.31um 0.59um 2.0um	<ul style="list-style-type: none"> High Tg, High etch resistant Low Fume High carbon content (more than 85 wt%)
		YCHS-3814	0.08um	<ul style="list-style-type: none"> Planarization SOC
		YS-210	0.21um	<ul style="list-style-type: none"> Thickness 0.21um Normal SOC
	CMP	NTS-300	-	<ul style="list-style-type: none"> Slurry for polishing semiconductor SiO₂/Poly/Nitride layer. Alternative of selective/non-selective polishing.
		YCHT-S902 / YCLW-S804		
		SW-300		<ul style="list-style-type: none"> CMP slurry for Tungsten buffing process W Removal Rate: $\geq 30 \text{ \AA}/\text{min}$
		YPCC-2000	-	<ul style="list-style-type: none"> Contamination remove and corrosion control after the CMP process.



SAFETY GUARANTEE



● 廈門泛光云電子科技 ISO 9001



● 廈門泛光云電子科技 ISO 14001



● 光云科技 ISO 9001



● 光云科技 ISO 14001



● 成心科技 ISO 9001



● 危險化學品經營許可證

GLORY SUCCESSFUL Group



SUCCESSFUL HEART
TECHNOLOGY

成心科技股份有限公司



GLORY CLOUDS

光云科技股份有限公司



SUCCESSFUL HEART
VACUUM CO., LTD

成心真空股份有限公司



晶采電子商務股份有限公司
JCI E-commerce

晶采電商股份有限公司



GLORY SUCCESSFUL

- 廈門泛光云電子科技有限公司
- 泛光云科技(江蘇)有限公司



台灣美凱尼斯
股份有限公司



深圳市美凱尼斯
科技有限公司



SHENZHEN
SUCCESSFUL HEART

深圳成心电子有限公司



Thank you.

GLORY SUCCESSFUL