

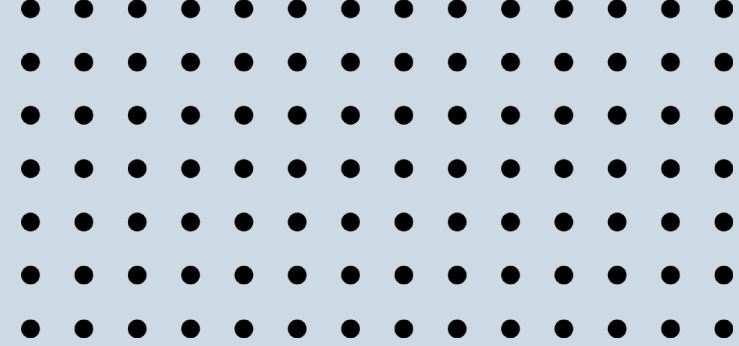


GLORY SUCCESSFUL

泛光云集團

회사소개서





泛光云集團

GLORY SUCCESSFUL

대표이사 : 김상훈 / 구국위

설립일자 :2009.11

자본금: NTD 100,000,000

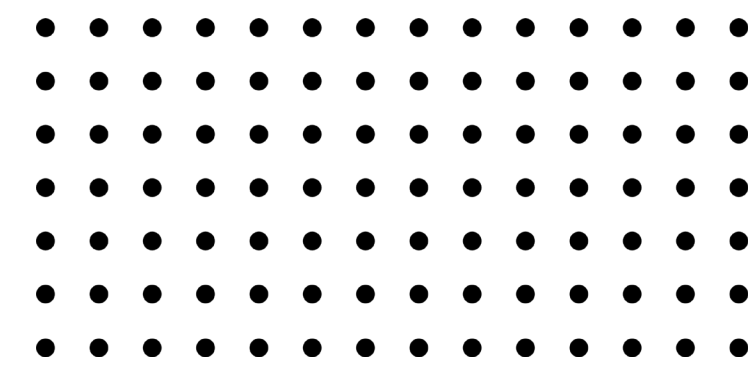
사업분야 : 반도체/Display-Parts 판매&수리, 설비 판매& Modify

사원수 : 130명

대만 본사 주소 :35059 No.38, Qunyi Rd., Zhunan Township,
Miaoli County 350, Taiwan

중국 사업장 주소 :No. 1006, Xinghui Center, Changping
Town, Dongguan City, Guangdong Province

COMPANY HISTORY



2009

- GCT Repair center 설립



2010

- SHT 설립



2011

- CMO/ AUO Vender code
- UMC/ Micron/
Winbond Vender code



2012-2013

- Jiufeng 설립
- AKT OEM Vender code



2014-2015

- SHT 회사 이전
- MECHARONICS SZ 설립
- CSOT/ TIANMA Vender code
- GCT ISO 9001/ 14001 인증
- UMC 12X/ TLURY/
APPLE Vender code



2018-2019

- TSMC Vender code
- GCT Chiller Repair
사업부 신설
- CXMT/ JHICC Vender code
- HKC Vender code



2020

- Water treatment
engineering 설립
- UMCXM Vender code



2021

- Xiamen Office Repair
center 설립
- MECHARONICS SZ
회사 이전
- SHT ISO 9001 인증
- GCITCXM ISO
9001/ 14001 인증





2022-Now

- SHT Turbo & Cryo
PUMP Repair center
설립
- NanJing Office 설립
- TSMC Nanjing/ YMTC
/ CHOT Vender code

LOCATION



TAIWAN

-  Zhunan Headquarters & Repair Center
-  Tainan Office & Chiller Repair Center

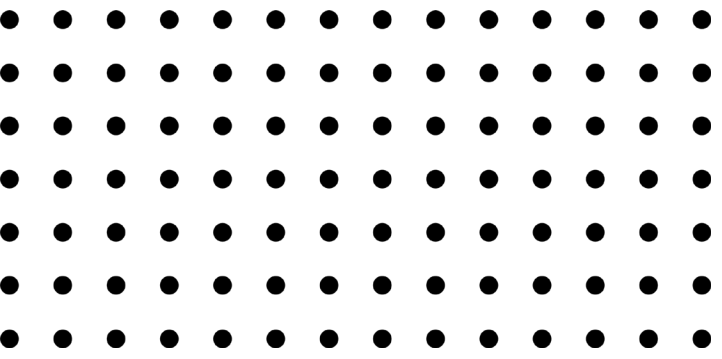
VIET NAM

-  Hanoi office

CHINA

-  Shenzhen Office
-  Xiamen Office & Repair Center
-  NanJing Office & Repair Center
-  ChongQing Office

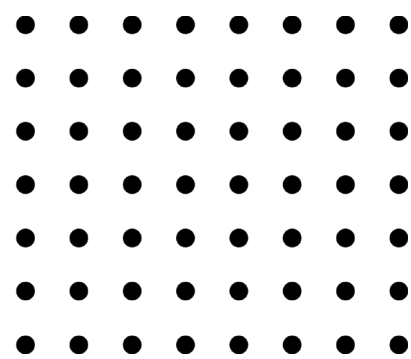
HEADQUARTERS



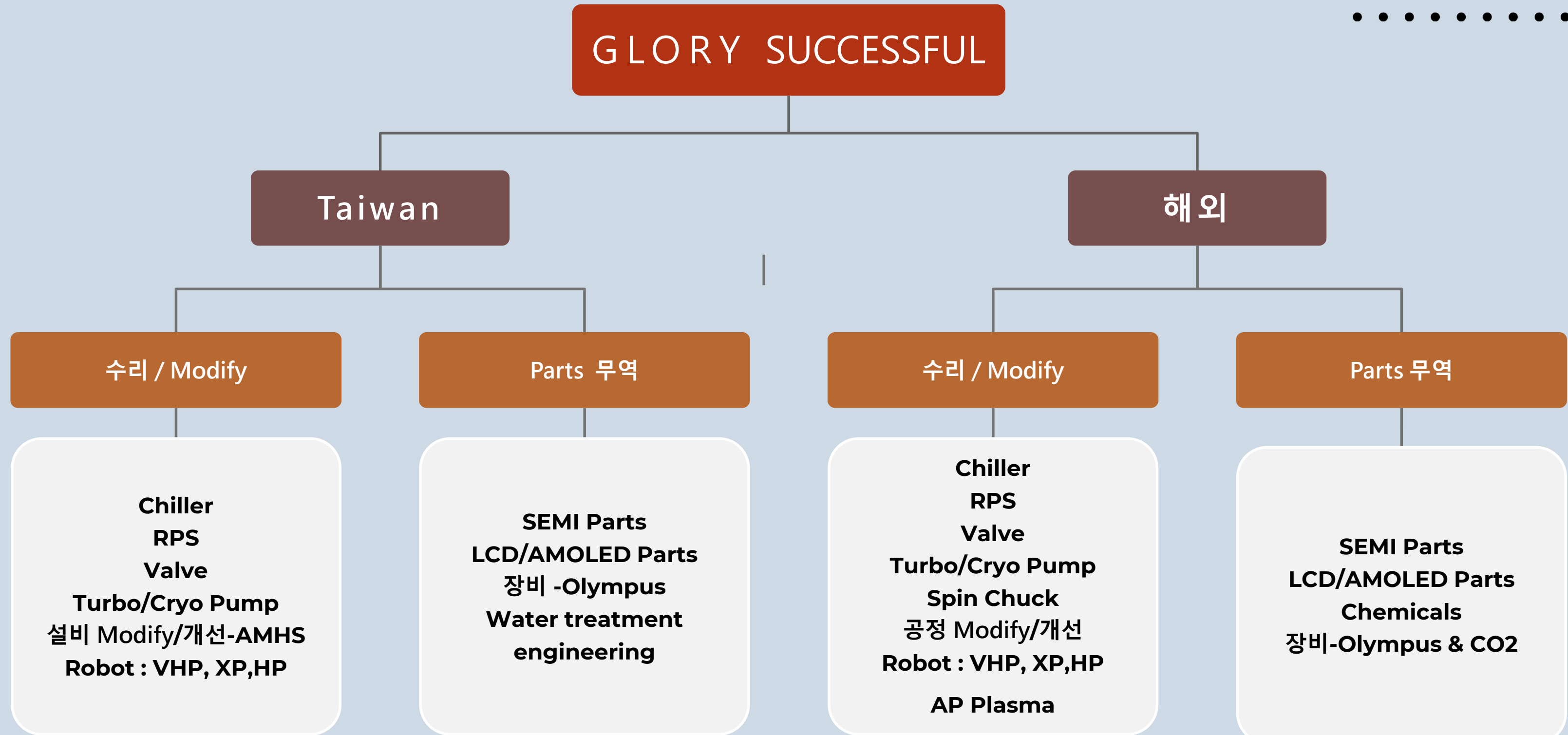
Xiamen Office & Repair Center



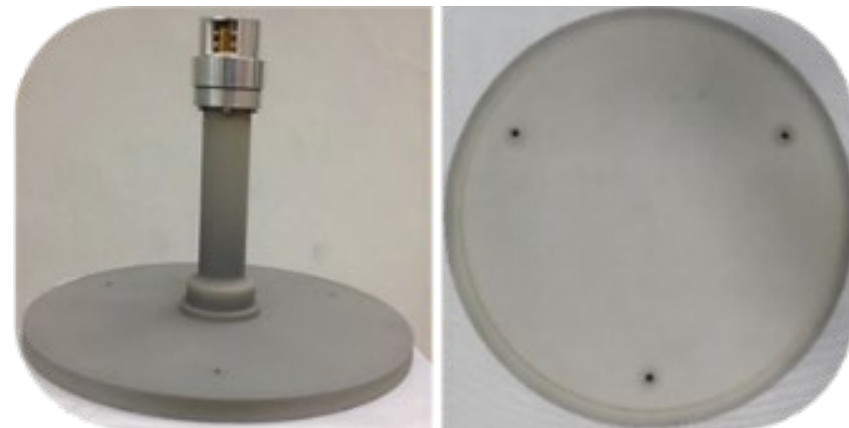
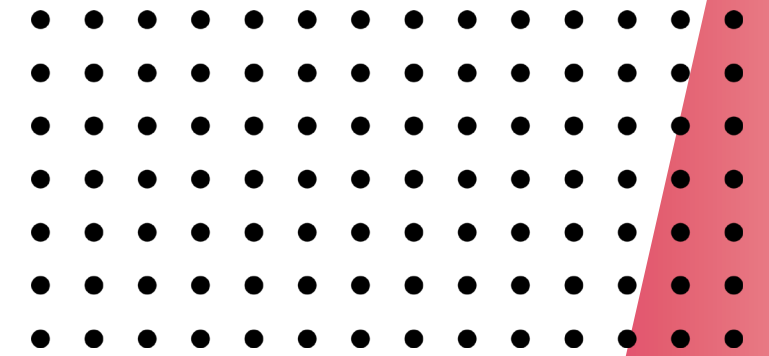
NanJing Office & Repair Center



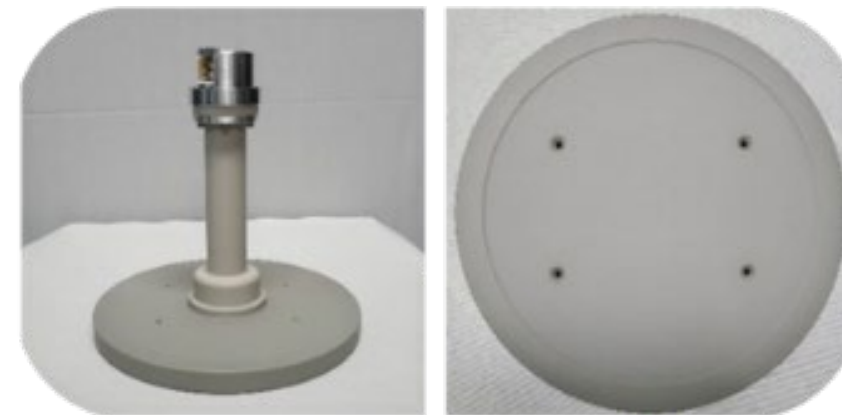
Product applications



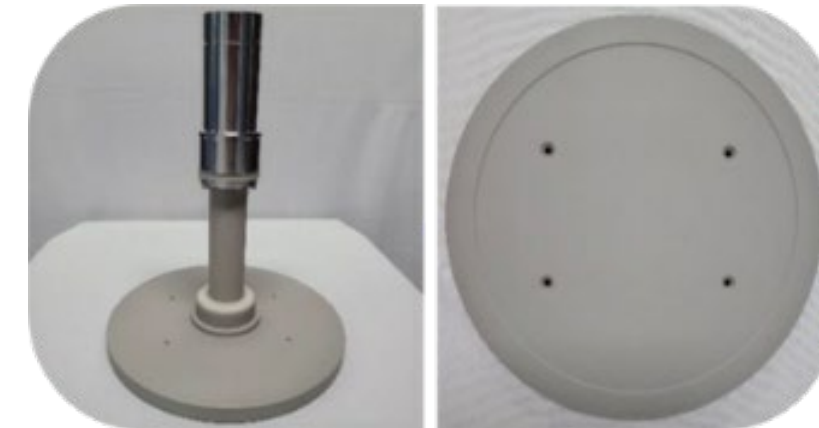
SEMI Parts -AIN Heater



12" AMAT Producer
AIN heater

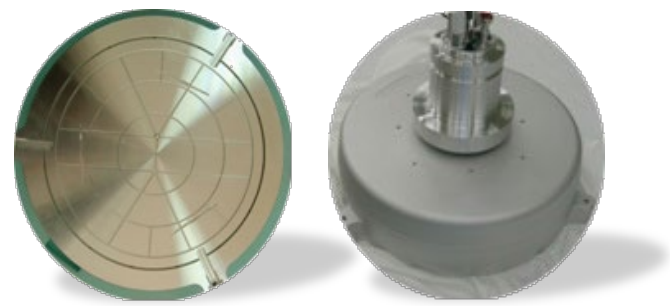
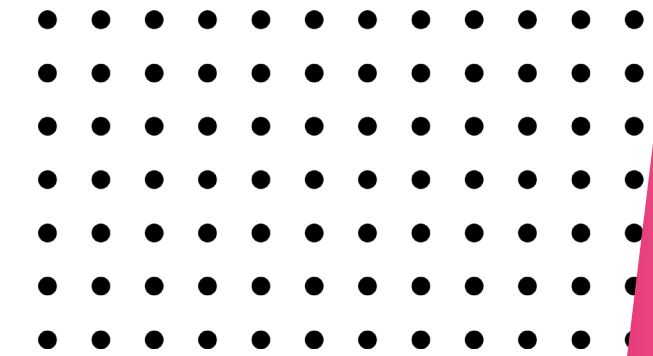


8" AMAT Producer
AIN heater

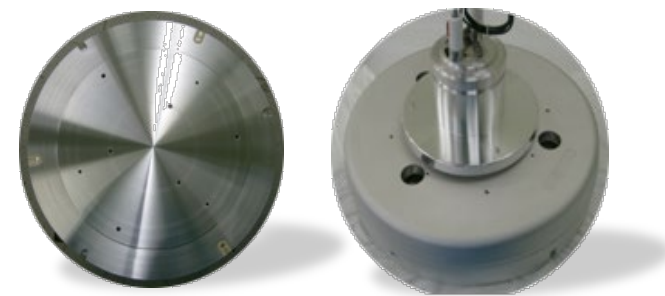


8" AMAT Centura
AIN heater

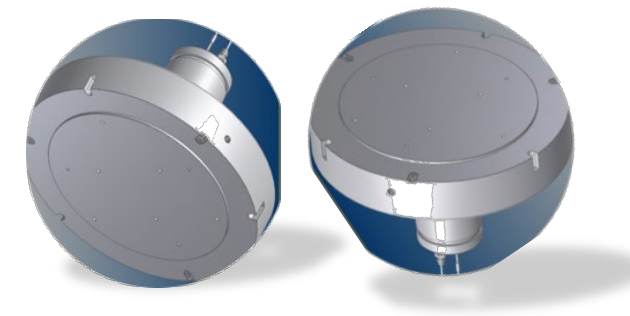
SEMI Parts -Al Heater



Pedestal 12"



CVD Heater 12"



**Vector
Heater 12" AIF extreme**



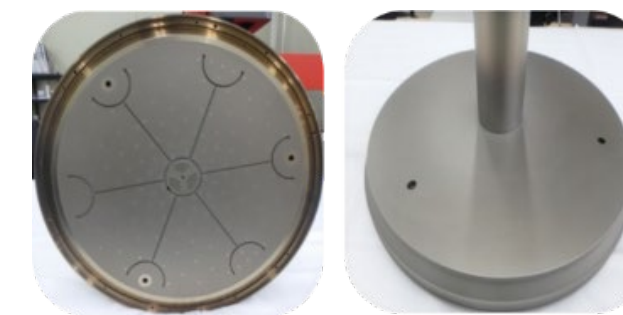
Pedestal 8"



Pedestal 12" ATM

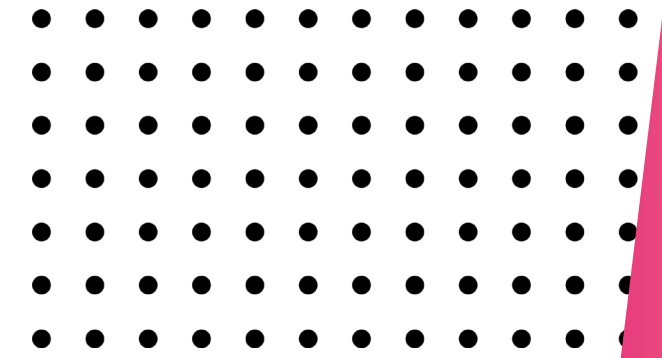


**Vector
Heater 12" Normal
(AIF Coating Type)**

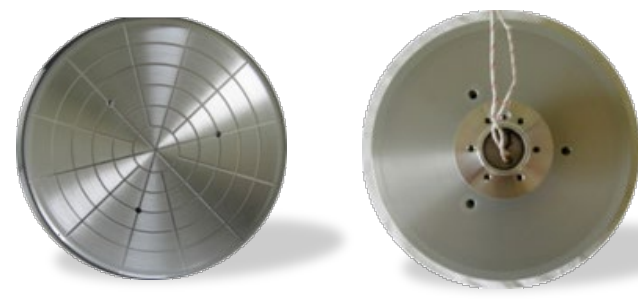


**12" AMAT ENDURA MCA Heater
(0040-91179 / 2nd new/SUS Heater)**

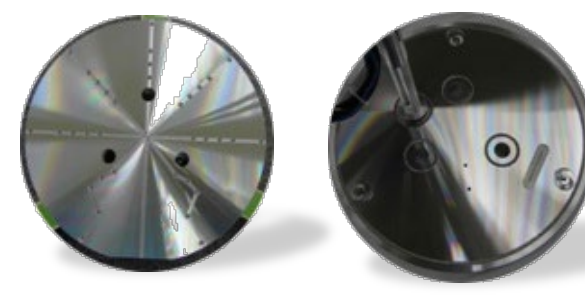
SEMI Parts -Al Heater



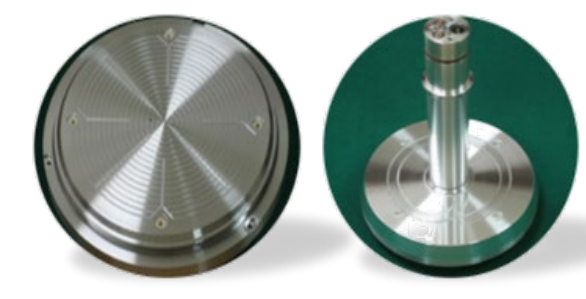
FORGED DXZ 8"



DAS 2000



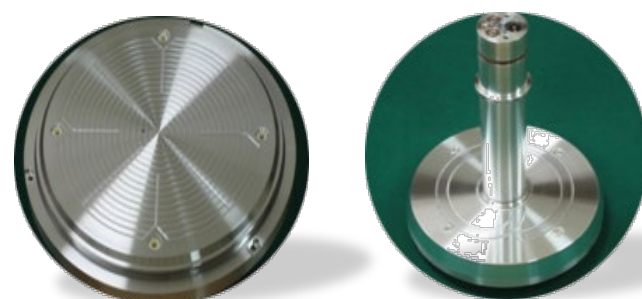
GASONIC 8"



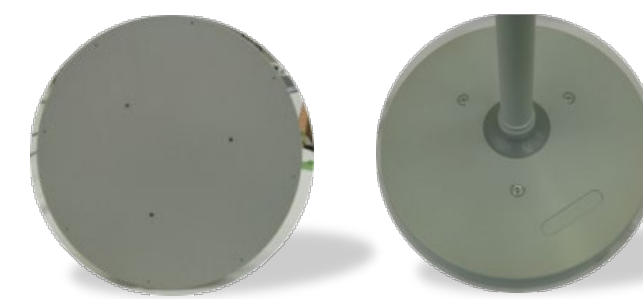
8" WXZ



PLUS TXZ 8"

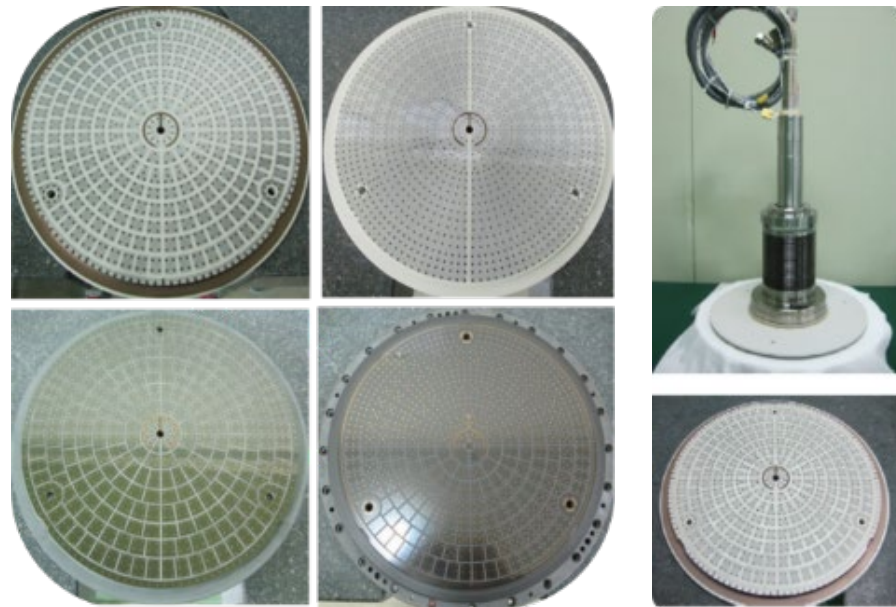
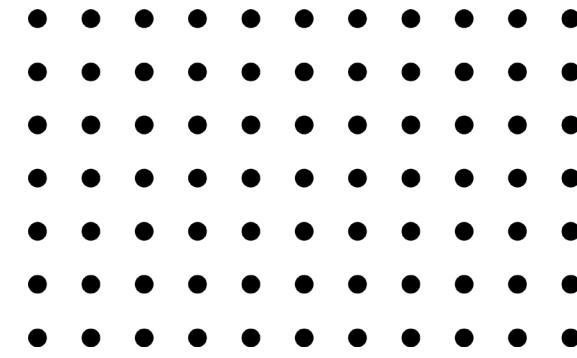


CPR 8"

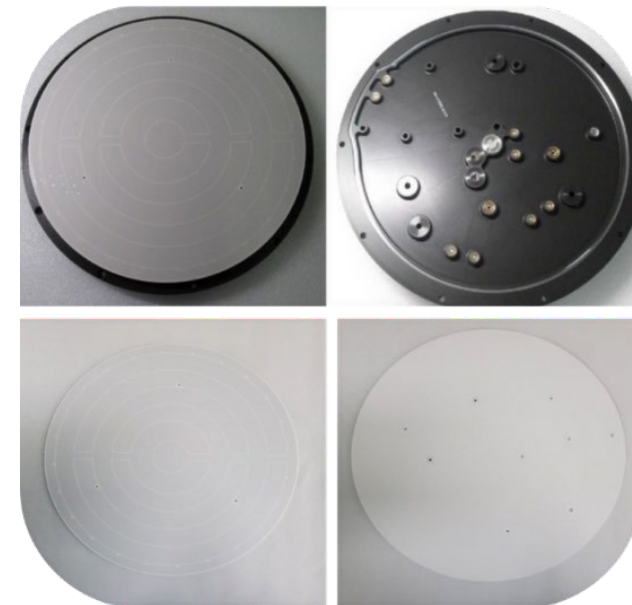


ATTO 8" 12"

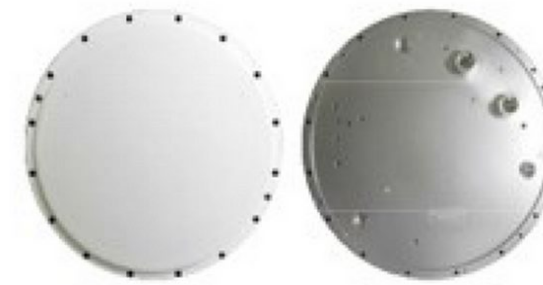
SEMI Parts - 8" & 12" ESC



12" AMAT MCA High & Low Temp ESC(Repair)



12" LAM Al2O3 Plate type



12" AMAT DPS



12" TEL RK&LK & NV

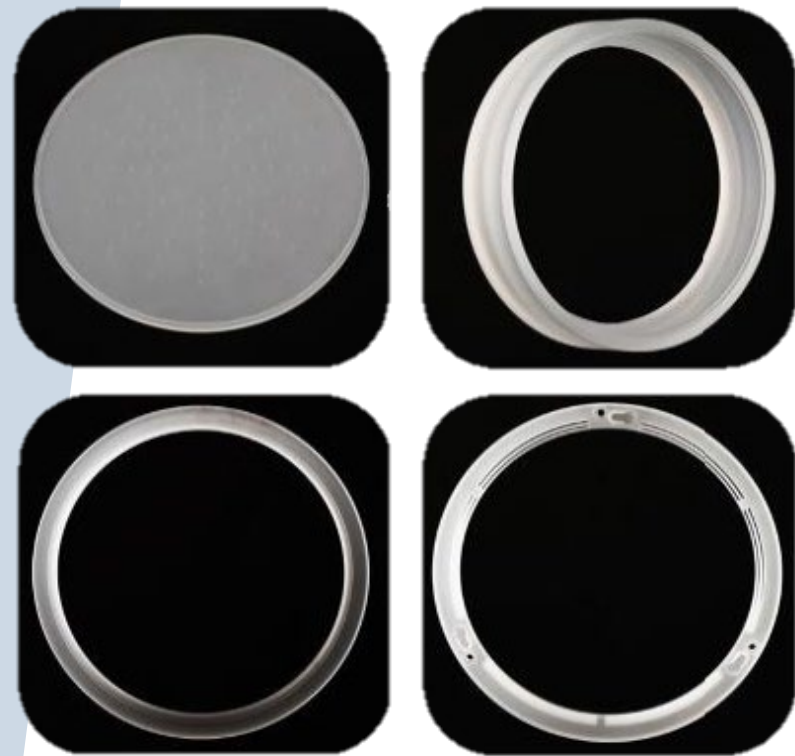
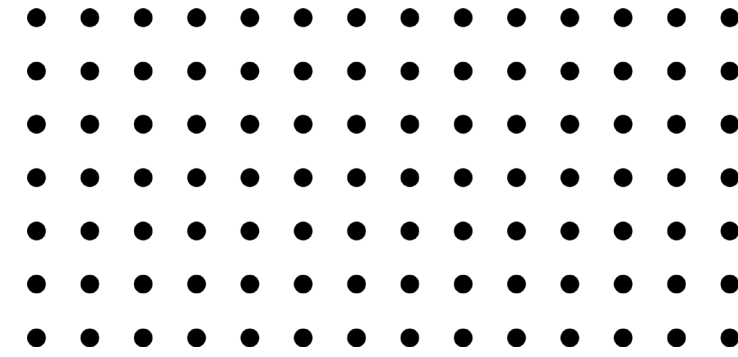


12" AMAT Producer



12" AMAT E-MAX

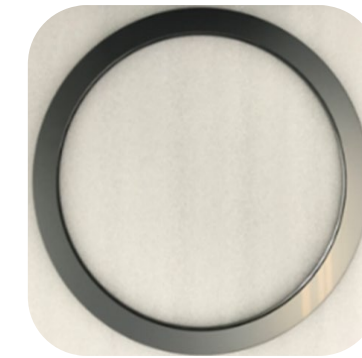
SEMI Parts- Quartz & Silicon & SIC



12" & 8" Quartz parts



12" & 8" Si Cathode & Ring



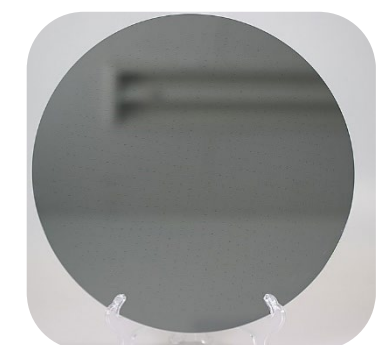
CVD SIC ring



Focus ring

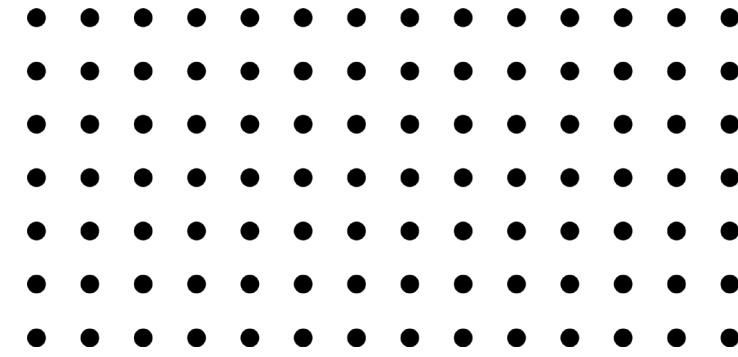


Outer cel

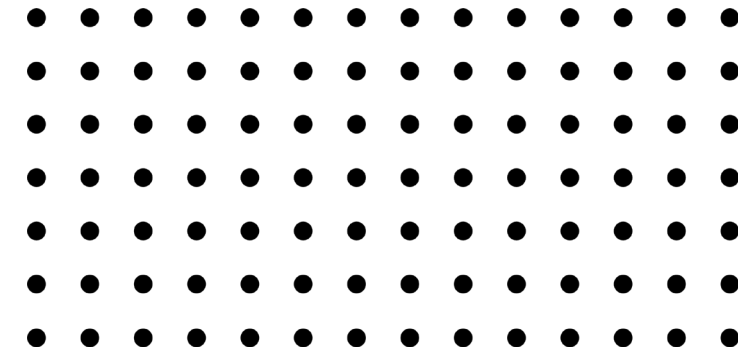


Inner cel

SEMI Parts- Ceramic



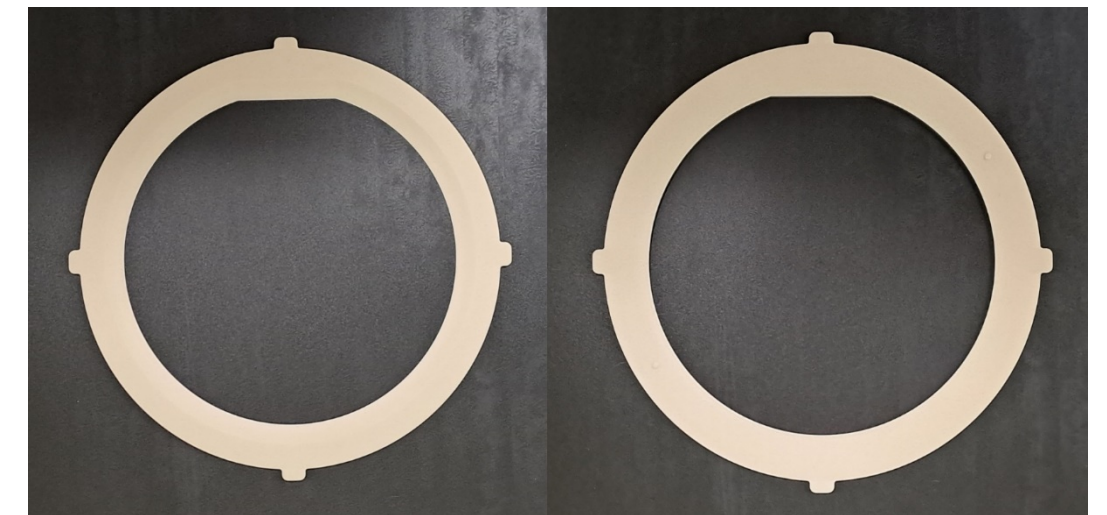
SEMI Parts- ALN & Y2O3



DXZ COVER PLATE 0200-36629



AIN BRACKET NOZZLE



SHADOW RING_0200-04302

LCD/AMOLED Parts- Lamp & Clamp & Other



Grounding line(AL/NiCr 합금)



Display Parts-Pad



액정 잉크젯 헤드



Probe Pin



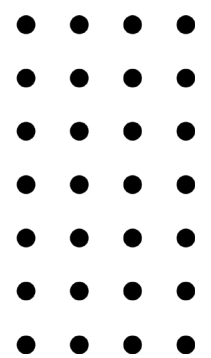
PVD-Clamp



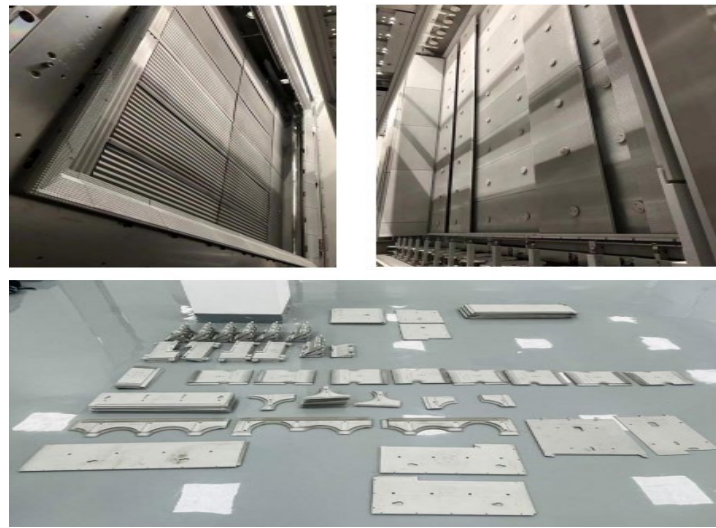
Display Parts-Lift pin



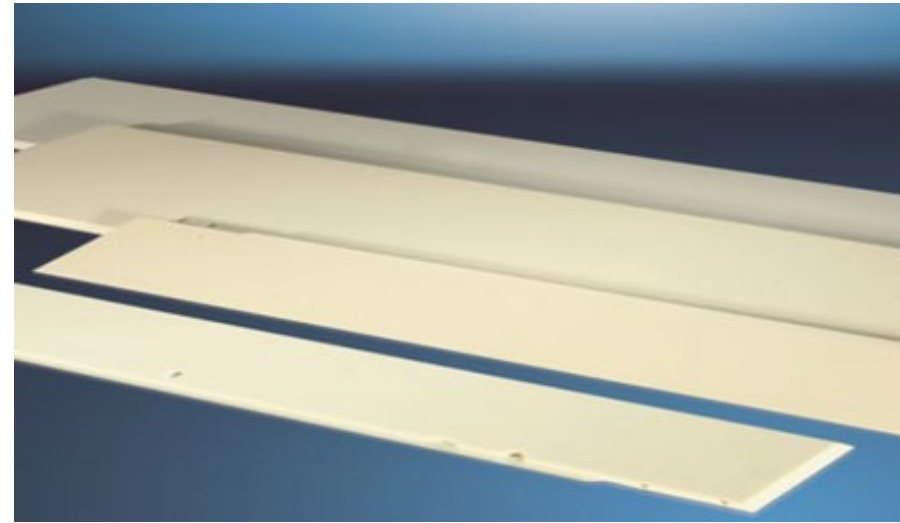
Lighting Lamp



LCD/AMOLED Parts-Ceramic & Mask & Other



PVD-Mask



대형Plate



Golf tee & Bushing set



Dropper Svange



Adapter



Carrier Car

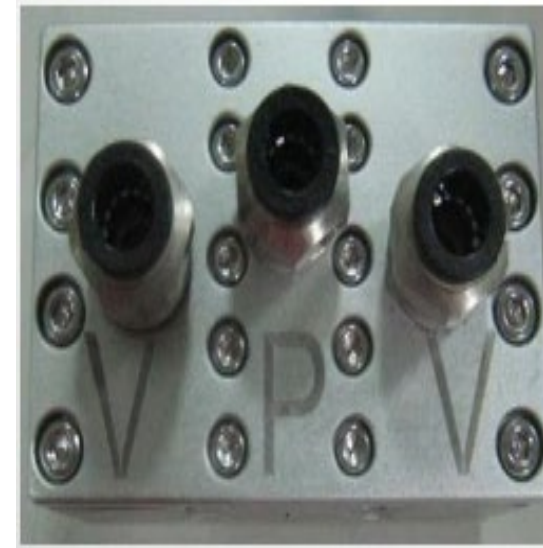


Carrier Holder

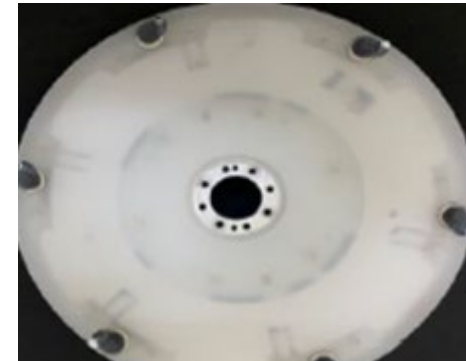
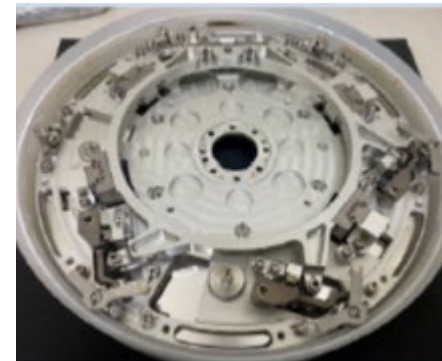
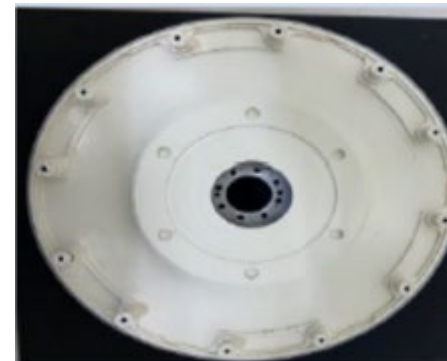
SEMI Maintenance service



CO2 DIW water system



Dry Ultrasonic Clean



Spin Chunk



SEMI / LCD / AMOLED Maintenance service

-Chiller



AMAT



NESLAB STEELH...



NESLAB HX-150



NESLAB M33



Julabo FC1600T



NESLAB SYSTEM3



HB-THERM HB-W...



Thermo CUBE



TAITEC CH-800B



EDWARDS TCU4...



ATS DEX-20A



Daikin DI MAX



SMC HRZ001-L-D



SMC HRG001-W-A



SMC H-2000 INR...



Daikin UBRP3AM...



ATS NX-20A-GL



ATS M-PAK

SEMI/LCD/AMOLED Maintenance service

-MB/ RF/ MOTOR/ MKS/VALVES



Allen-Bradley H-4050-P-H04AA



AMAT 1080-00010 PACIFIC MOTOR



AMAT XBR-2310



AMAT 1080-90184 F1004F MOTOR



AMAT SPIN MOTOR



BAYSIDE GM090-B2D2D



BERGER LAHR



CMC PM SERVO MOTOR



ESR LX420CD



Fuji GYS101DC1-5B-Z95



Mitsubishi HA-FF43B



Mitsubishi HA-FF33B

MOTOR



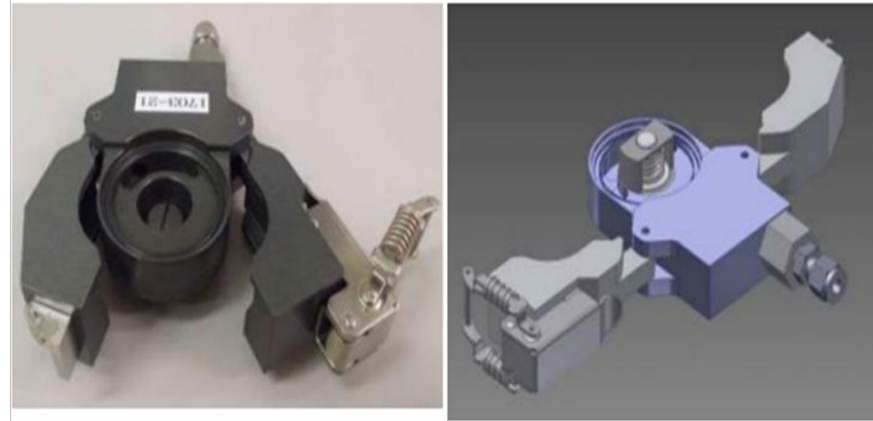
RF Power supply



MKS RPSC 2~30L

SEMI / LCD / AMOLED Maintenance service

- VALVE / CDU / PUMP 에너지 절약



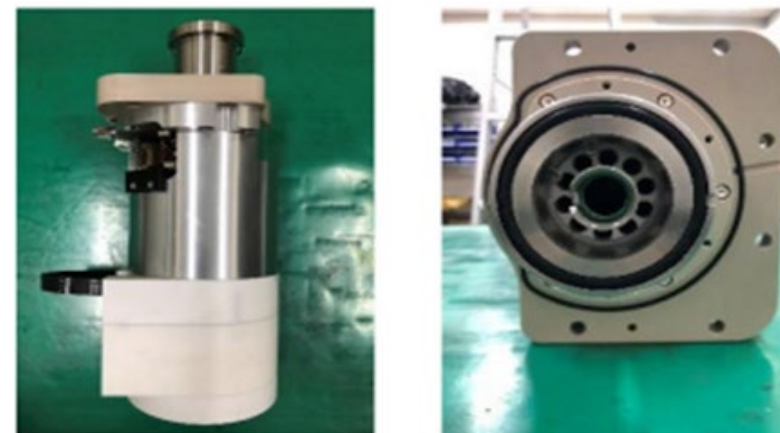
Pump 에너지 절약



Gate valve



SDT Surge Protection



CDU/RDU



SEMI / LCD / AMOLED Maintenance service

- Cryo PUMP

| Suzuki型 | 型號系列 | Aisin型 | 型號系列 |
|---|---------------|--|-------------------|
|  | A-100 Lseries |  | SA-08FA-11 series |
| | A-150 series | | SA-10FI-11 series |
| | A-200 series | | SA-12FA-11 series |
| | A-200F series | | SA-06SJ-11 series |
| | A-250F series | | SA-08SJ-11 series |
| | A-300 series | | SA-10SI-11 series |
| | A-300F series | | SA-12SA-11 series |
| | A-350 series | | SA-14SJ-11 series |
| | A-400 series | | SA-16SJ-11 series |
| | A-550 series | | |
| | A-570 series | | |
| CTI 型 | 型號系列 | ULVAC 型 | 型號系列 |
|  | CT-8 |  | CRYO-U4H |
| | CT-8F | | CRYO-U6H |
| | OB-8 | | CRYO-U8H |
| | CT-10 | | CRYO-U10H |
| | OB-10 | | CRYO-U12H |
| | CT-250F | | CRYO-U16 |
| | OB-250F | | CRYO-U20P |
| | CT-250F | | |
| | CT-400 | | |
| | OB-400 | | |



SEMI / LCD / AMOLED Maintenance service

- Turbo PUMP



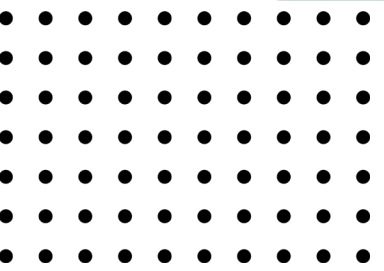
Seiko Seiki Pump



Shimadzu Pump



Mitsubishi Pump



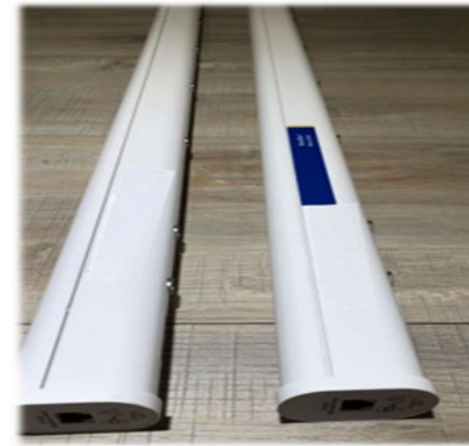
Transformation of equipment and system



AMHS OHT



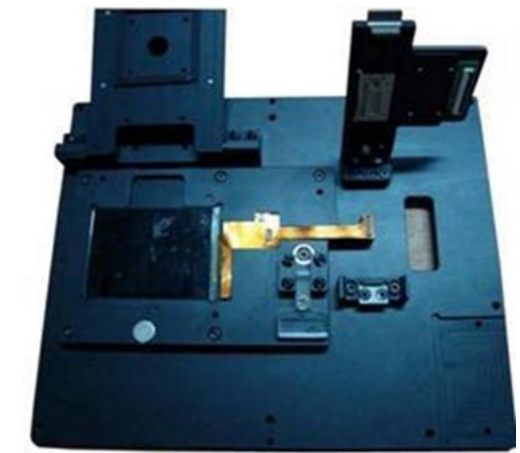
AMHS STK



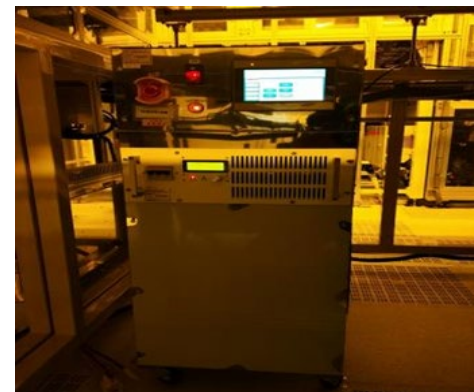
무풍식 이본바



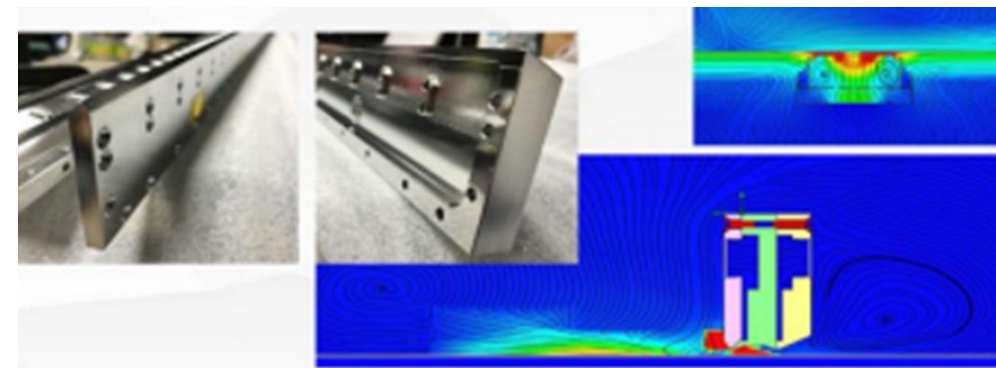
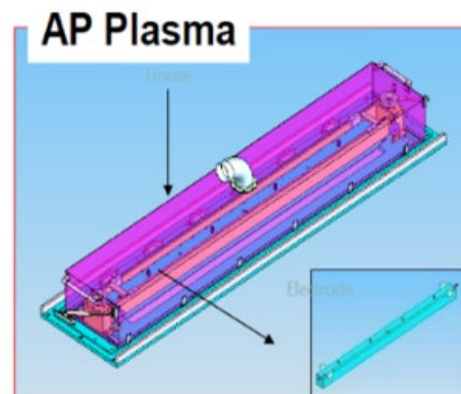
점등기



Probe Pin



PVD-Clamp



Display Parts-Lift pin



Lighting Lamp

Total Solution in Water treatment engineering



We Provide:

Water system Evaluation, Basic design, Detail Design, Installation, Testing, Operation and Maintenance.



Service Include:

DI water supply system, Wastewater treatment system, Wastewater Reclaim system.



Application Field:

Include most industry in Semi-conductor, LCD, Solar cell, LED, PCB, Mechanical, Medicine etc.

Water treatment engineering

DI water system

Grade: RO water/
DIW/UPW

- Pre-treat Unit: MMF/ACF/SF
- Further-treat Unit: 2B3T/RO /MB/EDI
- Post-treat Unit: UV/Polisher/MD/UF



RO



MMF+ACF



2B3T



CEDI



UV/Polisher

Water treatment engineering

Wastewater system

- Chemical Reaction Treatment: HF wastewater/As wastewater/Heavy-metal wastewater.
- Bio-treatment: UASB, A/O, MBR, Contact aerator.
- NH₃ treatment: Membrane separation, High-G Stripper, Electrolysis oxidation



HF Batch Reactor



Chemical Sedimentation



High-G stripper



NH₃ Membrane separation unit



As Batch Reactor



UASB



MBR

Water treatment engineering

Wastewater Reclaim system

- Inorganic Wastewater Reclaim: MMF/ACF/UF +RO °
- Organic Wastewater Reclaim : MBR + RO



UF/RO



MMF



MBR- Submerged type



MBR- Tube type



UF

Equipment - Olympus wafer inspection and review system



AW5000



Full Auto

FR3200



Semi Auto

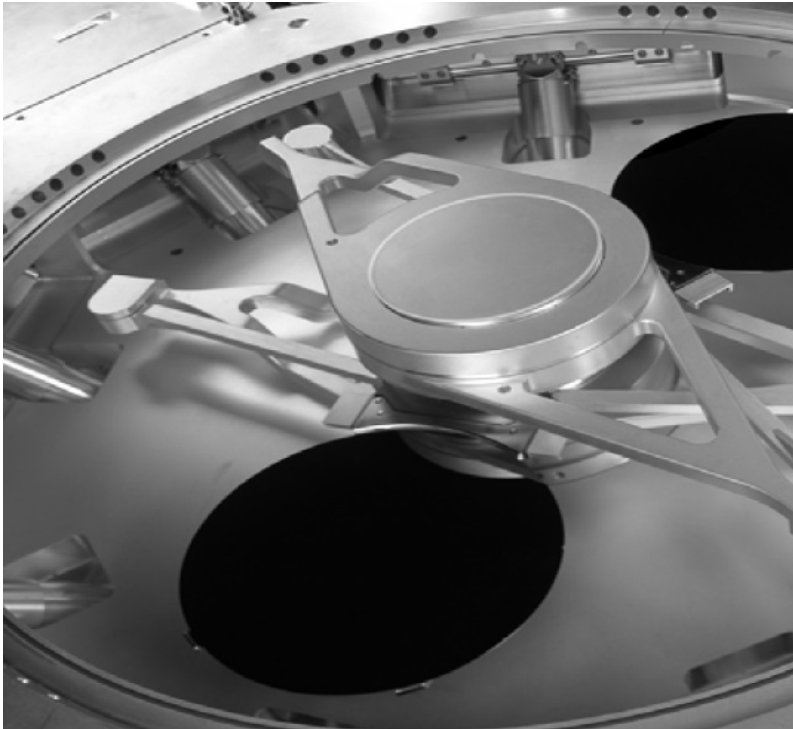
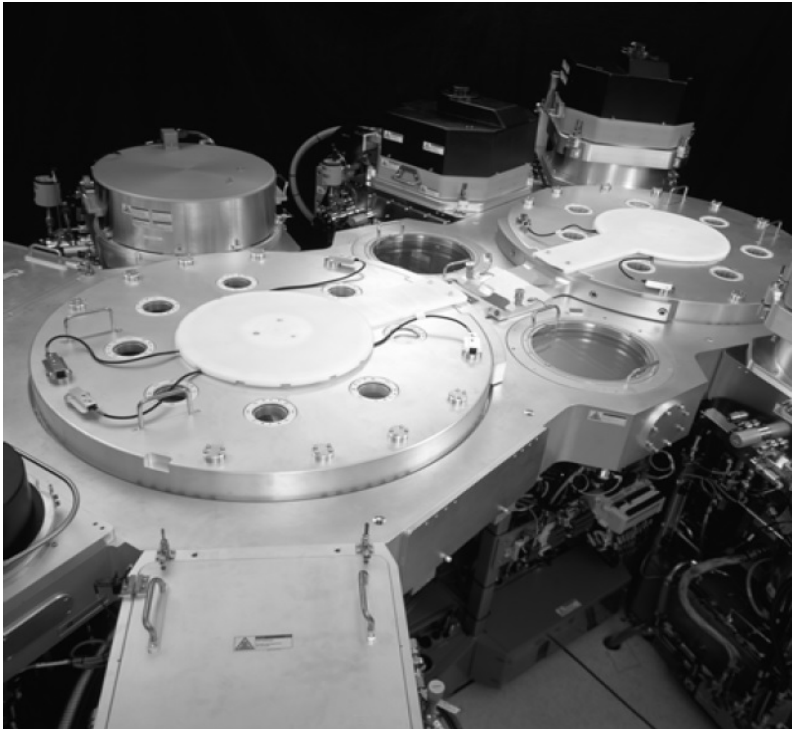
AL3300



Semi Auto

AMAT Robot : XP service

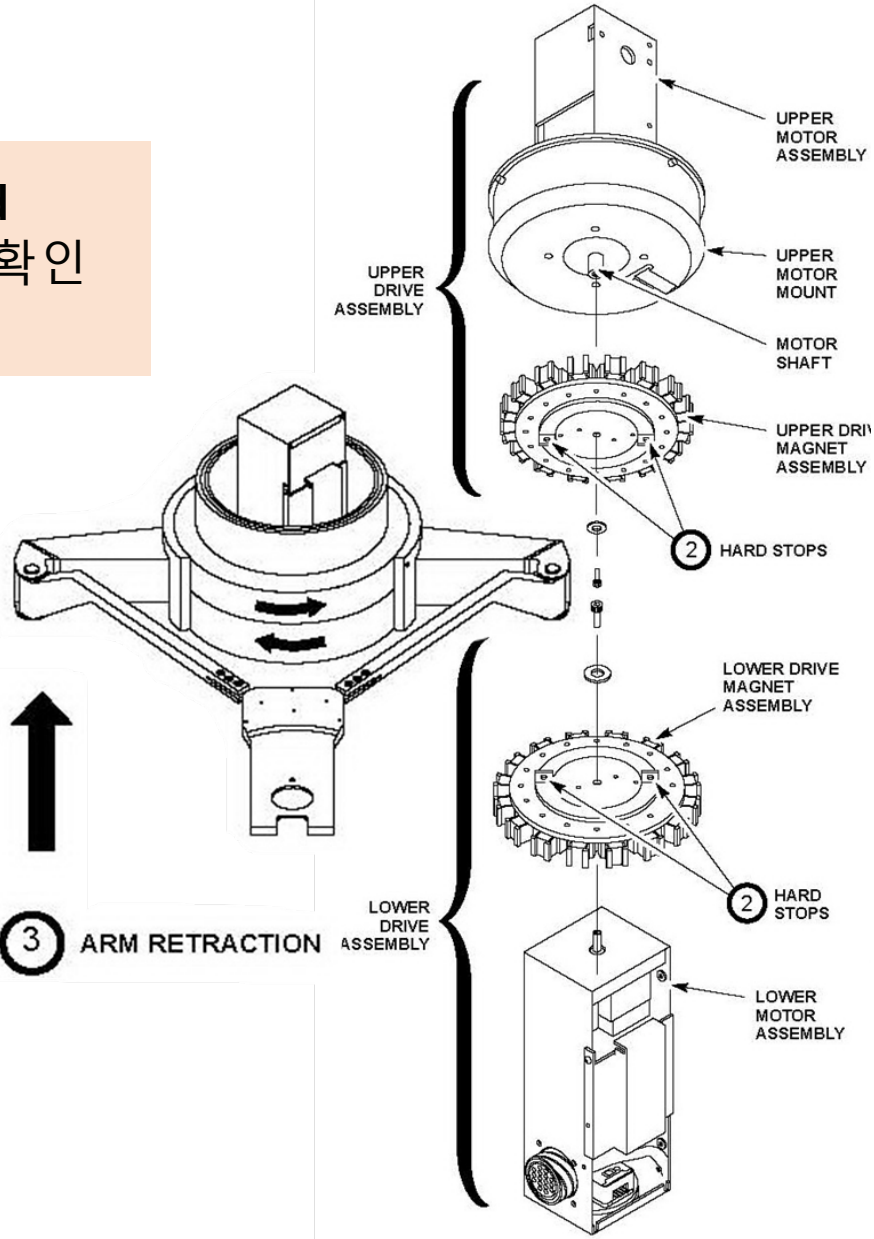
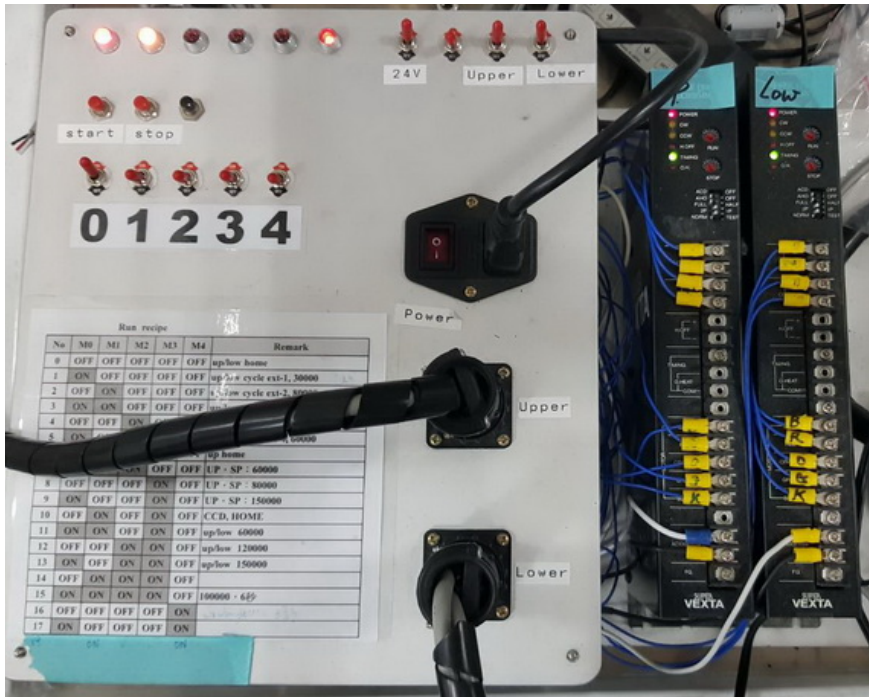
AMAT XP Robot overhaul



XP Robot Service :
1.Overhaul
2.Exchange

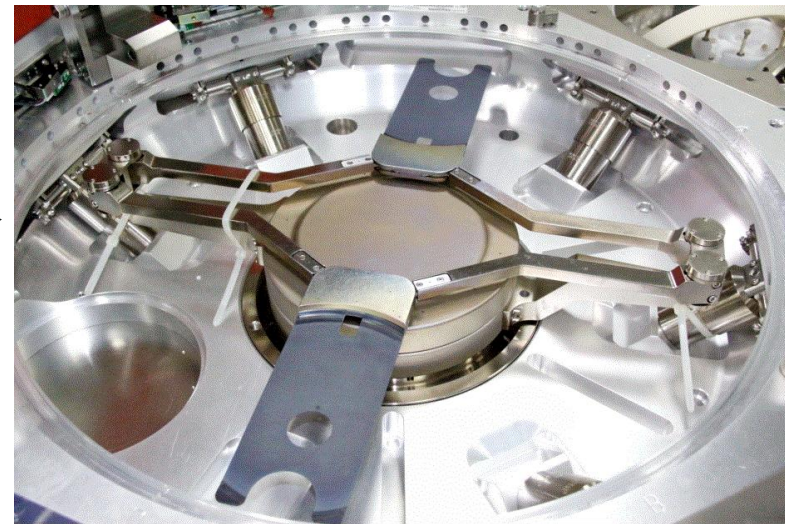
HP Robot Test Platform

Test Platform 이용하여 Applied Material 설비 robot 가동 상황을 확인 가능



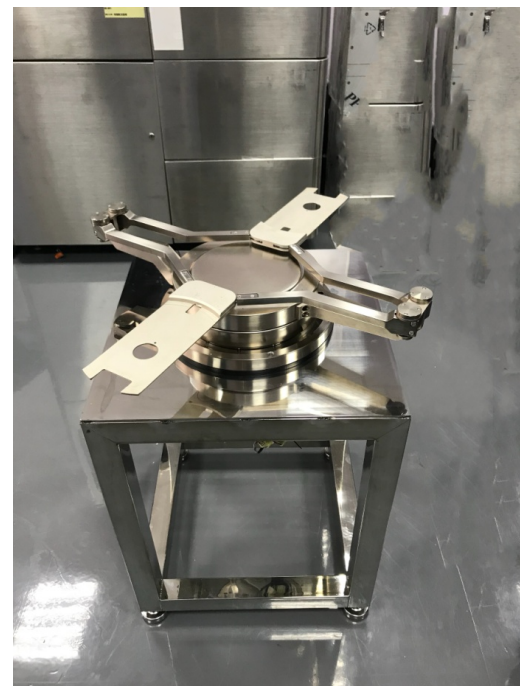
VHP Robot service

VHP Robot Overhaul
Presentation

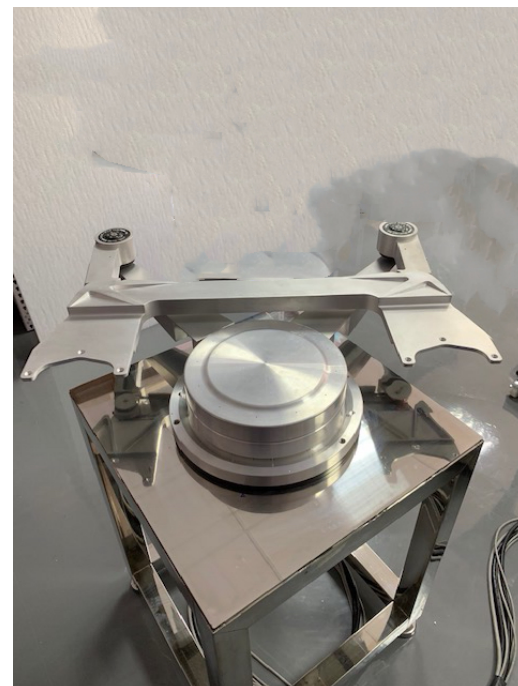


VHP Robot for 200mm &
300mm Tool

VHP Robot Armset



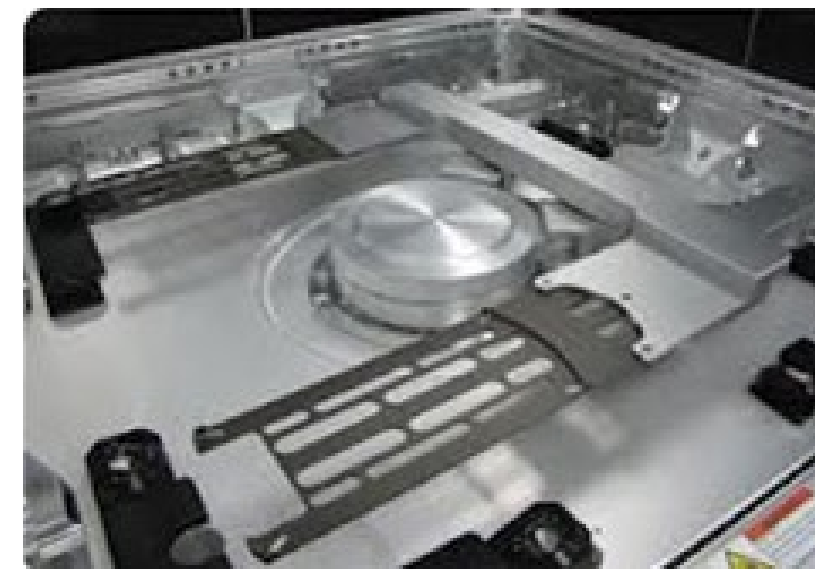
8" Centura type



Producer type



12" ETCH type



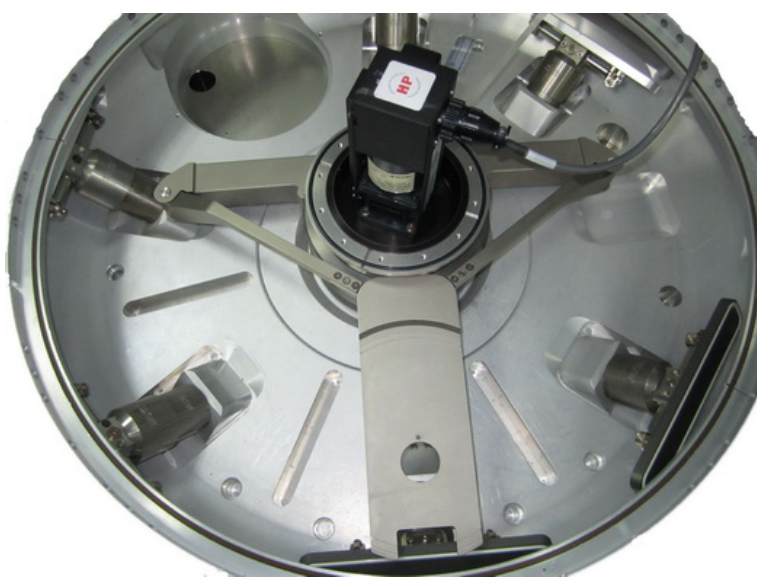
200mm tool ~
ETCH AMAT DPS
CVD AMAT HDP
CVD PRODUCER
PVD ENDURA tool
Transfer robot



300mm tool ~
ETCH AMAT EMAX
ETCH AMAT DPS2
CVD PRODUCER

HP Robot service

HP Robot
Introduction



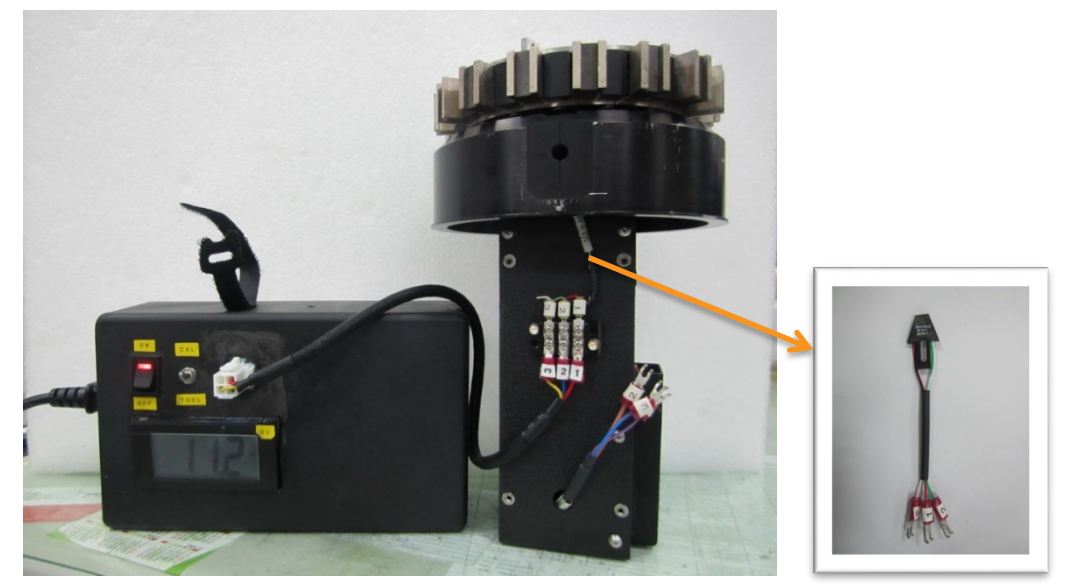
HP Robot Service :
1.Overhaul
2.Exchange

적용 설비



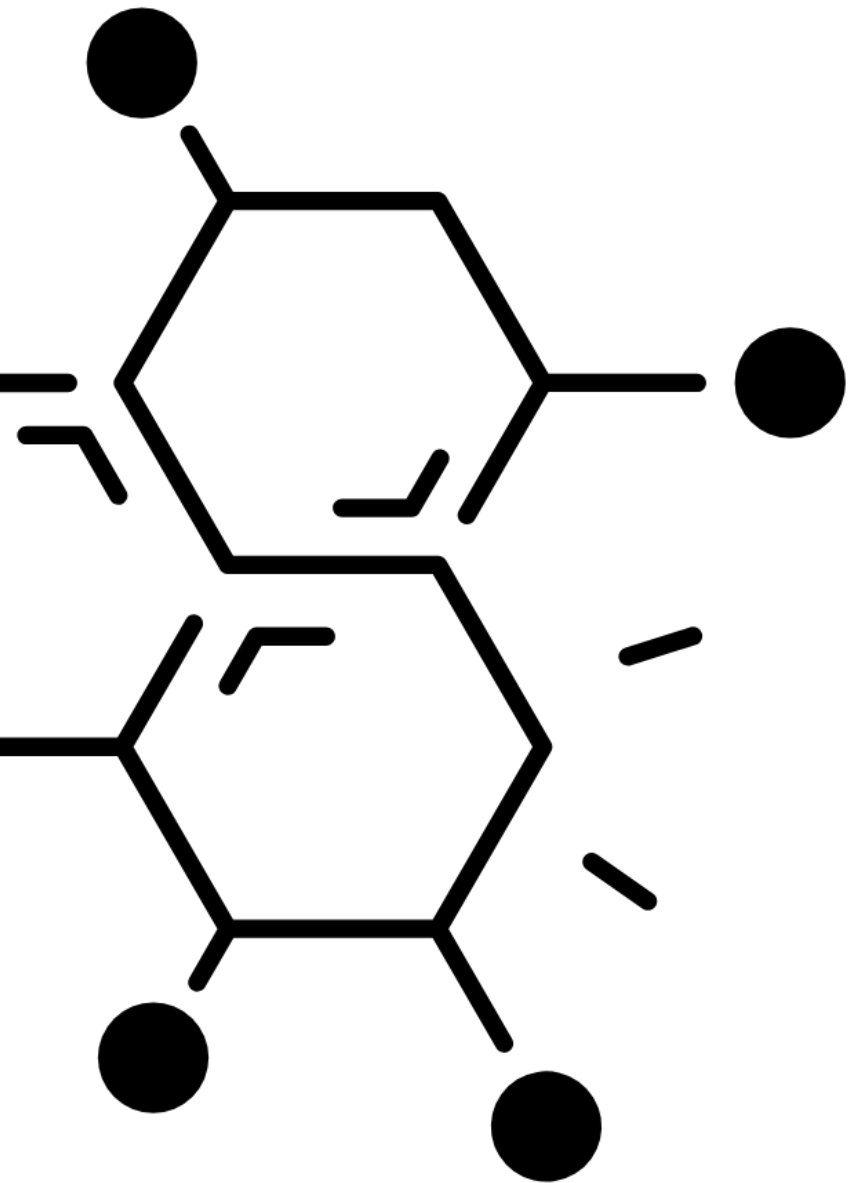
Application : Centura-CVD, Endura- PVD
Etch-Mxp ,Super E ,DPS , HDP
Lead Time : 1~2 weeks
Warranty : 6 months

Adjust home sensor
feedback voltage



Measure sensor feedback voltage after
replace new sensor
Spec: < 1 voltage

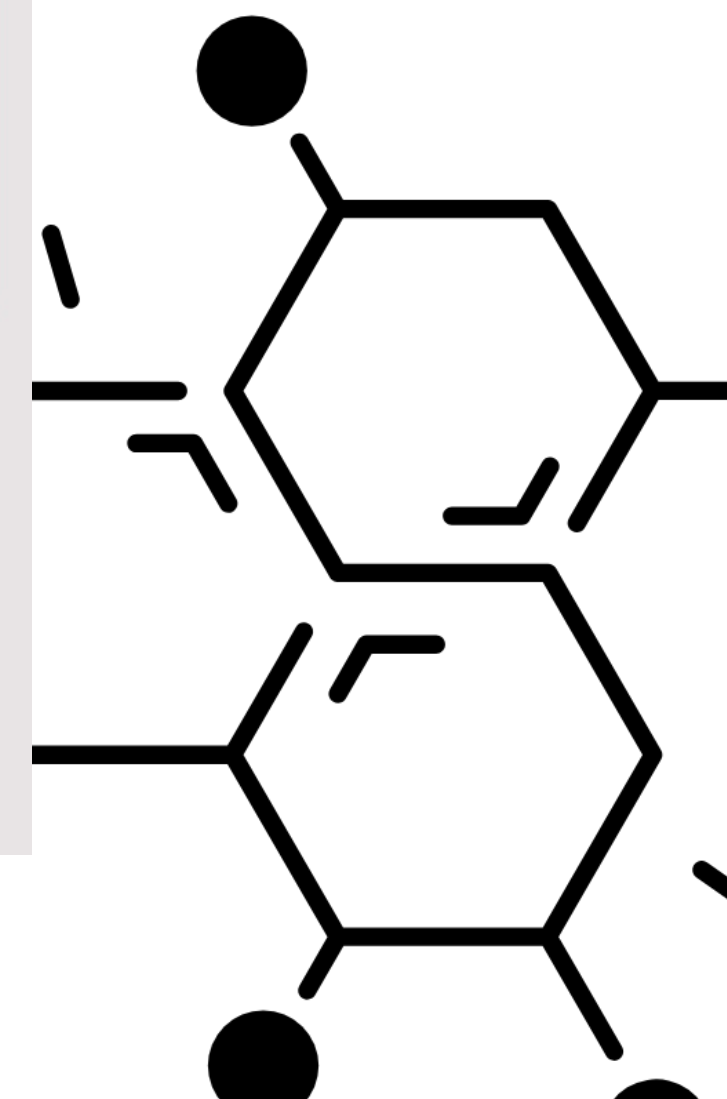
Chemicals



| Group | Product name | Target thickness | Characteristic | |
|---------------|-----------------------|------------------|---|---|
| Semiconductor | KrF Photoresist | YKP-503 | <ul style="list-style-type: none"> Thickness 0.54um (Res. 180nm, 250nm) Implant & Etch Layer | |
| | | YCKP-1654 | <ul style="list-style-type: none"> Thickness 0.54um (Res. 180nm, 250nm) Implant & Etch Layer | |
| | | AYCKP-7930 | <ul style="list-style-type: none"> Thickness 0.30um (Res.180nm) Implant Layer | |
| | | YKN-510 | <ul style="list-style-type: none"> Thickness 0.54um (Res. 180nm, 250nm) Implant & Etch Layer | |
| | | YCKN-4530 | <ul style="list-style-type: none"> Thickness 0.30um (Res.180nm) Implant Layer | |
| | | YCKN-2954 | <ul style="list-style-type: none"> Thickness 0.54um (Res. 180nm, 250nm) Implant & Etch Layer | |
| | TSV Thick Photoresist | YPP-T6K | 6.0um | <ul style="list-style-type: none"> Thickness 6.0um (Res. 6.0um, Contact Hole) i-Line Positive TSV Devices |
| | | AYCKP-9160 | 6.0um | <ul style="list-style-type: none"> Thickness 6.0um (Res. 5.0nm, Contact Hole) KrF Positive TSV Devices |
| | BARC | YCB-240 | 0.024um | <ul style="list-style-type: none"> Thickness 0.024um TSV package BARC – Ball grid array bumping process |
| | | YA-400 | 0.04um | <ul style="list-style-type: none"> Thickness 0.04um ArF BARC |
| | | YA-600A | 0.06um | <ul style="list-style-type: none"> Thickness 0.06um Gapfill BARC |
| YA-800 | | 0.08um | <ul style="list-style-type: none"> Thickness 0.08um ArF BARC | |
| TARC | YCTA-9047 | 0.43um | <ul style="list-style-type: none"> Environmentally safe; PFOS/PFOA issue free Low refractive index pH controllable | |

Chemicals

| Group | Product name | Target thickness | Characteristic | |
|---------------|-------------------------|---|--------------------------------------|--|
| Semiconductor | Spin On Carbon Hardmask | YHS-80 / YHS-140 / YHS-330 / AYCHS-2819 | 0.08um 0.13um 0.33um 0.19um | <ul style="list-style-type: none"> High Tg Low defect density |
| | | YCHS-130 / YCHE-3731 / YCHE-4359 / YCHE-20 | 0.2um 0.31um 0.59um 2.0um | <ul style="list-style-type: none"> High Tg, High etch resistant Low Fume High carbon content (more than 85 wt%) |
| | | YCHS-3814 | 0.08um | <ul style="list-style-type: none"> Planarization SOC |
| | | YS-210 | 0.21um | <ul style="list-style-type: none"> Thickness 0.21um Normal SOC |
| | CMP | NTS-300 | - | <ul style="list-style-type: none"> Slurry for polishing semiconductor SiO₂/Poly/Nitride layer. Alternative of selective/non-selective polishing. |
| | | YCHT-S902 / YCLW-S804 | | |
| | | SW-300 | | <ul style="list-style-type: none"> CMP slurry for Tungsten buffing process W Removal Rate: $\geq 30 \text{ \AA}/\text{min}$ |
| | | YPCC-2000 | - | <ul style="list-style-type: none"> Contamination remove and corrosion control after the CMP process. |



SAFETY GUARANTEE



● Xiamen GCT ISO 9001



● Xiamen GCT ISO 14001



● GCT ISO 9001



● GCT ISO 14001



● SHT ISO 9001



● 위험물 화학 경영 허가

GLORY SUCCESSFUL Group



SUCCESSFUL HEART
TECHNOLOGY

成心科技股份有限公司
SHT



GLORY CLOUDS

光云科技股份有限公司
GCT



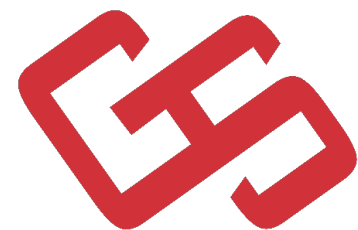
SUCCESSFUL HEART
VACUUM CO., LTD

成心真空股份有限公司
SHV



晶采電子商務股份有限公司
JCI E-commerce

晶采電商股份有限公司
Mother-K



GLORY SUCCESSFUL

- 廈門泛光云電子科技有限公司
- 泛光云科技(江蘇)有限公司

Xiamen GCT



台灣美凱尼斯
股份有限公司
Taiwan Mcsz



深圳市美凱尼斯
科技有限公司
**Shenzhen
Mcsz**



SHENZHEN
SUCCESSFUL HEART

深圳成心电子有限公司
Shenzhen SHT



Thank you.